

# Air Pump

## HYDRAULIC PA6 SERIES

**98 cm<sup>3</sup>/min.**  
Single-Acting

Compact, lightweight and portable. Single-Speed pumps designed to drive single-acting cylinders.

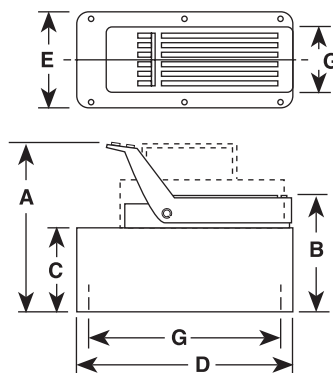
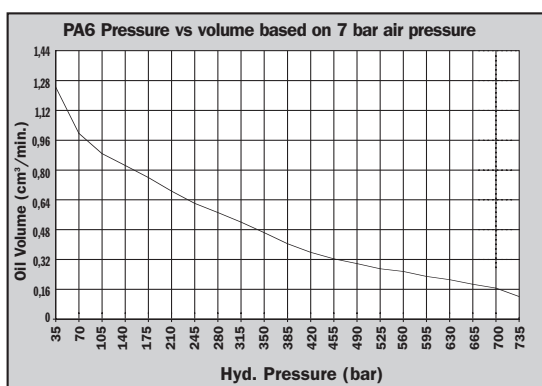
- The power unit of choice for major manufacturers of auto body, frame straighteners and other equipment.
- Operate at 3-8 bar shop air pressure at the pump.
- Internal relief valve protects circuit components, air inlet filter protects motor.
- Serviceable pump motor is not a "throw away", providing economical repair.
- Permanently vented reservoir cap.
- dBA 85 at 700 bar.



PA6

700 bar

PUMPS



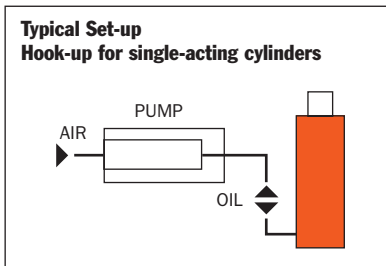
Pump No.	A (mm)	B (mm)	C (mm)	D (mm)	E (mm)	G (mm)
PA6	197	149	111	241	127	102 x 229
PAGA	197	149	111	241	127	102 x 229
PAGAM	197	149	111	241	127	102 x 229
PAGM	197	149	111	241	127	102 x 229
PAGR	197	149	111	241	127	102 x 229
PA6RM	197	149	111	241	127	102 x 229
PA6M-1	200	152	111	321	187	—
PAGAM-2	254	197	171	292	241	203 x 254
PAG-2	260	203	178	292	241	130 x 181



PA6M-1



PA6-2



Description	Order No.	Air Supply Req'd (bar)	Reservoir Cap. (l)	Reservoir Usable (l)	Oil Port (in)	Prod. Wt. (kg)
Base model pump with high density polyethylene reservoir.	<b>PA6</b>	3-8	1,7	1,6	<sup>3</sup> / <sub>8</sub> -NPTF	6,3
PA6 with externally adjustable relief valve.	<b>PA6A</b>	3-8	1,7	1,6	<sup>3</sup> / <sub>8</sub> -NPTF	6,8
PA6A with metal reservoir.	<b>PAGAM</b>	3-8	1,7	1,6	<sup>3</sup> / <sub>8</sub> -NPTF	7,7
PA6, except has metal reservoir.	<b>PA6M</b>	3-8	1,7	1,6	<sup>3</sup> / <sub>8</sub> -NPTF	8,2
PA6 with 3,7m remote control.	<b>PA6R</b>	3-8	1,7	1,6	<sup>3</sup> / <sub>8</sub> -NPTF	9,3
PA6R, except has metal reservoir.	<b>PAGRM</b>	3-8	1,7	1,6	<sup>3</sup> / <sub>8</sub> -NPTF	9,8
PA6, except has 3,8 l metal reservoir.	<b>PA6M-1</b>	3-8	3,8	3,0	<sup>3</sup> / <sub>8</sub> -NPTF	10,7
PA6, except has 7,6 l, high density polyethylene reservoir.	<b>PA6-2</b>	3-8	7,6	7,3	<sup>3</sup> / <sub>8</sub> -NPTF	11,1
PA6, except has 9,5 l metal reservoir.	<b>PA6M-2</b>	3-8	9,5	9,1	<sup>3</sup> / <sub>8</sub> -NPTF	14,5

