

# Center Hole CYLINDERS RH SERIES

## 30-200 Ton Double-Acting

Ideal for pulling and tensioning.

CYLINDERS

- Interchangeable piston head inserts (see page 35) provide versatility of application.
- Built-in safety feature prevents over-pressurization of the retract circuit.
- Plated piston rod resists wear; superior packings provide high cycle life without leakage.
- Corrosion-resistant standpipe has "Power Tech" treatment (see page 8).
- Each cylinder has 9796 <sup>3</sup>/<sub>8</sub>" NPTF female half couplers. The 60 ton thru 200 ton models are equipped with removable carrying handles.

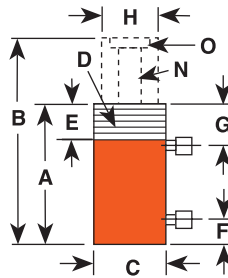


30, 60, 100, 150, 200 Ton  
Double-Acting Models  
Feature Plain Collar

ASME B30.1  
700 bar



30, 60, 100 Ton  
Double-Acting Models Feature  
Threaded Collar



Cyl. Cap. (tons)	Stroke (mm)	Order No.	Oil Cap. (cm <sup>3</sup> )		A Re-tracted Height (mm)	B Ex-tended Height (mm)	C Outside Dia. (mm)	D Collar Thread (in.)	E Collar Length (mm)	F Base to Port (mm)	G Cylinder to Top Port (mm)	H Piston Rod Dia. (mm)	N Center Hole Dia. (mm)	O Insert Thread Size (in.)	Mounting Holes (in.) and Bolt Circle (mm)	Cylinder Effective Area (cm <sup>2</sup> )		Metric Tons at 700 bar		Weight (kg)
			Push	Pull												Push	Pull	Push	Pull	
30	15	RH303	289	167	179,4	255,6	120,7	-	-	25,4	41,3	63,5	32,5	2-12	<sup>3</sup> / <sub>8</sub> -16 x 92,1	38,0	21,8	26,8	15,3	13,5
30	15	RH306D	580	333	281,0	433,4	120,7	-	-	25,4	41,3	63,5	32,5	2-12	<sup>1</sup> / <sub>16</sub> -20 x 92,1	38,0	21,8	26,8	15,3	20,4
30	20	RH3010	1.082	672	438,2	695,3	114,3	4 1/2-12	41	44,5	81,0	60,3	33,3	1 1/2-16	-	42,2	26,1	29,7	18,3	27,7
60	25	RH604D	807	338	241,3	342,9	177,8	-	-	39,7	57,2	101,6	54,0	3-12	<sup>1</sup> / <sub>2</sub> -13 x 130,2	79,4	33,2	55,8	25,1	16,2
60	25	RH605*	1.009	423	241,3	368,3	165,9	-	-	25,4	44,5	101,6	54,0	3-12	<sup>1</sup> / <sub>2</sub> -13 x 130,2	79,4	33,2	55,8	25,1	33,1
60	40	RH6010*	2.181	1.427	458,8	716,0	158,8	6 1/2-12	47,6	54,0	81,8	92,1	54,4	3-16	-	84,8	55,4	59,6	38,9	54,5
100	45	RH1001*	526	233	165,1	203,2	212,7	-	-	31,8	58,7	127,0	79,8	4-16	<sup>5</sup> / <sub>8</sub> -11 x 177,8	138,0	60,8	97,0	42,7	38,6
100	50	RH1006*	1.971	1.076	314,3	466,7	184,2	-	-	37,3	59,1	111,1	52,4	-	<sup>1</sup> / <sub>2</sub> -13 x 139,7	129,2	70,5	90,8	49,6	43,1
100	45	RH10010*	3.552	1.556	495,3	752,5	215,9	8 1/2-12	57	63,5	91,7	139,7	79,8	4 1/2-12	-	138,0	60,8	97,0	42,7	109,0
150	70	RH1505*	2.475	1.207	311,2**	438,2	215,9	-	-	37,3	68,3	139,7	65,1	-	-	194,1	94,8	136,9	66,8	67,2
150	75	RH1508*	3.929	2.086	349,3	552,5	247,7	-	-	39,3	61,1	152,4	80,2	5-12	-	193,2	102,6	135,9	72,1	103,1
200	75	RH2008*	5.307	2.093	408,0	611,2	273,1	-	-	57,2	81,8	190,5	103,2	6-12	1 1/2-12 x 198,1	260,9	102,9	183,5	72,4	142,0

\* Supplied with carrying handles.

\*\* Measured with 19 mm high serrated insert installed.  
See pages 30-35 & 110-123 for hydraulic accessories.

