



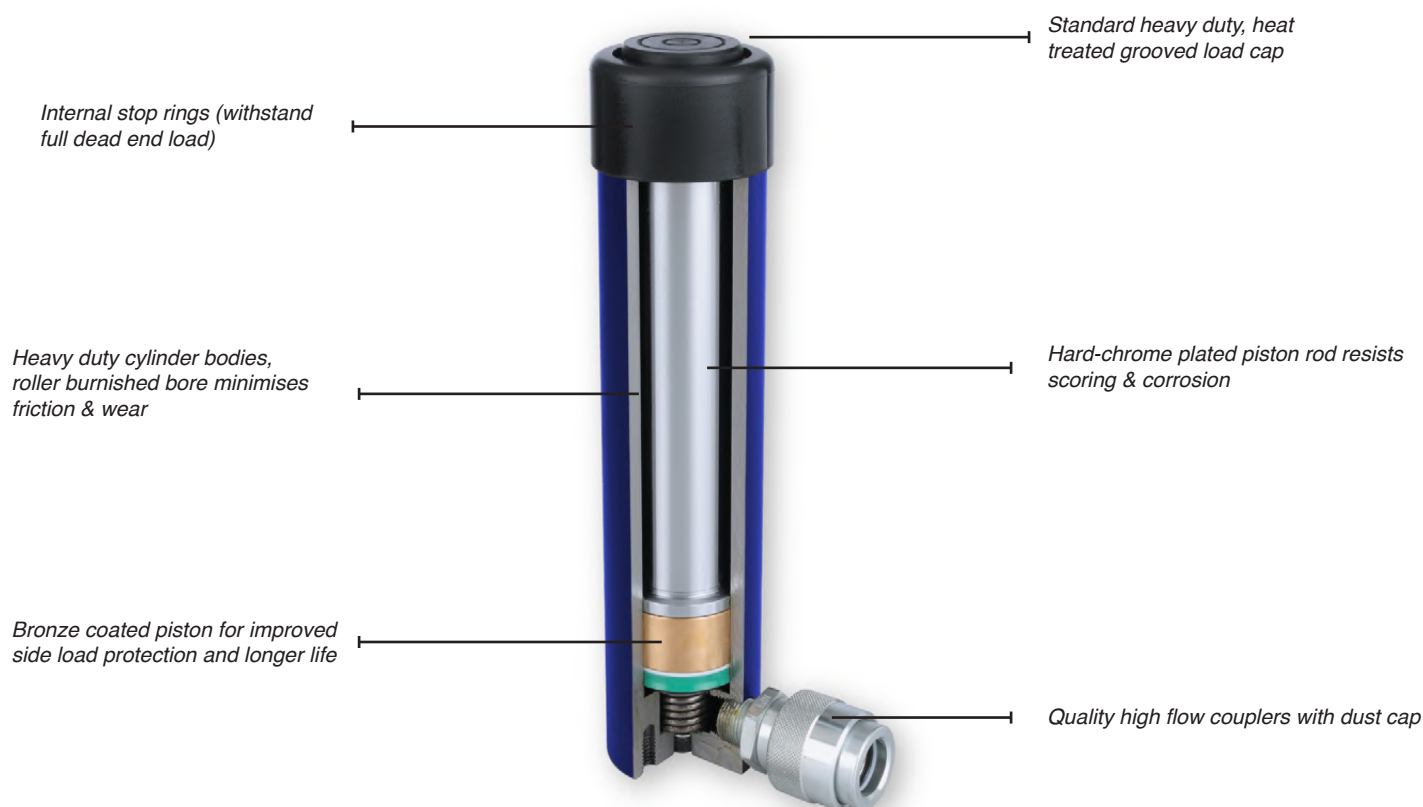
- HYDRAULIC TOOLS & EQUIPMENT -

PUMPS | CYLINDERS | PULLERS | JACKS | TOOLS | ACCESSORIES



BC3-19

SUPERIOR TORQUE AND TENSION SOLUTIONS



FEATURES

- *Wide variety - Boss offers a wide selection of cylinders in various capacities and strokes to match your daily needs.*
- *Built for rugged industrial/construction applications - All Boss cylinders meet worldwide safety standards.*
- *Long operational life - Stop rings, bronze coated pistons and heavy duty construction provide trouble free operation and long life.*
- *Spring return - Heavy duty, wound steel plated springs provide fast and complete retracting cycle after cycle, and retain their tension longer.*
- *Versatile fixturing - Threaded collars and internal piston threads withstand the full load of the cylinder.*
- *Piston "Blow-Out" protection - All Boss cylinders incorporate a positive piston stop ring to limit piston travel at the end of the stroke, and allows the cylinder to be operated at full stroke.*
- *Protection from contamination - Rod wiper cleans the rod surface during retraction which protects the inner cylinder assembly from dirt, moisture and other contaminants.*
- *Rust protection - Boss will have either a nitrided finish and / or fully painted on the standard steel cylinders and an anodised finish the aluminium cylinders.*

SUMMARY OF CYLINDERS

Model	Function	Description	Capacity Ton	Stroke (mm)
C	Single Acting	General purpose, spring return	5-100	25-362
CP	Single Acting	Low profile, spring return	5-150	6-17
CM	Single Acting	Compact, spring return	10-100	38-57
CPL	Single Acting	Lock nut, spring return, pancake	60-520	45-50
CA	Single Acting	Aluminium spring return	20-100	51-254
CAL	Single Acting	Lock nut, spring return, aluminium	20-100	51-254
CHA	Single Acting	Spring return hollow, aluminium	30-60	76-153
CH	Single Acting	Spring return hollow	12-100	8-158
CHD	Double Acting	Hollow	30-100	76-256
CHAD	Double Acting	Hollow, aluminium	30-60	51-254
CD	Double Acting	General purpose	10-1000	150-470
CL	Single Acting	Locking Collar	50-1000	50-300

**Meets or exceeds
ASME B30.1**





Meets or
exceeds
ASME B30.1

MODEL: C-SERIES

- Single Acting - Spring Return
- Capacity : 5 - 100 Ton
- Stroke : 25mm - 362mm
- Maximum working pressure : 10,000 psi / 700 Bar

FEATURES

- Single Acting with spring return
- Hard chrome plated piston rod
- Cylinder bore is roller burnished for extended life
- Cylinder body fully nitrided and painted for rust protection

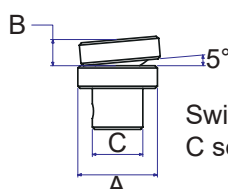
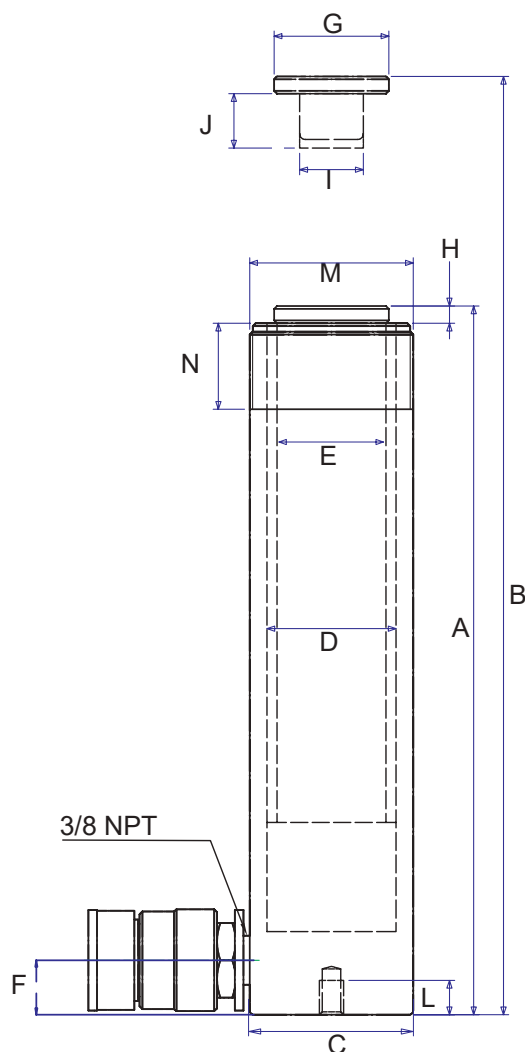
ACCESSORIES

Model	A	B	C
SC10	40	11.5	22.2
SC25	50	14	36.3
SC100	70	28.5	-

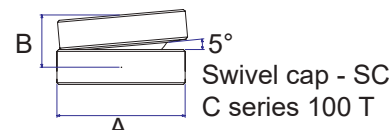
Model	A	B	C	D
BM10	9	123	230	58
BM25	16	128	280	89

Model	A	B	C	D	E	F
PC5	28	41	14	16	16	25
PC10	43	59	25	22.3	25	34
PC15	43	62	25	22.3	25	37
PC25	57	74	38	31.8	31	43

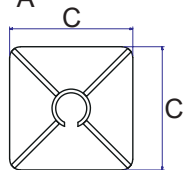
Model	A	B	C	D	E	F
BC5	44	48	14	16	16	25
BC10	63	67	25	22.3	25	35
BC15	76	67	25	22.3	25	35
BC25	95	79	38	31.8	31	41



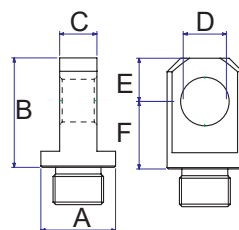
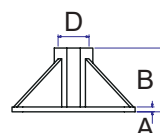
Swivel cap - SC
C series 10-25T



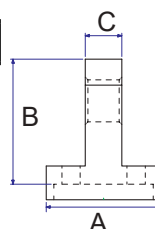
Swivel cap - SC
C series 100 T



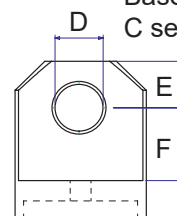
Base mount - BM
C series 10-25T



Piston Clevis - PC
C series 5-25T



Base Clevis - BC
C series 5-25T



SPECIFICATIONS

Model	Cap. Ton	Stroke mm	Oil Cap (cm ³)	A	B	C Ømm	D Ømm	E Ømm	F mm	G mm	H mm	I ØUN	J mm	L mm	M ØUN	N mm	Weight (kgs)
				Retracted Height mm	Extended Height mm												
C51	5	25.4	16.2	110.2	135.6	38.1	28.7	25.4	19	25.4	6	3/4"-16	14.2	14.2	1 1/2"-16	28.7	1
C53	5	76.2	48.8	165.1	241.3	38.1	28.7	25.4	19	25.4	6	3/4"-16	14.2	14.2	1 1/2"-16	28.7	1.5
C55	5	127	81.8	215.9	342.9	38.1	28.7	25.4	19	25.4	6	3/4"-16	14.2	14.2	1 1/2"-16	28.7	1.9
C57	5	177.8	114	273.1	450.9	38.1	28.7	25.4	19	25.4	6	3/4"-16	14.2	14.2	1 1/2"-16	28.7	2.4
C59	5	231.9	148.6	323.94	555.8	38.1	28.7	25.4	19	25.4	6	3/4"-16	14.2	14.2	1 1/2"-16	28.7	2.8
C101	10	25.4	36.7	91.9	117.3	57.2	42.9	38.1	19	38.1	6	1"-8	19	12.7	2 1/4"-14	28.7	1.8
C102	10	54.1	77.8	121.4	175.5	57.2	42.9	38.1	19	38.1	6	1"-8	19	12.7	2 1/4"-14	28.7	2.3
C104	10	104.9	151.2	171.5	276.4	57.2	42.9	38.1	19	38.1	6	1"-8	19	12.7	2 1/4"-14	28.7	3.3
C106	10	155.7	224.5	247.7	403.4	57.2	42.9	38.1	19	38.1	6	1"-8	19	12.7	2 1/4"-14	28.7	4.5
C108	10	203.2	323	298.5	501.7	57.2	42.9	38.1	19	38.1	6	1"-8	19	12.7	2 1/4"-14	28.7	5.5
C1010	10	257.2	371	349.3	606.6	57.2	42.9	38.1	19	38.1	6	1"-8	19	12.7	2 1/4"-14	28.7	6.4
C1012	10	305.1	439.3	403.1	708.2	57.2	42.9	38.1	19	38.1	6	1"-8	19	12.7	2 1/4"-14	28.7	6.8
C1014	10	36.47	514.6	450.1	806.5	57.2	42.9	38.1	19	38.1	6	1"-8	19	12.7	2 1/4"-14	28.7	7.7
C151	15	26.5	63	124	150.5	73	55	40	19	38	10	1"-8	25.4	12.7	2 3/4"-16	30.2	3.3
C152	15	50.8	102.9	149.4	200.2	69.9	50.8	41.4	24.9	39.9	10	1"-8	25.4	12.7	2 3/4"-16	30.2	4.1
C154	15	101.6	206	200.2	301.8	69.9	50.8	41.4	24.9	39.9	10	1"-8	25.4	12.7	2 3/4"-16	30.2	5
C156	15	152.4	308.9	271.5	423.9	69.9	50.8	41.4	24.9	39.9	10	1"-8	25.4	12.7	2 3/4"-16	30.2	6.8
C158	15	203.2	411.8	322.3	525.5	69.9	50.8	41.4	24.9	39.9	10	1"-8	25.4	12.7	2 3/4"-16	30.2	8.2
C1510	15	254	514.9	373.1	627.1	69.9	50.8	41.4	24.9	39.9	10	1"-8	25.4	12.7	2 3/4"-16	30.2	9.5
C1512	15	304.8	617.8	423.9	728.7	69.9	50.8	41.4	24.9	39.9	10	1"-8	25.4	12.7	2 3/4"-16	30.2	10.9
C1514	15	355.6	720.7	474.7	830.3	69.9	50.8	41.4	24.9	39.9	10	1"-8	25.4	12.7	2 3/4"-16	30.2	11.8
C251	25	25.4	86	143.5	168.9	85.1	65	57.2	25.4	50.8	11	1 1/2"-16	25.4	19.1	3 5/16"-12	49.3	5.5
C252	25	50.8	169	165.1	215.9	85.1	65	57.2	25.4	50.8	11	1 1/2"-16	25.4	19.1	3 5/16"-12	49.3	6.4
C254	25	101.6	338	215.9	317.5	85.1	65	57.2	25.4	50.8	11	1 1/2"-16	25.4	19.1	3 5/16"-12	49.3	8.2
C256	25	158.7	528.2	273.1	431.8	85.1	65	57.2	25.4	50.8	11	1 1/2"-16	25.4	19.1	3 5/16"-12	49.3	10
C258	25	209.5	697.3	323.9	533.4	85.1	65	57.2	25.4	50.8	11	1 1/2"-16	25.4	19.1	3 5/16"-12	49.3	12.3
C2510	25	260.3	866.2	374.7	635	85.1	65	57.2	25.4	50.8	11	1 1/2"-16	25.4	19.1	3 5/16"-12	49.3	14.1
C2512	25	311.1	1035	425.5	736.6	85.1	65	57.2	25.4	50.8	11	1 1/2"-16	25.4	19.1	3 5/16"-12	49.3	16.4
C2514	25	361	1204	476.3	838.2	85.1	65	57.2	25.4	50.8	11	1 1/2"-16	25.4	19.1	3 5/16"-12	49.3	17.7
C308	30	210	925	388	597	103	75	60	57	50	11	1 1/2"-16	25.4	-	4"-12	50	18.1
C552	55	50.8	362	176.3	227.1	127	95.3	79.5	35	80	3	-	-	19.1	5"-12	44.5	15
C554	55	101.1	724	227.6	328.7	127	95.3	79.5	35	80	3	-	-	19.1	5"-12	44.5	19.1
C556	55	158.8	1130	282.7	441.5	127	95.3	79.5	35	80	3	-	-	19.1	5"-12	44.5	23.2
C5510	55	254	1816	383.54	638.81	127	95.3	79.5	35	80	3	-	-	19.1	5"-12	44.5	29.5
C5513	55	336.6	2398	460.5	797.1	127	95.3	79.5	35	80	3	-	-	19.1	5"-12	44.5	37.7
C756	75	155	1752	285	440	152	120	95	30	70	3	-	-	-	5 3/4"-12	45	29.5
C7513	75	334	3770	491	825	152	120	95	30	70	3	-	-	-	5 3/4"-12	45	59
C1006	100	167.4	2240	358.1	525.5	174.5	130	104.9	39.9	104.9	3	-	-	25.4	6 7/8"-12	44.5	59.1
C10010	100	260.1	3465	449.6	709.7	174.5	130	104.9	39.9	104.9	3	-	-	25.4	6 7/8"-12	44.5	72.7

BASE HOLE DIMENSIONS



C5-C50 Series

C100 Series

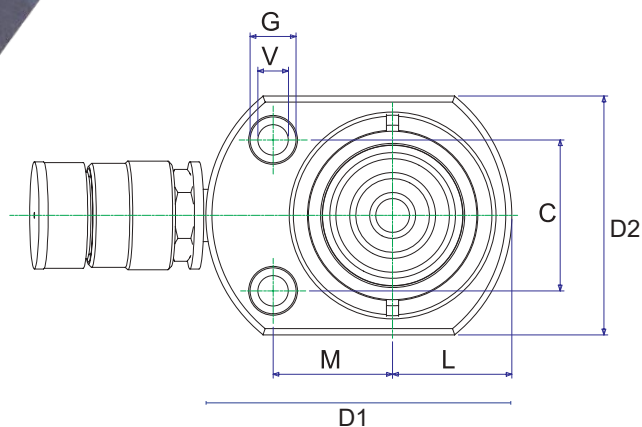
Cyl ton	No Holes	Thread UNC	B.C. Ø mm
5	2	1 1/4"-20	25.4
10	2	5/16"-18	39.6
15	2	3/8"-16	47.8
25	2	1/2"-13	58.4
50	2	1 1/2"-13	95.3
100	4	3/4"-10	139.7

Meets or
exceeds
ASME B30.1



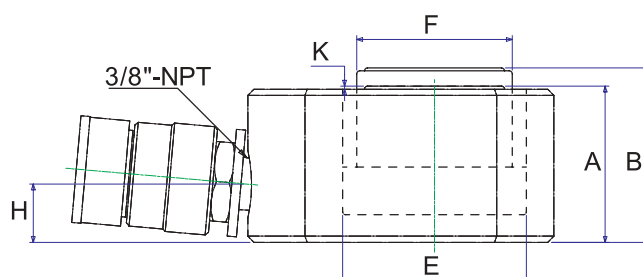
MODEL: CP-SERIES

- Single Acting - Low Profile
- Capacity : 5 - 150 Ton
- Stroke : 6mm - 16mm
- Maximum working pressure : 10,000 psi / 700 Bar



FEATURES

- Single Acting with spring return
- Hard chrome plated piston rod
- Cylinder body fully nitrided and painted for rust protection
- Roller burnished cylinder bore
- Angled coupling for ease of connection

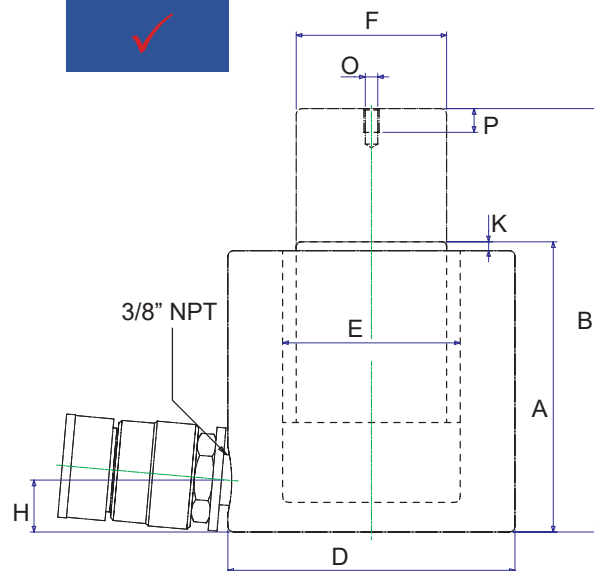


SPECIFICATIONS

Model	Cap. Ton	Stroke (mm)	Oil Cap. (cc)	A Retracted Height (mm)	B Extended Height (mm)	C (mm)	D1 D2 (mm)	Ø E (mm)	Ø F (mm)	Ø G (mm)	M (mm)	H (mm)	K (mm)	L (mm)	Ø V (mm)	Weight (kg)
CP50	5	6	4.5	33	39	28.5	58.5 44	31	25.4	9.5	22	16	1	22	5.3	0.7
CP100	10	12	18	42	54	36.5	82.5 60	44	38	11	34	19	1	30	7.5	1.6
CP200	20	12	34	51	63	49.3	100 78	60	50.8	15	39	19	1	39	10	2.6
CP300	30	13	54	58	71	52.3	117.5 95	73	63.5	16	47.5	19	2	47.5	10	4.5
CP500	50	16	113	66	82	66.5	145 115	95	70	19	58	19	2	57.5	11	6.8
CP750	75	16	180	79	95	76.2	170 145	120	82.5	20.5	70	19	2	72.5	13.5	11.3
CP1000	100	16	229	85	101	76.2	185 160	135	92	20.5	78	19	2	80	13.5	14.5
CP1500	150	17	363	100	117	117	225 195	165	115	20.5	85	23	2	97.5	13.5	26.3



Meets or
exceeds
ASME B30.1

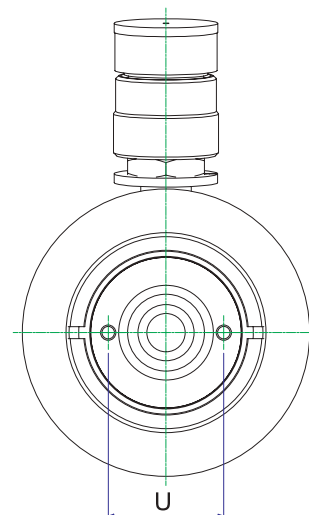


MODEL: CM-SERIES

- Single Acting - Mid Profile
- Capacity : 10 - 100 Ton
- Stroke : 38mm - 62mm
- Maximum working pressure : 10,000 psi / 700 Bar

FEATURES

- Single Acting with spring return
- Hard chrome plated piston rod
- Cylinder body fully nitrided and painted for rust protection
- Roller burnished cylinder bore
- Angled coupling for ease of connection

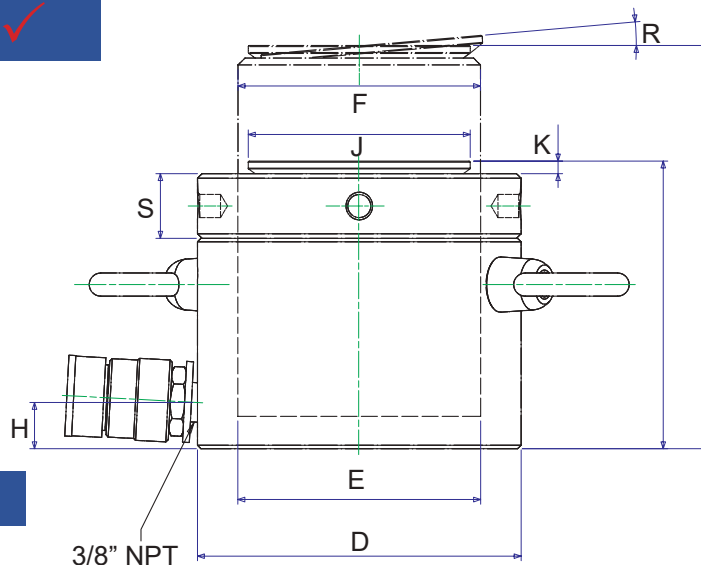


SPECIFICATIONS

Model	Cap. Ton	Stroke (mm)	Oil Cap. (cc)	A Retracted Height (mm)	B Extended Height (mm)	D (mm)	Ø E (mm)	Ø F (mm)	H (mm)	K (mm)	O (mm)	U (mm)	P (mm)	Weight (kg)
CM101	10	38.1	55	88.9	126.2	69.9	42.9	38.1	17.5	5	M4	26.2	8	4.1
CM202	20	44.4	127	98.6	143	92.2	60.5	50.8	17.5	3	M5	23.9	9	5
CM302	30	61.9	260	117.6	179.3	101.6	73.2	63.5	19	3	M5	36	8	6.8
CM502	50	60.5	375	127.5	182.6	124.9	88.9	69.9	19	2	M6	39.6	8	10.9
CM1002	100	63.5	725	141.2	198.4	165.1	127	92.2	25	1.5	M8	55.6	10	22.7



Meets or
exceeds
ASME B30.1

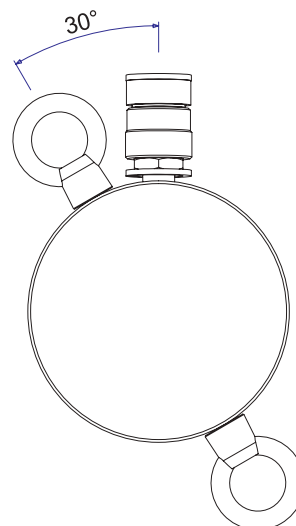


MODEL: CPL-SERIES

- Single Acting - Load Return - Lock Nut
- Capacity : 60 - 500 Ton
- Stroke : 45mm - 50mm
- Maximum working pressure : 10,000 psi / 700 Bar

FEATURES

- Single Acting Cylinder
- Hard chrome plated piston rod
- Overflow port to prevent over extending piston
- Lock nut for safe mechanical load holding
- Low retracted height for use in confined spaces
- Angled coupling for ease of connection

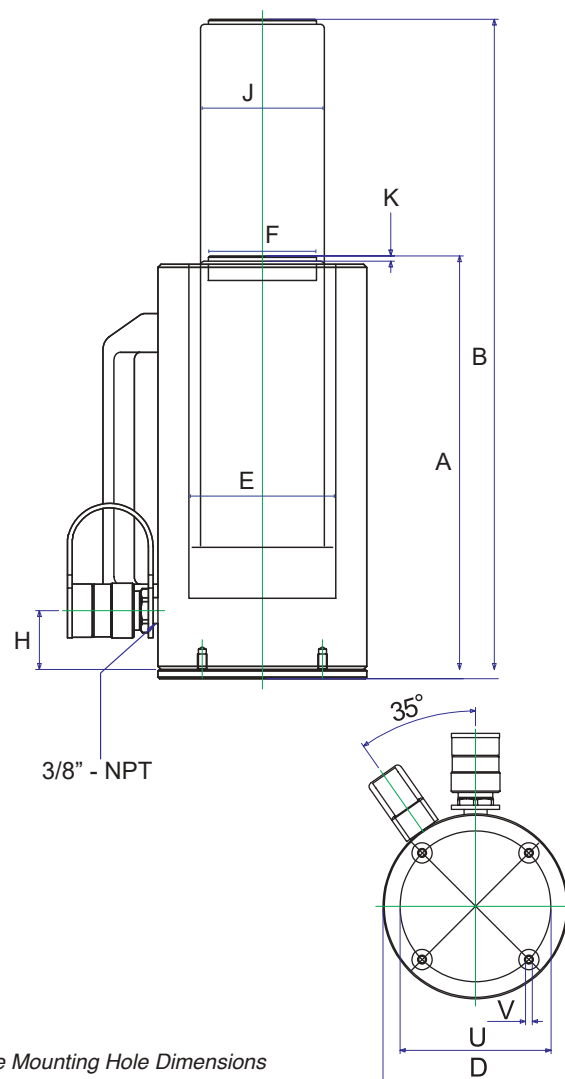


SPECIFICATIONS

Model	Cap. Ton	Stroke (mm)	Oil Cap. (cc)	A Retracted Height (mm)	B Extended Height (mm)	Ø D (mm)	Ø E (mm)	F Lock Nut Thread (mm)	H (mm)	Ø J (mm)	K (mm)	R °	S (mm)	Weight (kg)
CPL602	60	50	433	125	175	140	105	105 x 6	20	96	6	5	28	15
CPL1002	100	50	715	137	187	175	135	135 x 6	21	126	8	5	31	26
CPL1502	150	45	963	148	193	220	165	165 x 6	27	150	9	5	40	44
CPL2002	200	45	1273.5	155	200	245	190	190 x 6	30	180	10	5	43	57
CPL2502	250	45	1633	159	204	275	2515	265 x 6	32	200	11	5	44	74
CPL4002	400	45	2574	178	223	350	270	270 x 6	39	250	11	5	55	134
CPL5002	500	45	3179	192	237	400	300	300 x 6	48	285	10	5	62	189



Meets or
exceeds
ASME B30.1



MODEL: CA-SERIES

- Single Acting - Spring Return
- Capacity : 20 - 100 Ton
- Stroke : 50mm - 250mm
- Maximum working pressure : 10,000 psi / 700 Bar

FEATURES

- Up to half the weight of comparative steel cylinders
- Large bearing surface for side load protection
- Carry handle standard on all models
- Hard anodised coating reduces wear and corrosion
- Heavy duty spring for faster return
- Internal stop ring allows cylinder to withstand full dead end load
- Rod wiper protects cylinder against contamination

SPECIFICATIONS

Base Plate Mounting Hole Dimensions

Model series	U (mm)	V (mm)
CA20	70	M6 x 1.0
CA30	80	M6 x 1.0
CA50	110	M6 x 1.0
CA100	160	M6 x 1.0

Model	Cap. Ton	Stroke (mm)	Oil Cap. (cc)	A (mm)	B (mm)	Ø D (mm)	Ø E (mm)	Ø F (mm)	H (mm)	Ø J (mm)	K (mm)	Weight (kgs)
CA202	20	50	166	168	218	92	62	55	25	40	3	4.3
CA204	20	100	332	218	318	92	62	55	25	40	3	5
CA206	20	150	498	268	418	92	62	55	25	40	3	5.7
CA208	20	200	664	318	518	92	62	55	25	40	3	6.5
CA302	30	50	221	175	225	110	75	60	25	40	3	6
CA304	30	100	442	225	325	110	75	60	25	40	3	6.9
CA306	30	150	663	275	425	110	75	60	25	40	3	7.9
CA308	30	200	884	325	525	110	75	60	25	40	3	8.8
CA502	50	50	354.5	165	215	135	95	80	24	70	3	5.9
CA504	50	100	709	215	315	135	95	80	24	70	3	7.7
CA506	50	150	1063.5	265	415	135	95	80	24	70	3	12.7
CA5010	50	250	1772.5	368	618	135	95	80	24	70	3	16.4
CA1002	100	50	715.5	165	215	198	135	105	25	70	3	18.2
CA1004	100	100	1431	215	315	198	135	105	25	70	3	20.5
CA1006	100	150	2146.5	265	415	198	135	105	25	70	3	22.7
CA10010	100	250	3577.5	368	618	198	135	105	25	70	3	30.9



Meets or
exceeds
ASME B30.1



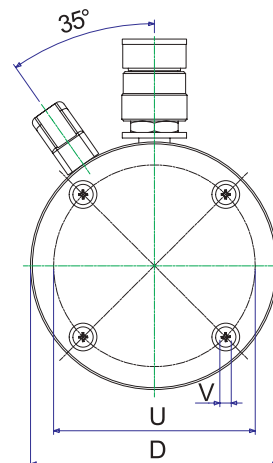
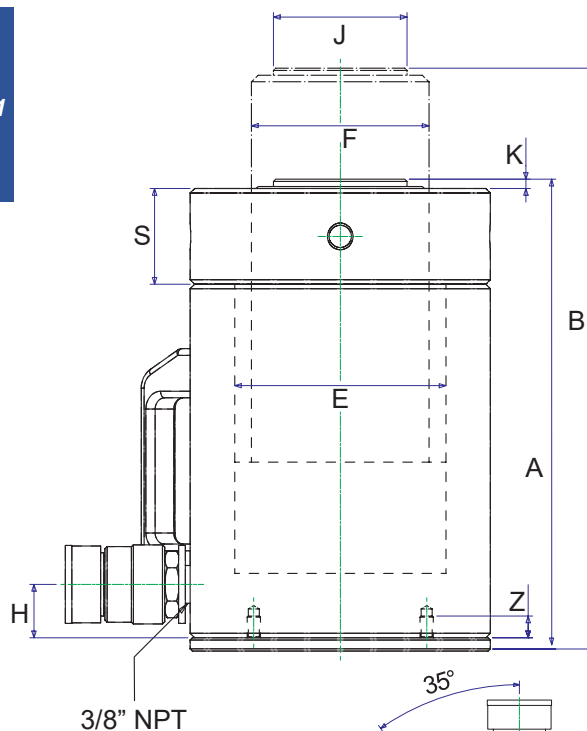
MODEL: CAL-SERIES

- Single Acting - Spring Return - Lock Nut
- Capacity : 20 - 100 Ton
- Stroke : 50mm - 250mm
- Maximum working pressure : 10,000 psi / 700 Bar

FEATURES

- Single Acting Aluminium Cylinder
- Up to half the weight of comparative steel cylinders
- Carry handle standard on all models
- Hard anodised coating reduces wear and corrosion
- Internal stop ring allows cylinder to withstand full dead end load

SPECIFICATIONS



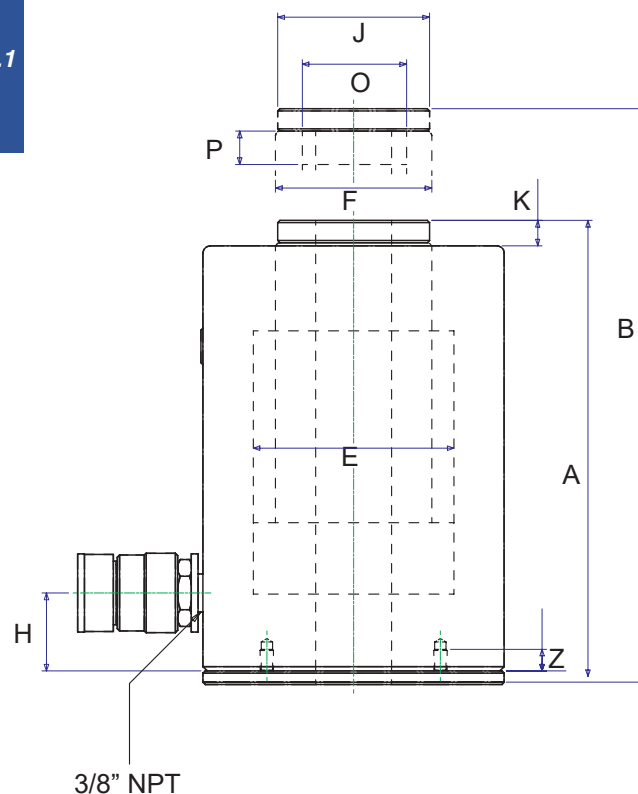
Base Plate Mounting Hole Dimensions

Model series	U (mm)	V (mm)	Z (mm)
CAL20	70	M6 x 1.0	10
CAL30	80	M6 x 1.0	10
CAL50	110	M6 x 1.0	10
CAL100	160	M6 x 1.0	10

Model	Cap. Ton	Stroke (mm)	Oil Cap. (cc)	A Retracted Height (mm)	B Extended Height (mm)	Ø D (mm)	Ø E (mm)	F Lock Nut Thread (mm)	H (mm)	Ø J (mm)	K (mm)	S (mm)	Weight (kg)
CAL202	20	50	151	193	243	92	65	55 x 3	25	40	3	25	4.8
CAL204	20	100	302	243	343	92	65	55 x 3	25	40	3	25	5.7
CAL206	20	150	453	293	443	92	65	55 x 3	25	40	3	25	6.3
CAL208	20	200	604	343	543	92	65	55 x 3	25	40	3	25	6.9
CAL302	30	50	221	205	255	110	75	60 x 3	25	40	3	30	6.9
CAL304	30	100	442	255	355	110	75	60 x 3	25	40	3	30	7.7
CAL306	30	150	662	305	455	110	75	60 x 3	25	40	3	30	8.6
CAL308	30	200	883	355	555	110	75	60 x 3	25	40	3	30	9.6
CAL502	50	50	354	212	262	135	95	80 x 4	30	60	3	43	9.3
CAL504	50	100	708	262	362	135	95	80 x 4	30	60	3	43	10.7
CAL506	50	150	1063	312	462	135	95	80 x 4	30	60	3	43	13.7
CAL508	50	200	1417	362	562	135	95	80 x 4	30	60	3	43	14.5
CAL5010	50	250	1772	412	662	135	95	80 x 4	30	60	3	43	16.5
CAL1002	100	50	715	235	285	200	135	105 x 6	45	70	3	51	21.7
CAL1004	100	100	1431	285	385	200	135	105 x 6	45	70	3	51	25.2
CAL1006	100	150	2146	335	485	200	135	105 x 6	45	70	3	51	29.2
CAL1008	100	200	2861	385	585	200	135	105 x 6	45	70	3	51	33
CAL10010	100	250	3577	438	685	200	135	105 x 6	45	70	3	51	35.4



Meets or
exceeds
ASME B30.1

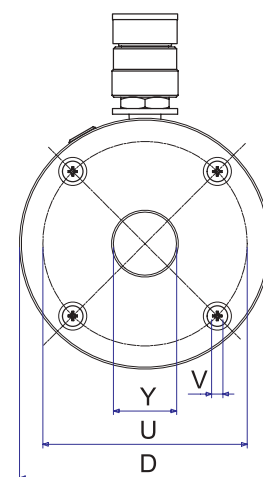


MODEL: CHA-SERIES

- Spring Return - Hollow Centre
- Capacity : 30 - 60 Ton
- Stroke : 50mm - 150mm
- Maximum working pressure : 10,000 psi / 700 Bar

FEATURES

- Up to half the weight of comparative steel cylinders
- Carry handle standard on all models
- Hard anodised coating reduces wear and corrosion
- Heavy duty spring for faster return
- Internal stop ring allows cylinder to withstand full dead end load
- Rod wiper protects cylinder against contamination
- Chrome plated centre hole for extra protection



Base Plate Mounting Hole Dimensions

Model series	U (mm)	V (mm)	Z (mm)
CHA20	80	M6 x 1.0	10
CHA30	110	M6 x 1.0	10
CHA60	160	M6 x 1.0	10

SPECIFICATIONS

Model	Cap. Ton	Stroke (mm)	Oil Cap. (cc)	A Retracted Height (mm)	B Extended Height (mm)	Ø D (mm)	Ø E (mm)	Ø F (mm)	H (mm)	Ø J (mm)	K (mm)	Ø O (UN)	P (mm)	Y Centre Hole Ø (mm)	Weight (kg)
CHA202	20	50	170	175	225	110	75	55	30	54	8	1 1/8" - 16	25	27	4.3
CHA204	20	100	340	245	345	110	75	55	30	54	8	1 1/8" - 16	25	27	7.5
CHA206	20	150	510	315	465	110	75	55	30	54	8	1 1/8" - 16	25	27	8.0
CHA302	30	50	275	202	252	138	95	70	35	68	11.5	1 1/8" - 16	25	34	8.4
CHA306	30	150	825	327	477	138	95	70	35	68	11.5	1 1/8" - 16	25	34	12.8
CHA602	60	50	447.5	250	300	200	125	100	50	89	14	2 3/4" - 16	25	34	23.0
CHA604	60	100	895	300	400	200	125	100	50	89	14	2 3/4" - 16	25	34	26.3
CHA606	60	150	1342	350	500	200	125	100	50	89	14	2 3/4" - 16	25	34	27.0



Meets or
exceeds
ASME B30.1



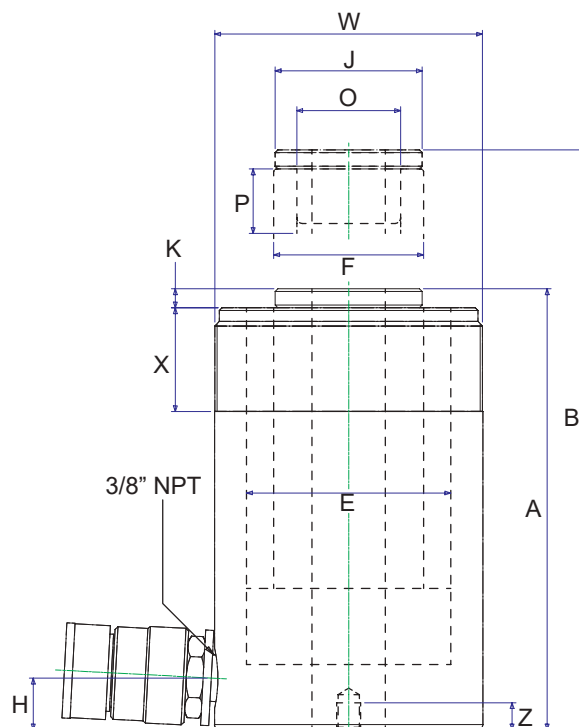
MODEL: CH-SERIES

- Single Acting - Hollow Centre
- Capacity : 12 - 100 Ton
- Stroke : 8mm - 160mm
- Maximum working pressure : 10,000 psi / 700 Bar

FEATURES

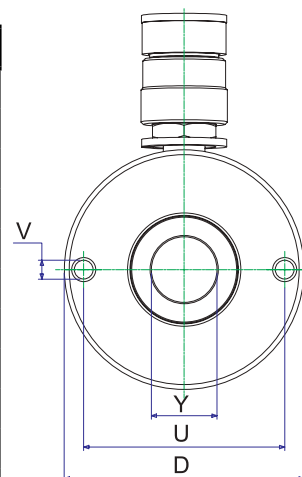
- Single Acting with spring return
- Hard chrome plated piston rod
- Cylinder body fully nitrided and painted for rust protection
- Roller burnished cylinder bore
- Angled coupling for ease of connection

SPECIFICATIONS



Base Plate Mounting Hole Dimensions

Model	U (mm)	Ø V (UN)
CH120	50.8	$\frac{5}{16}$ " - 18
CH121	50.8	$\frac{5}{16}$ " - 18
CH1211	50.8	$\frac{5}{16}$ " - 18
CH123	50.8	$\frac{5}{16}$ " - 18
CH202	82.6	$\frac{3}{8}$ " - 16
CH206	82.6	$\frac{3}{8}$ " - 16
CH302	92	$\frac{3}{8}$ " - 16
CH306	92	$\frac{3}{8}$ " - 16
CH603	130	$\frac{1}{2}$ " - 13
CH606	130	$\frac{1}{2}$ " - 13
CH1003	178	$\frac{5}{8}$ " - 11

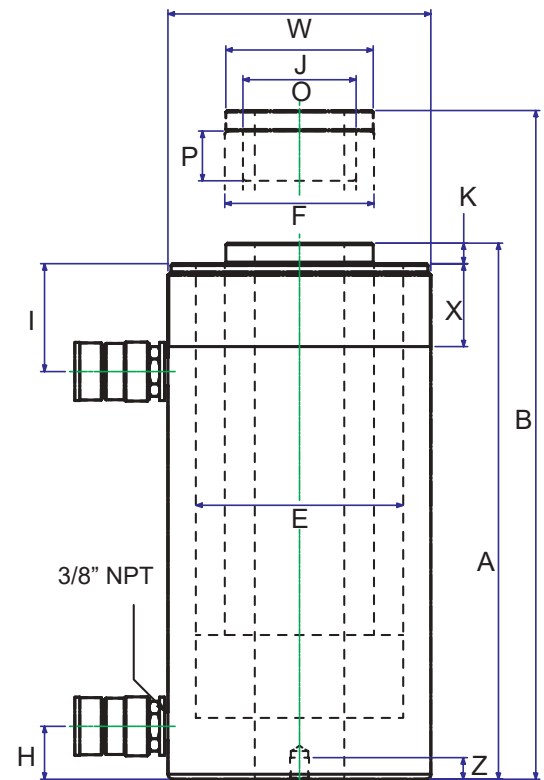


Model	Cap. Ton	Stroke (mm)	Oil Cap. (cc)	A Retracted Height (mm)	B Extended Height (mm)	Ø D (mm)	Ø E (mm)	Ø F (mm)	H (mm)	Ø J (mm)	K (mm)	Ø O (UN)	P (mm)	Z (mm)	Ø W (UN)	X (mm)	Y Centre Hole Ø (mm)	Weight (kg)
CH102	10	63.5	91	135.5	199	76.2	60	52	25.4	53	0.5	1 $\frac{3}{4}$ " - 12	15	10	-	-	19.5	4
CH120	12	8	14.8	60	68	73	54.1	35	12.5	-	-	$\frac{3}{4}$ " - 16	16	9	2 $\frac{3}{4}$ " - 16	33	19.5	1.5
CH121	12	42	79	120	162	73	55	35	19	-	-	-	-	12.7	2 $\frac{3}{4}$ " - 16	33	19.5	3
CH1211 *	12	42	79	120	162	73	55	35	19	-	-	$\frac{3}{4}$ " - 16	16	12.7	2 $\frac{3}{4}$ " - 16	33	19.5	3
CH123	12	76	143.2	184	260	73	55	35	19	-	-	-	-	12.7	2 $\frac{3}{4}$ " - 16	33	19.5	4.2
CH202	20	51	173	162	213	98.5	75	55	19	54	7	$\frac{9}{16}$ " - 16	25	9.4	3 $\frac{7}{8}$ " - 12	38	27	7.5
CH206	20	155	527	306	461	98.5	75	55	19	54	7	$\frac{9}{16}$ " - 16	25	9.4	3 $\frac{7}{8}$ " - 12	38	27	13.5
CH302	30	65	310	178.5	243.5	117	90	65	21.5	59.9	0.5	1 $\frac{1}{2}$ " - 16	25	14	4 $\frac{1}{2}$ " - 12	42	34	11
CH306	30	160	763	330	490	117	90	65	21.5	59.9	0.5	1 $\frac{1}{2}$ " - 16	25	14	4 $\frac{1}{2}$ " - 12	42	34	20.4
CH603	60	76	680	247.5	323.5	158.6	125	90	32	89	12.5	2 $\frac{3}{4}$ " - 16	25	14	6 $\frac{1}{4}$ " - 12	50	54	26.4
CH606	60	152	1360	323.5	475.5	158.6	125	90	32	89	12.5	2 $\frac{3}{4}$ " - 16	25	14	6 $\frac{1}{4}$ " - 12	50	54	34
CH1003	100	76	1085	254	330	213	165	125	38	125	12	4" - 16	30	19	8 $\frac{3}{8}$ " - 12	60	79	50.1

* Threaded Collar



Meets or
exceeds
ASME B30.1



MODEL: CHD-SERIES

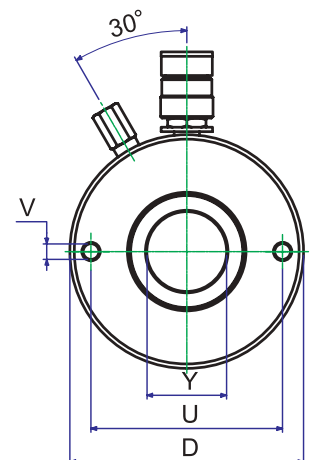
- Double Acting - Hollow Centre
- Capacity : 30 - 100 Ton
- Stroke : 76mm - 257mm
- Maximum working pressure : 10,000 psi / 700 Bar

FEATURES

- Double Acting Cylinder
- Hard chrome plated piston rod
- Cylinder body fully nitrided and painted for rust protection
- Roller burnished cylinder bore
- Retract relief valve installed to protect against pressure intensification

Base Plate Mounting Hole Dimensions

Model	U (mm)	Ø V (UNC)
CHD307	92	3/8" - 16
CHD3010	92	3/8" - 16
CHD603	130	1/2" - 13
CHD606	130	1/2" - 13
CHD6010	130	1/2" - 13
CHD1003	178	5/8" - 11
CHD1006	178	5/8" - 11
CHD10010	178	5/8" - 11

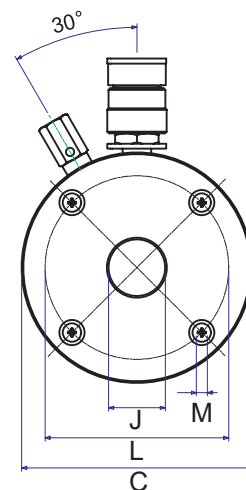
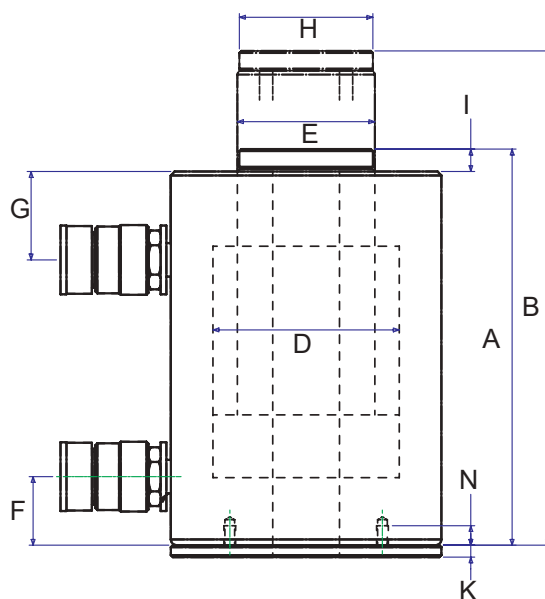


SPECIFICATIONS

Model	Cap. Ton Push / Pull	Stroke (mm)	Oil Cap. (cc) Push / Pull	A Retract Height (mm)	B Extend Height (mm)	Ø D (mm)	Ø E (mm)	Ø F (mm)	H (mm)	I (mm)	Ø J (mm)	K (mm)	Ø O (UN)	P (mm)	Z (mm)	Ø W (UN)	X (mm)	Y Centre Hole Ø (mm)	Weight (kg)
CHD307	30 / 21	178	849 / 541	330	508	117	90	65	21.5	60.5	59.5	0.5	1 1/8" - 16	25	14	4 1/2" - 12	42	34	22
CHD3010	30 / 21	257	1226 / 782	431	688	117	90	65	21.5	60.5	59.5	10	1 1/8" - 16	25	14	4 1/2" - 12	42	34	27
CHD603	60 / 41	89	797 / 526	247.5	336.5	158.6	125	90	32	65	89	12.5	2 3/4" - 16	25	14	6 1/4" - 12	50	54	28
CHD606	60 / 41	165	1477 / 975	232.5	488.5	158.6	125	90	32	65	89	12.5	2 3/4" - 16	25	14	6 1/4" - 12	50	54	35
CHD6010	60 / 41	257	2300 / 1518	437.5	694.5	158.6	125	90	32	65	89	12.5	2 3/4" - 16	25	14	6 1/4" - 12	50	54	45
CHD1003	100 / 64	76	1086 / 692	254	330	213	165	125	38	82	125	12	4" - 16	30	19	8 3/8" - 12	60	79	52
CHD1006	100 / 64	152	2172 / 1384	325	477	213	165	125	38	82	125	12	4" - 16	30	19	8 3/8" - 12	60	79	65
CHD10010	100 / 64	256	3656 / 2331	462	718	213	165	125	38	82	125	12	4" - 16	30	19	8 3/8" - 12	60	79	88



Meets or
exceeds
ASME B30.1



MODEL: CHAD-SERIES

- Double Acting
- Capacity : 10 - 100 Ton
- Stroke : 250mm - 470mm
- Maximum working pressure : 10,000 psi / 700 Bar

FEATURES

- Perfect for construction, ship yards, utilities, mining and equipment maintenance
- Hard anodised coating reduces wear and corrosion
- Rod wiper protects cylinder against contamination
- Cylinder bore is roller burnished
- Retract relief valve installed to prevent over pressurisation

Base Plate Mounting Hole Dimensions

Model series	L (mm)	M (mm)	N (mm)
CHAD30	110	M6 x 1.0	10
CHAD60	160	M6 x 1.0	10

SPECIFICATIONS

Model	Cap. Ton Push / Pull	Stroke (mm)	Oil Cap. (cc) Push / Pull	A Retracted Height (mm)	B Extended Height (mm)	Ø C (mm)	Ø D (mm)	Ø E (mm)	F (mm)	G (mm)	Ø H (mm)	I (mm)	J Centre Hole Ø (mm)	K (mm)	Weight (kg)
CHAD302	38.5/22.7	50	275/162	202	252	138	95	70	35	45	68	11.5	34	6	9.6
CHAD306	38.5/22.7	150	825/486	327	477	138	95	70	35	45	68	11.5	34	6	14.8
CHAD3010	38.5/22.7	250	1374/810	430	680	138	95	70	35	45	68	11.5	34	6	16
CHAD602	62.6/31	50	448/221	250	300	200	125	100	50	50	89	14	54	6	15.5
CHAD606	62.6/31	150	1342/662	350	500	200	125	100	50	50	89	14	54	6	23
CHAD6010	62.6/31	250	2237/1104	433	683	200	125	100	50	50	89	14	54	6	30.5



Meets or
exceeds
ASME B30.1



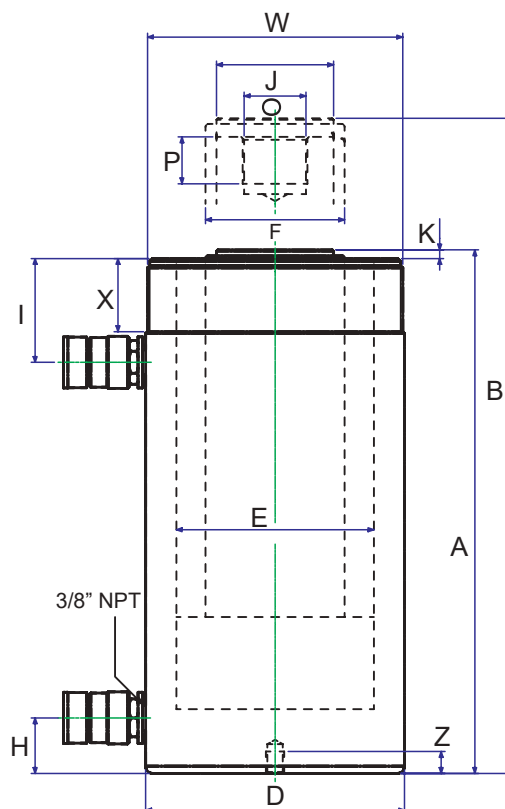
MODEL: CD-SERIES

- Double Acting
- Capacity : 10 - 100 Ton
- Stroke : 250mm - 470mm
- Maximum working pressure : 10,000 psi / 700 Bar

FEATURES

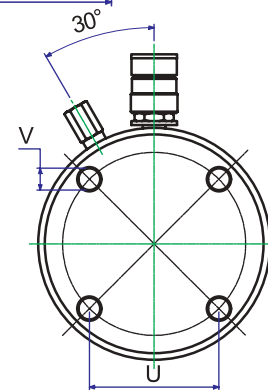
- Perfect for construction, ship yards, utilities, mining and equipment maintenance
- Rod wiper protects cylinder against contamination
- Cylinder bore is roller burnished
- Cylinder body fully nitrided and painted for rust protection
- Retract relief valve installed to prevent over pressurisation

SPECIFICATIONS



Base Plate Mounting Hole Dimensions

Model	U (mm)	Ø V (UNC)
CD1010E	-	-
CD1012E	-	-
CD308E	-	-
CD3014E	-	-
CD506E	88.9	5/8" - 11
CD5013E	88.9	5/8" - 11
CD5018E	88.9	5/8" - 11
CD756E	114.3	3/4" - 10
CD7513E	114.3	3/4" - 10
CD1006E	139.7	3/4" - 10
CD10013E	139.74	3/4" - 10



Model	Cap. Ton Push / Pull	Stroke (mm)	Oil Cap. (cc) Push / Pull	A Retract Height (mm)	B Extend Height (mm)	Ø D (mm)	Ø E (mm)	Ø F (mm)	H (mm)	I (mm)	Ø J (mm)	K (mm)	Ø O (UN)	P (mm)	Z (mm)	Ø W (UN)	X (mm)	Weight (kg)
CD1010E	10 / 4	251	399 / 144	408	659	78	45	36	36.5	55	40	8	1" - 8	25.4	-	2 1/4" - 14	27	13
CD1012E	10 / 4	301	478 / 172	458	759	78	45	36	36.5	55	40	8	1" - 8	25.4	-	2 1/4" - 14	27	15
CD308E	30 / 14	209	923 / 426	387	596	103	75	55	25	75	50	12	1 1/2" - 16	25.4	-	4" - 12	50	20
CD3014E	30 / 14	358	1625 / 751	547	915	103	75	55	25	75	50	12	1 1/2" - 16	25.4	-	4" - 12	50	29
CD506E	50 / 14	150	1062 / 309	331	481	127	95	80	30	70	70	5	1" - 12	25.4	22	5" - 12	50	29
CD5013E	50 / 14	330	2338 / 680	511	841	127	95	80	30	70	70	5	1" - 12	25.4	22	5" - 12	50	43
CD5018E	50 / 14	470	3330 / 968	675	1145	127	95	80	52	70	70	5	1" - 12	25.4	22	5" - 12	50	59
CD756E	75 / 29.5	155	1752 / 654	348	503	152	120	95	30	75	70	5	1" - 12	38	22	5 3/4" - 12	45	40
CD7513E	75 / 29.5	333	3764 / 1405	526	859	152	120	95	30	75	70	5	1" - 12	38	22	5 3/4" - 12	45	58
CD1006E	100 / 43	160	2289 / 1155	358	518	177	130	95	38	71	80	5	1 3/4" - 12	35	25	6 7/8" - 12	50	59
CD10013E	100 / 43	330	4721 / 2383	528	858	177	130	95	38	71	80	5	1 3/4" - 12	35	25	6 7/8" - 12	50	83



Meets or
exceeds
ASME B30.1



MODEL: CL-SERIES

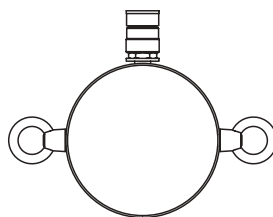
- Single acting
- Capacity : 50 - 1000 Ton
- Stroke : 50mm - 300mm
- Maximum working pressure : 10,000 psi / 700 Bar

FEATURES

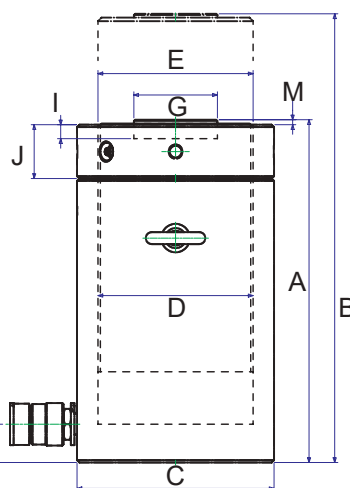
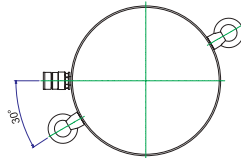
- Perfect for construction, ship yards, utilities, mining and equipment maintenance
- Optional tilt saddle available for side load protection
- Safety lock nut for mechanical load holding
- Overflow port built in for piston protection

SPECIFICATIONS

CL50-200 SERIES

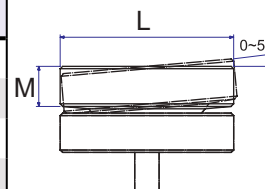


CL300-1000 SERIES



OPTIONAL TILT SADDLES

Model	Cap. Ton	ØL (mm)	M (mm)
TSA-100	50-100	70	22
TSA-200	150-200	125	20
TSA-300	300	195	75
TSA-400	400	225	85
TSA-500	500	250	90
TSA-600	600	275	95
TSA-800	800	320	120
TSA-1000	1000	360	135



Model	Cap. Ton	Stroke (mm)	Oil Cap. (cc)	A Retracted Height (mm)	B Extended Height (mm)	Ø C (mm)	Ø D (mm)	Ø E (mm)	F (mm)	Ø G (mm)	H (mm)	Ø I (mm)	J (mm)	K (mm)	Weight (kg)
CL502	50	50	355	164	214	125	95	95x4	20	70	4	13	25	35	15
CL506	50	150	1064	264	414	125	95	95x4	20	70	4	13	25	35	25
CL5010	50	250	1773	364	614	125	95	95x4	20	70	4	13	25	35	35
CL1002	100	50	665	187	237	165	130	130x4	35	70	4	13	25	45	30
CL1006	100	150	1995	287	437	165	130	130x4	35	70	4	13	25	45	48
CL10010	100	250	3325	387	637	165	130	130x4	35	70	4	13	25	45	64
CL1502	150	50	1005	209	259	205	160	160x6	49	125	4	25	25	45	53
CL1506	150	150	3015	309	459	205	160	160x6	49	125	4	25	25	45	78
CL2006	200	150	4035	343	493	235	185	185x6	52	125	4	25	25	50	117
CL20012	200	300	8070	493	793	235	185	185x6	52	125	4	25	25	50	170
CL3006	300	150	6503	395	545	305	235	235x6	62	160	5	25	25	60	233
CL30012	300	300	13005	545	845	305	235	235x6	62	160	5	25	25	60	323
CL4002	400	50	2755	335	385	355	265	265x6	76	160	5	25	25	70	250
CL4006	400	150	8265	435	585	355	265	265x6	76	160	5	25	25	70	327
CL40012	400	300	16530	585	885	355	265	265x6	76	160	5	25	25	70	441
CL5006	500	150	10598	475	625	395	300	300x6	81	180	5	25	25	80	466
CL50012	500	300	21195	625	925	395	300	300x6	81	180	5	25	25	80	617
CL8006	800	150	17910	555	705	505	390	390x6	105	225	5	25	25	100	870
CL80012	800	300	35820	705	1005	505	390	390x6	105	225	5	25	25	100	1110
CL10002	1000	50	7257	495	545	555	430	430x6	108	250	5	25	25	110	949
CL10006	1000	150	21772	595	745	555	430	430x6	108	250	5	25	25	110	1141
CL100012	1000	300	43544	745	1045	555	430	430x6	108	250	5	25	25	110	1430

HAND PUMPS
AIR PUMPS
ELECTRIC PUMPS



PH1035



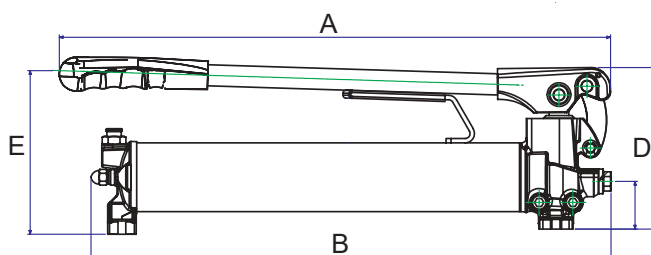
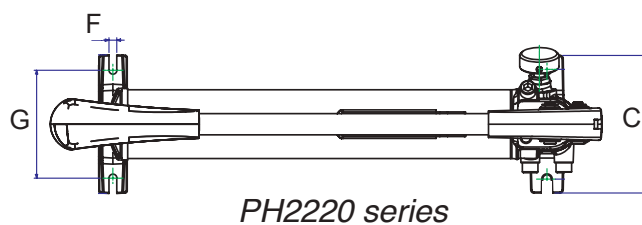
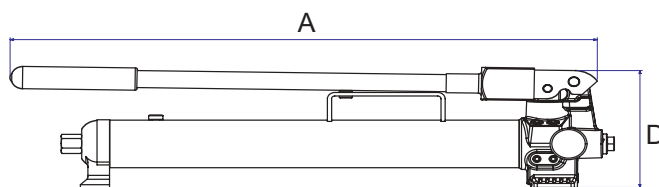
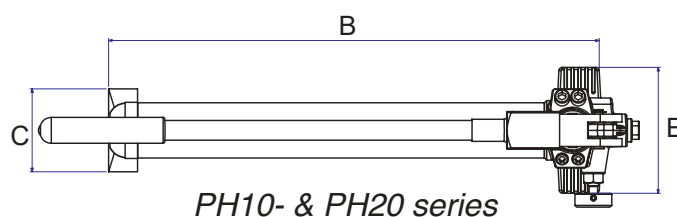
PH2070



PH2220

MODEL: PH-SERIES

- Single & Two Speed Options
- Single and Double Acting models
- Maximum working pressure : 10,000 psi / 700 Bar



FEATURES

- Reduced handle effort
- Vent free reservoir to eliminate oil leakage
- Integrated reservoir over-pressurisation protection
- Chrome plated piston with wiper system for long life
- Internal relief valve set at 10,000 psi (700 bar)
- Larger models come with carry handle
- PHD model suitable for double acting cylinders

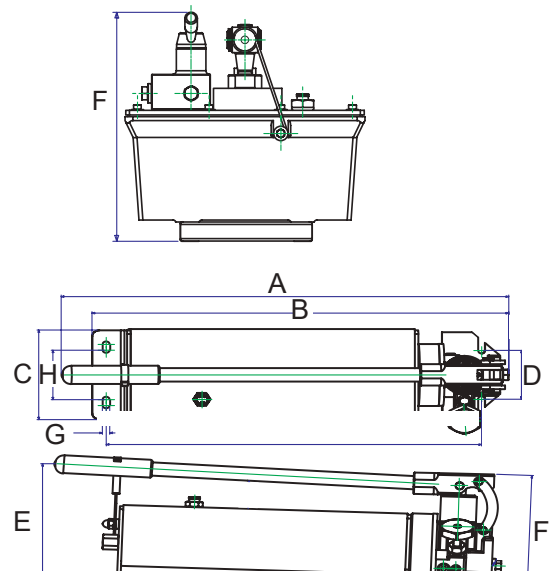
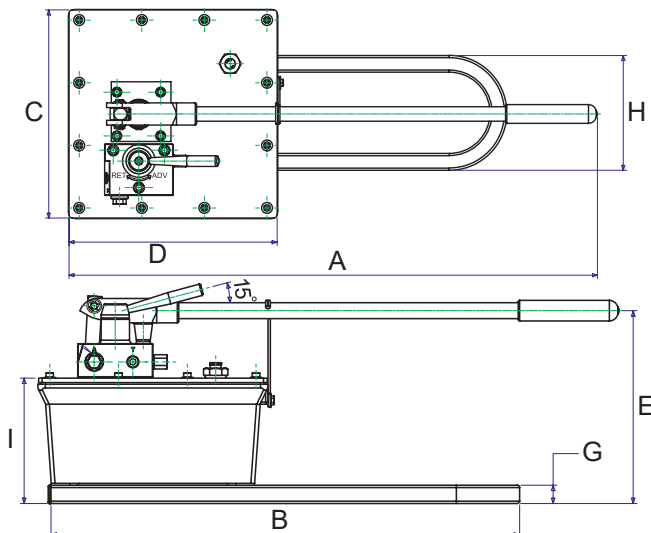
SPECIFICATIONS

Model	Pressure Rating (bar) 1 st Stage / 2 nd Stage	Oil Cap. (cc)	Oil Volume per Stroke (cc) 1 st Stage / 2 nd Stage	A (mm)	B (mm)	C (mm)	D (mm)	E (mm)	F (mm)	G (mm)	Weight (kg)
PH1035	- / 700	350	- / 3.2	343	310	90	146	142	-	-	5
PH1070	- / 700	700	- / 3.2	633	526	90	146	142	-	-	6.5
PH2035	13.8 / 700	350	7 / 1.0	343	310	66	127	142	-	-	5.5
PH2070	13.8 / 700	700	13 / 2.8	633	526	90	146	142	-	-	7.3
PH2220	27.5 / 700	2200	39.5 / 2.8	633	578	150	195	208	8	121	13.5
PHD2220 *	27.5 / 700	2200	35.6 / 2.8	633	609	150	195	208	8	121	15

* Suitable for both Single and Double Acting Cylinders.

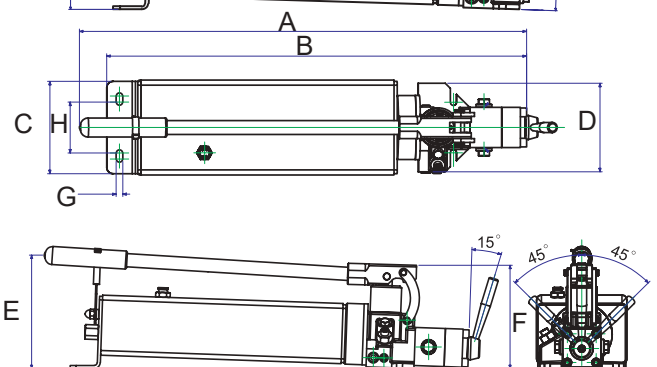


MODEL: PH-SERIES



FEATURES

- Large tanks for use with larger cylinders
- Hi-flow 2 speed pump
- Integrated reservoir over-pressurisation protection
- Chrome plated piston with wiper system for long life
- Single and double acting models available
- Internal relief valve set at 10,000 psi (700 bar)



SPECIFICATIONS

Model	Pressure Rating (bar) 1 st Stage / 2 nd Stage	Oil Cap. (cc)	Oil Volume per Stroke (cc) 1 st Stage / 2 nd Stage	A (mm)	B (mm)	C (mm)	D (mm)	E (mm)	F (mm)	G (mm)	H (mm)	I (mm)	Weight (kg)
PH2350	28 / 700	3500	30 / 3	628	586	146	79.7	190	79.7	10.5	80.5	-	16.5
PHD2350*	28 / 700	3500	30 / 3	715	662	146	79.7	190	79.7	10.5	80.5	-	16.8
PH2700	28 / 700	7000	113 / 4	787	635	310	310	261	298	25	171	170	24
PHD2700*	28 / 700	7000	113 / 4	787	635	310	310	261	298	25	171	170	25

* Suitable for both Single and Double Acting Cylinders.



PHA2200

MODEL: PHA-SERIES

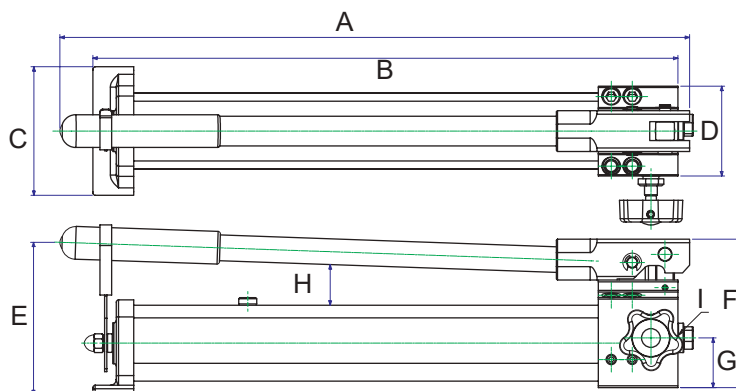
- Single and Double acting models
- Maximum working pressure : 40,000 psi / 2800 Bar



PHA2035

FEATURES

- 2 speed design for maximum efficiency
- PHA models are designed to be used with standard single acting cylinders
- PHAD models are designed to be used with double acting cylinders
- Large release knob on all models
- PHA and PHAD models have internal relief valves all set at 700 bar (10,000 psi) for full circuit protection
- PHAH models have high pressures capabilities up to 2800 bar
- Aluminium reservoirs on all models



SPECIFICATIONS

Model	Pressure Rating (bar) 1 st Stage / 2 nd Stage	Oil Cap. (cc)	Oil Volume per Stroke (cc) 1 st Stage / 2 nd Stage	A (mm)	B (mm)	C (mm)	D (mm)	E (mm)	F (mm)	G (mm)	H (mm)	I (in)	Weight (kg)
PHA2035	13.8 / 700	350	12.9 / 1	391	361	110	77	140	127	42.5	37	3/8 NPT	2.3
PHA2100	13.8 / 700	1000	12.9 / 2.3	542	513	110	77	130	127	42.5	37	3/8 NPT	3.5
PHA2200	13.8 / 700	2000	12.9 / 2.3	623	556	150	102	135	135	50	37	3/8 NPT	6
PHAD2200*	13.8 / 700	2000	12.9 / 2.3	623	556	150	102	135	135	24/37	37	3/8 NPT	7
PHAH1000	13.8 / 1000	1000	12.9 / 1.65	539	501	110	77	145	127	42.5	37	3/8 NPT	3.5
PHAH1500	13.8 / 1500	2000	6.5 / 1	699	629	150	102	152	157	50	37	3/4 -16 UNF	6.7
PHAH2800	14 / 2800	1000	12.9 / 0.5	620	488	80	140	108	157	26	37	3/4 -16 UNF	5.3

* Suitable for both Single and Double Acting Cylinders.

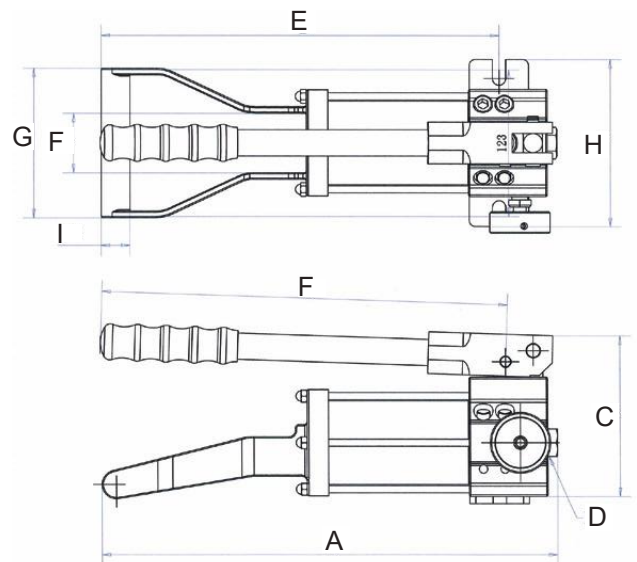


MODEL: PHS SERIES

- Single acting applications only
- Maximum working pressure : 10,000 psi / 700 Bar

FEATURES

- 2 speed design for maximum efficiency
- Designed for single acting applications
- Built in handle for easy operation and carrying
- Bladder reservoir for use in any position
- Internal relief valve at 700 bar (10,000 psi) for full circuit protection
- Light weight aluminium reservoir



SPECIFICATIONS

Model	Pressure Rating (bar) 1 st Stage / 2 nd Stage	Oil Cap. (cc)	Oil Volume per Stroke (cc) 1 st Stage / 2 nd Stage	A (mm)	B (mm)	C (mm)	D (NPT)	E (mm)	F (mm)	G (mm)	H (mm)	I (mm)	Weight (kg)
PHS2035	20/700	350	3.6/ 0.8	382	340	135	3/8	322	50	125	140	24	3.7



PA010



PA019



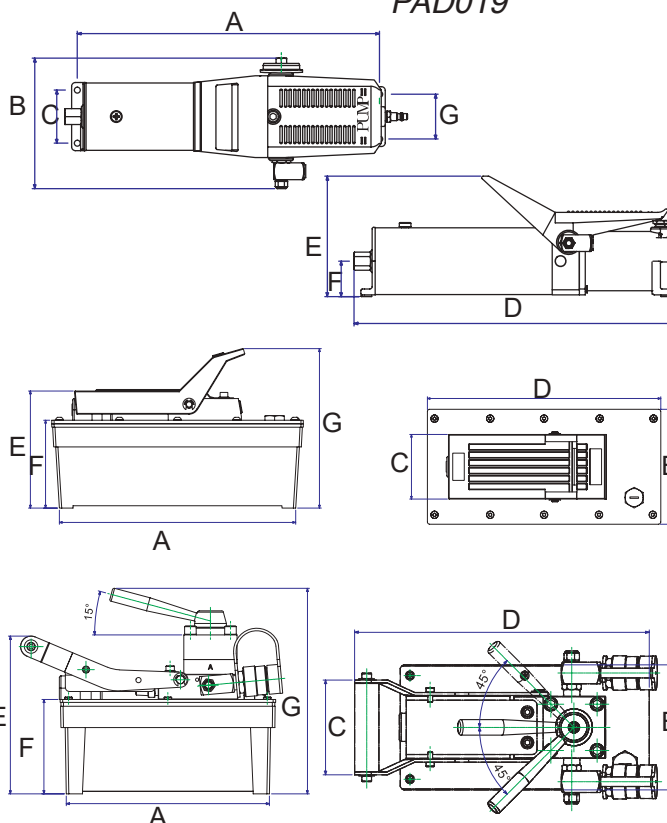
PAD019

MODEL: PA01-SERIES

- Single and Double acting models
- Maximum working pressure : 10,000 psi / 700 Bar

FEATURES

- PA models are designed to be used with standard single acting cylinders
- PAD models are designed to be used with double acting cylinders
- Built in carry handle on PAD models
- Internal relief valves all set at 700 bar (10,000 psi) for full circuit protection
- Aluminium reservoirs on all models



SPECIFICATIONS

Model	Valve type	Function	Control	Oil delivery (cc) 0 bar	Oil delivery (cc) 700 bar
PA010	Single Acting	2 way - Advance/Hold/Retract	Foot	700	100
PA019	Single acting	2 way - Advance/Hold/Retract	Foot	1250	193
PAR019	Single Acting	2 way - Advance/Hold/Retract	Remote	1250	193
PA019-3	Single Acting	2 way - Advance/Hold/Retract	Foot	1250	193
PA019-8	Single Acting	2 way - Advance/Hold/Retract	Foot	1250	193
PAD019	Double Acting	3 position 4 way Double Acting	Foot/Hand	1250	193
PAD019-3	Double Acting	3 position 4 way Double Acting	Foot/Hand	1250	193
PAD019-8	Double Acting	3 position 4 way Double Acting	Foot/Hand	1250	193

Model	Input air pressure (bar)	Air consumption (cfm)	Oil Cap. (cc)	Useable Oil (cc)	A (mm)	B (mm)	C (mm)	D (mm)	E (mm)	F (mm)	G (mm)	Weight (kg)
PA010	7-10	9	850	750	423	170	70	399	160	47	59	5.4
PA019	7-10	9	1600	1300	242	129	90	257	151	113	205	7.3
PAR019	7-10	9	1600	1300	242	129	90	257	151	113	205	8.5
PA019-3	7-10	9	3000	2500	309	160	98	325	151	114	245	9.3
PA019-8	7-10	9	8000	7200	312	312	98	312	184	146	238	14
PAD019*	7-10	9	1600	1300	242	129	98	304	188	113	205	9.1
PAD019-3*	7-10	9	3000	2500	309	160	98	343	189	114	245	12
PAD019-8*	7-10	9	8000	7200	312	312	98	312	221	146	278	17

* Suitable for both Single and Double Acting Cylinders.



MODEL: PA028-SERIES

- Single and Double acting models
- Two speed pump
- Maximum working pressure : 10,000 psi / 700 Bar

FEATURES

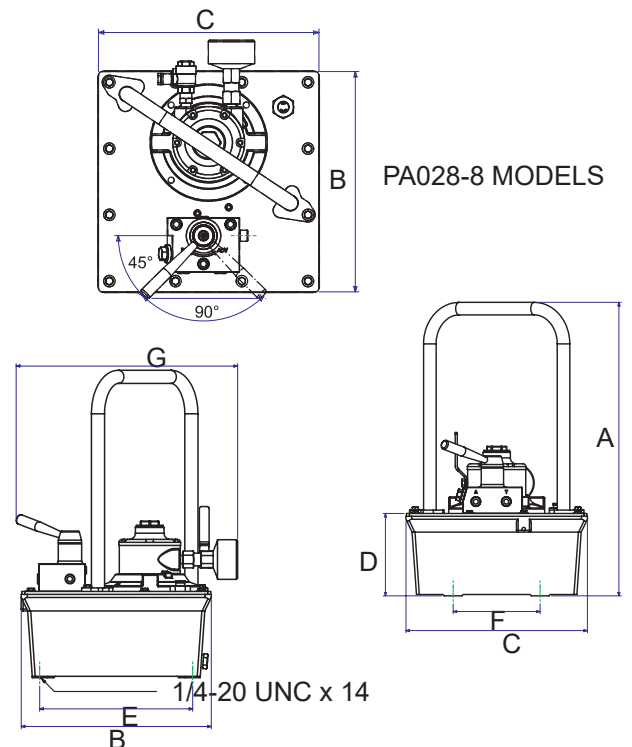
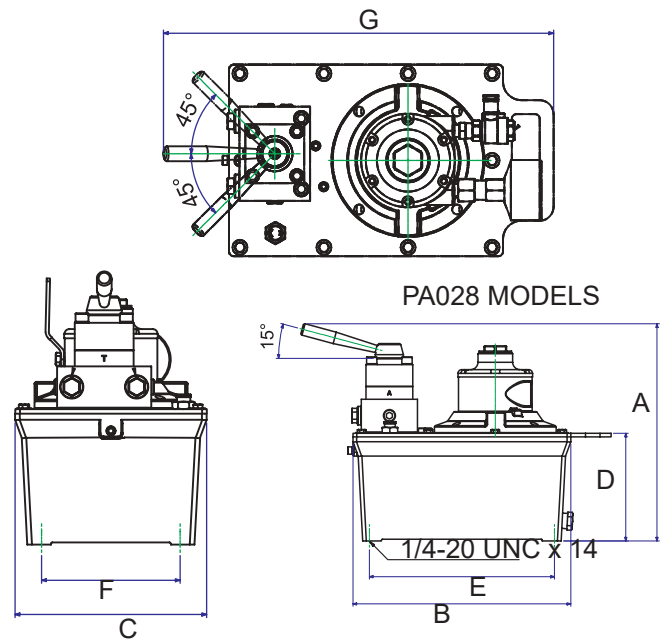
- PA models are designed to be used with standard single acting cylinders
- PAD models are designed to be used with double acting cylinders
- Available in 3 and 8 litre reservoirs
- Internal relief valves all set at 700 bar (10,000 psi) for full circuit protection.
- Aluminium reservoirs on all models

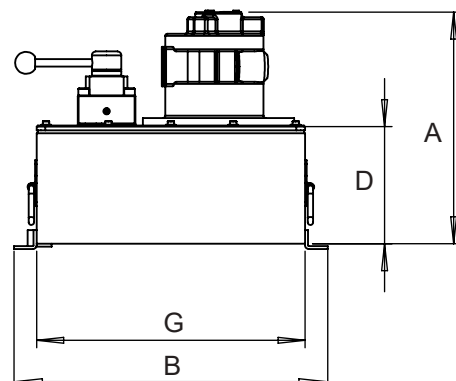
SPECIFICATIONS

Model	Reservoir Cap (c.c)	Reservoir Useable (c.c)	Motor	Oil delivery (cc) 0 bar	Oil delivery (cc) 7 bar	Oil delivery (cc) 350 bar	Oil delivery (cc) 700 bar
PA028 series	3000	2400	2.1kw 1/2 NPT ports	4000	2800	330	280
PA028-8 series	8000	7200	2.1kw 1/2 NPT ports	4000	2800	330	280

Model	Valve function	Valve Control	A (mm)	B (mm)	C (mm)	D (mm)	E (mm)	F (mm)	G (mm)	Weight (kg)
PA028	2 Way 2 Position	Manual	287	295.5	206.5	146.2	251	149.4	350	18.7
PA028-8	2 Way 2 Position	Manual	504	312	312	141.5	251	149.4	363	20
PAD028*	4 Way 3 Position	Manual	295	295.5	206.5	146.2	251	149.4	421	18.7
PAD028-8*	4 Way 3 Position	Manual	504	312	312	141.5	251	149.4	408	20

* Suitable for both Single and Double Acting Cylinders.



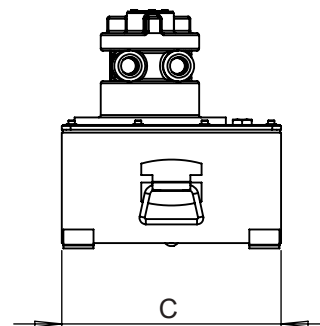
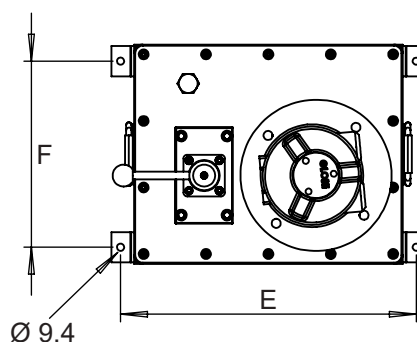


MODEL: PA100-SERIES

- Single and Double acting models
- Two speed pump
- Maximum working pressure : 10,000 psi / 700 Bar

FEATURES

- European vane air motors
- PAD models can be used for both single and double acting applications
- Mounting feet on all models
- Internal relief valves set at 700 bar (10,000 psi) for full circuit protection
- Can be used in underground mining applications



SPECIFICATIONS

Model	Reservoir Cap (c.c)	Reservoir Useable (c.c)	Motor	Oil delivery (cc) 0 bar	Oil delivery (cc) 7 bar	Oil delivery (cc) 350 bar	Oil delivery (cc) 700 bar
PA100 series	11000	9400	3.4kw 3/4" NPT ports	6400	3500	1400	1000

Model	Valve function	Valve Control	A (mm)	B (mm)	C (mm)	D (mm)	E (mm)	F (mm)	G (mm)	Weight (kg)
PA100	3 Way 3 Position	Manual	300.5	414	287	162.6	391.2	246.4	355.6	29.5
PAD100*	4 Way 3 Position	Manual	300.5	414	287	162.6	391.2	246.4	355.6	29.5

* Suitable for both Single and Double Acting Cylinders.



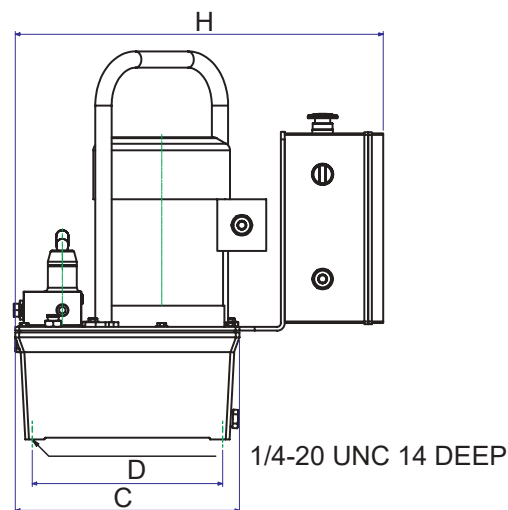
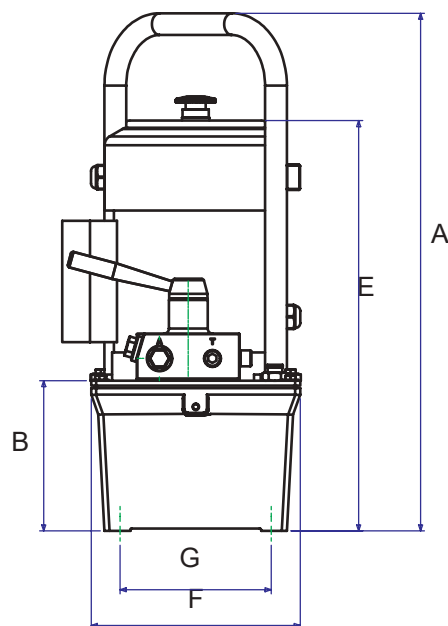
MODEL: PE026-SERIES

- Single and Double acting models
- Two speed pump design
- Maximum working pressure : 10,000 psi / 700 Bar

FEATURES

- 1/2 HP (0.45kw) brushless motor
- 3m pendant supplied with all models
- Thermal protected induction motor
- Starts under full load
- Internal relief valves all set at 700 bar (10,000 psi) for full circuit protection
- Aluminium reservoirs on all models

SPECIFICATIONS



Model	Reservoir Cap (c.c)	Reservoir Useable (c.c)	Motor	Oil delivery (cc) 0 bar	Oil delivery (cc) 7 bar	Oil delivery (cc) 350 bar	Oil delivery (cc) 700 bar
PE026 series	3000	2400	0.45kw 220v 50/50hz	4000	2800	330	280
PE026-8 series	8000	7200	0.45kw 220v 50/50hz	4000	2800	330	280

Model	Valve function	Valve Control	A (mm)	B (mm)	C (mm)	D (mm)	E (mm)	F (mm)	G (mm)	H (mm)	Weight (kg)
PE026	2 Way 2 Position	Manual	511.5	148.5	295.5	251	406	206.5	149.4	485	25.8
PE026-8	2 Way 2 Position	Manual	504	141.5	311.6	251	391.5	311.6	149.4	485	31.7
PES026	2 Way 2 Position	Solenoid	511.5	148.5	295.5	251	406	206.5	149.4	485	29.8
PES026-8	2 Way 2 Position	Solenoid	504	141.5	311.6	251	391.5	311.6	149.4	485	35.7
PED026*	4 Way 3 Position	Manual	511.5	148.5	295.5	251	406	206.5	149.4	485	25.8
PED026-8*	4 Way 3 Position	Manual	504	141.5	311.6	251	391.5	311.6	149.4	485	31.7
PEDS026*	4 Way 3 Position	Solenoid	511.5	148.5	295.5	251	406	206.5	149.4	485	29.8
PEDS026-8*	4 Way 3 Position	Solenoid	504	141.5	311.6	251	391.5	311.6	149.4	485	35.7

* Suitable for both Single and Double Acting Cylinders.



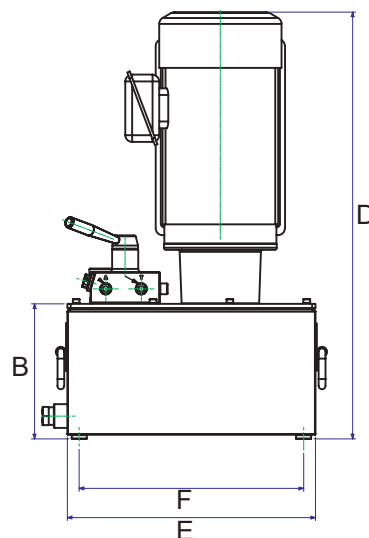
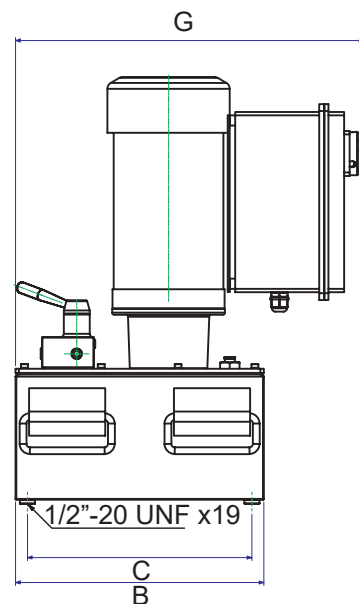
MODEL: PE180-SERIES

- Single and Double acting models
- Two speed pump design
- Maximum working pressure : 10,000 psi / 700 Bar

FEATURES

- 3 HP (2.2kw) brushless motor
- 3m pendant supplied with all models
- Thermal protected induction motor
- Conforms to CE standard
- Internal relief valves all set at 700 bar (10,000 psi) for full circuit protection
- Quiet operation only 80dBA

SPECIFICATIONS



Model	Reservoir Cap (c.c)	Reservoir Useable (c.c)	Motor	Oil delivery (cc) 0 bar	Oil delivery (cc) 7 bar	Oil delivery (cc) 350 bar	Oil delivery (cc) 700 bar
PE180 series	20,000	18,000	2.2kw 380v 50Hz 3 phase	9500	2450	1950	1800

Model	Valve function	Valve Control	A (mm)	B (mm)	C (mm)	D (mm)	E (mm)	F (mm)	G (mm)	Weight (kg)
PE180	2 Way 2 Position	Manual	198.5	365	330	627.5	224.4	180	512	65
PES180	2 Way 2 Position	Solenoid	198.5	365	330	627.6	224.4	180	512	69
PED180*	4 Way 3 Position	Manual	198.5	365	330	627.5	224.4	180	512	65
PEDS180*	4 Way 3 Position	Solenoid	198.5	365	330	627.5	224.4	180	512	69

* Suitable for both Single and Double Acting Cylinders.



FEATURES

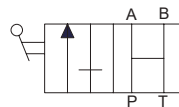
- Split flow pumps provide accuracy within 3% across all outlets.
- Large wired pendant allows easy control of individual outlets or all outlets together
- Lifting points for easy transportation
- Fully adjustable relief valves up to 700 bar (10,000 psi)
- Can be used in underground mining applications
- All units can be fully customised with flows starting from 0.45 lpm per outlet
- Configurations available from 2 outlets up to 8 as standard



MANUAL VALVES

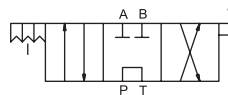
Model: DVBB

- 2 Way 2 position for single acting applications
- Suit pump series PE026 & PE180



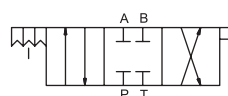
Model: DVE1B

- 4 Way 3 position for single and double acting applications
- Tandem centre
- Suit pump series PED026 & PED180
- For PHD2350 use model **DVE1A**



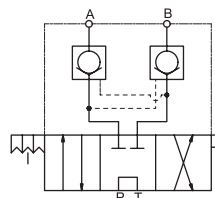
Model: DVE2B

- 4 Way 3 position for single and double acting applications
- Closed centre
- Suit pump series PED026 & PED180



Model: DVF1B

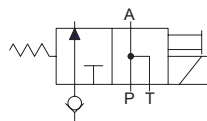
- 4 Way 3 position for single and double acting applications
- Tandem centre
- Built in pilot check valves for load holding
- Suit pump series PED026 & PED180



SOLENOID VALVES

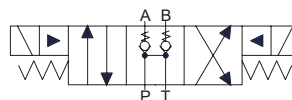
Model: DVGB

- 2 Way 2 position for single acting applications
- Suit pump series PES026 & PES180



Model: DVK1B

- 4 Way 3 position for single and double acting applications
- Tandem centre
- Built in pilot check valves for load holding
- Suit pump series PEDS026 & PEDS180



SPECIFICATIONS

MANUAL VALVES

Model	Valve Function	Weight (kg)
DVBB	2 Way 2 Position	1.7
DVE1B	4 Way 3 Position	2.4
DVE2B	4 Way 3 Position	2.1
DVF1B	4 Way 3 Position	3.3

SOLENOID VALVES

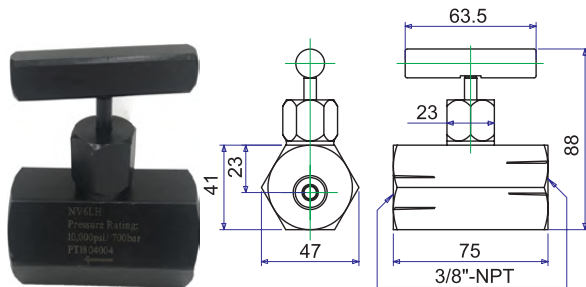
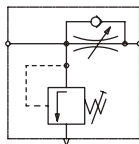
Model	Valve Function	Weight (kg)
DVGB	2 Way 2 Position	4.0
DVK1B	4 Way 3 Position	4.5

VALVES
MANIFOLDS
COUPLINGS
HOSES
ACCESSORIES

LOAD HOLDING VALVES

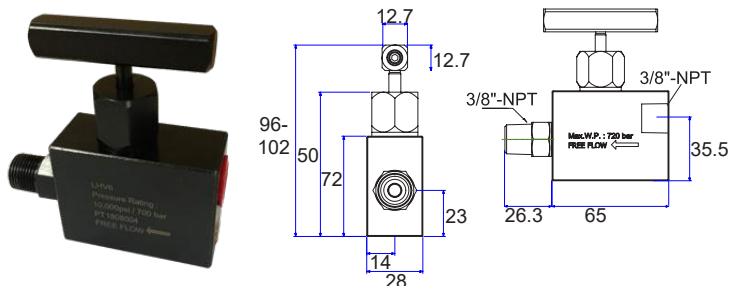
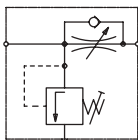
MODEL: NV6LH

- Needle valve style load holding
- Bypass flow control in return direction
- Built in pressure relief valve (vent to atmosphere)
- Maximum working pressure : 10,000 psi / 700 Bar



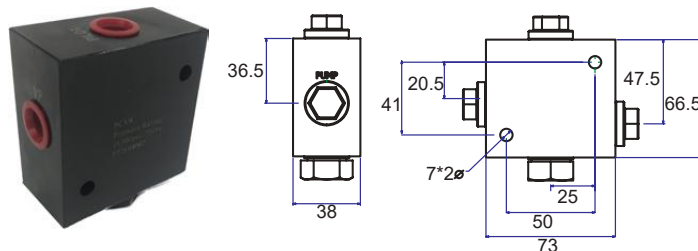
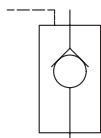
MODEL: LHV6

- Load holding valve
- Bypass flow control in return direction
- Built in pressure relief valve (vent to atmosphere)
- Maximum working pressure : 10,000 psi / 700 Bar



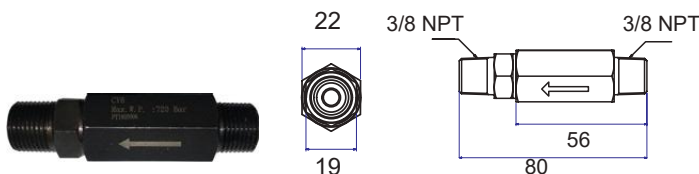
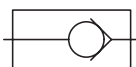
MODEL: PCV6

- Inline pilot operated check valve
- 3/8 NPT female threads
- Maximum working pressure : 10,000 psi / 700 Bar



MODEL: CV6

- Inline check valve
- 3/8 NPT male threads
- Maximum working pressure : 10,000 psi / 700 Bar



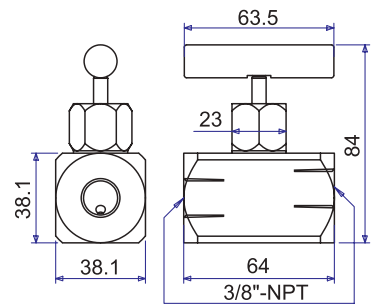
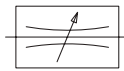
SPECIFICATIONS

Model	Thread	Weight (kg)
NV6LH	$\frac{3}{8}$	1.0
LHV6	$\frac{3}{8}$	0.9
PCV6	$\frac{3}{8}$	1.6
CV6	$\frac{3}{8}$	0.3

SHUT OFF VALVES

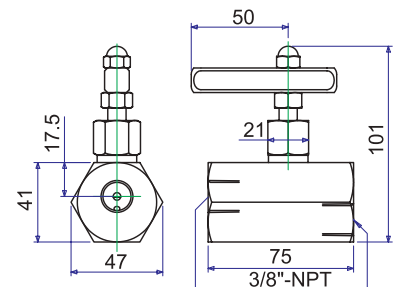
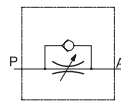
MODEL: NV6

- Used for normal flow control
- Can be used as a shut off valve
- Maximum working pressure : 10,000 psi / 700 Bar
- 1/4 NPT needle valve available on request (NV4)



MODEL: NV6F

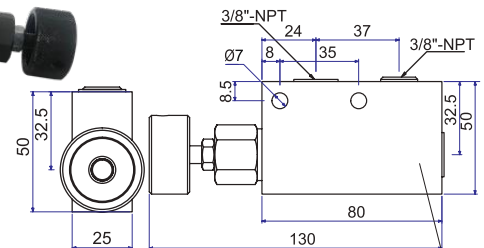
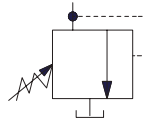
- Used for precise metering of flow
- Bypass flow control in return direction
- Temporary shut off only
- Maximum working pressure : 10,000 psi / 700 Bar



PRESSURE RELIEF VALVES

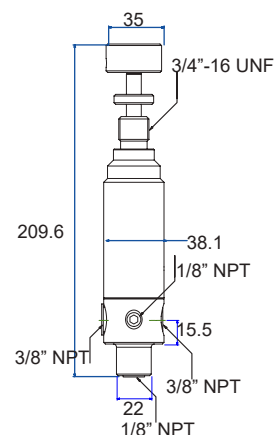
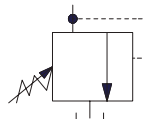
MODEL: PRV1C

- Inline pressure relief valve
- Adjustable from 7 - 700 bar
- Built in pressure relief valve
- Maximum working pressure : 10,000 psi / 700 Bar



MODEL: PRV2C

- Inline pressure regulator valve
- Adjustable from 7 - 700 bar
- Built in pressure relief valve
- Maximum working pressure : 10,000 psi / 700 Bar



SPECIFICATIONS

SHUT OFF VALVES

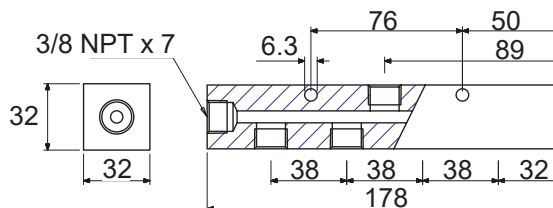
Model	Weight (kg)
PRV1C	0.8
PRV2C	0.8

PRESSURE RELIEF VALVES

Model	Weight (kg)
PRV1C	0.8
PRV2C	0.8

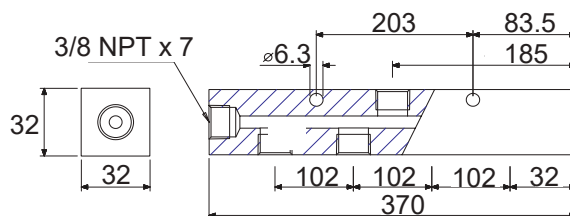
MODEL: MB7-S

- 7 X 3/8 NPT manifold block
- Ideal as return manifold or when gauges are not required
- Maximum working pressure : 10,000 psi / 700 Bar



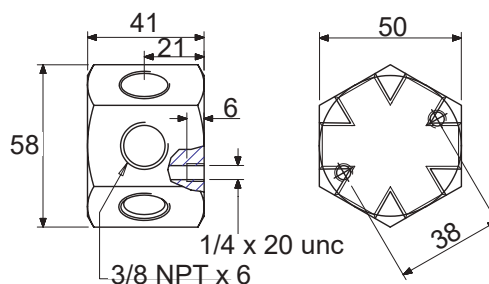
MODEL: MB7-L

- 7 X 3/8 NPT manifold block
- Larger gap between ports ideal for use with gauges
- Maximum working pressure : 10,000 psi / 700 Bar



MODEL: MB6H

- 6 X 3/8 NPT manifold block
- Hex design to allow for multiple angle connection
- Maximum working pressure : 10,000 psi / 700 Bar

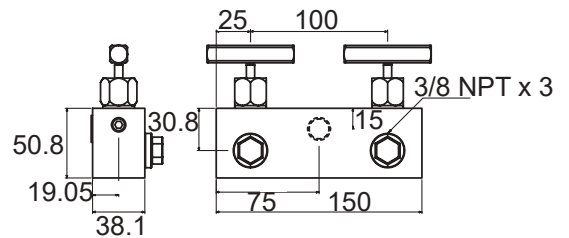


SPECIFICATIONS

Model	NPT Ports		Weight (kg)
	QTY	Thread	
MB7-S	7	3/8	1.5
MB7-L	7	3/8	1.2
MB6H	6	3/8	0.8

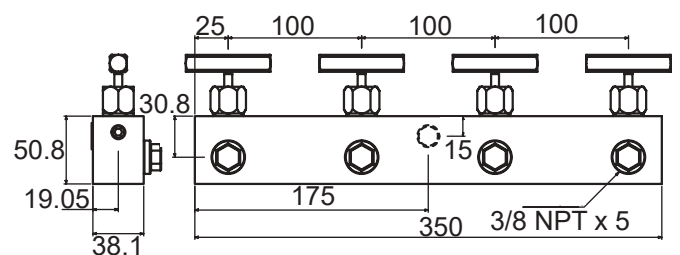
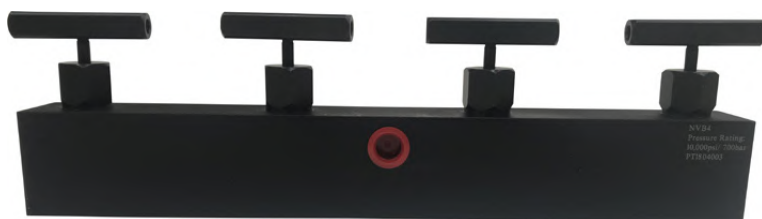
MODEL: NVB2

- 3 X 3/8 NPT ports
- Built in needle valves for 2 outlet load control
- Maximum working pressure : 10,000 psi / 700 Bar



MODEL: NVB4

- 5 X 3/8 NPT manifold block
- Built in needle valves for 4 outlet load control
- Maximum working pressure : 10,000 psi / 700 Bar

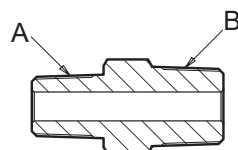


SPECIFICATIONS

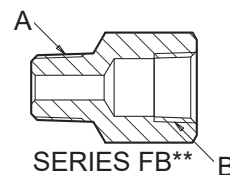
Model	NPT Ports		Weight (kg)
	QTY	Thread	
NVB2	3	3/8	1.7
NVB4	5	3/8	2.2

STRAIGHT CONNECTORS

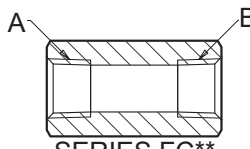
Model	(A)		(B)	
	Thread	Type	Thread	Type
FA66	$\frac{3}{8}$ NPT	Male	$\frac{3}{8}$ NPT	Male
FA44	$\frac{1}{4}$ NPT	Male	$\frac{1}{4}$ NPT	Male
FA46	$\frac{1}{4}$ NPT	Male	$\frac{3}{8}$ NPT	Male
FB46	$\frac{1}{4}$ NPT	Male	$\frac{3}{8}$ NPT	Female
FB64	$\frac{3}{8}$ NPT	Male	$\frac{1}{4}$ NPT	Female
FC66	$\frac{3}{8}$ NPT	Female	$\frac{3}{8}$ NPT	Female
FC44	$\frac{1}{4}$ NPT	Female	$\frac{1}{4}$ NPT	Female
FC46	$\frac{1}{4}$ NPT	Female	$\frac{3}{8}$ NPT	Female
FM66	$\frac{3}{8}$ NPT	Male	$\frac{3}{8}$ NPT	Female Swivel



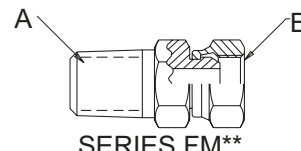
SERIES FA**



SERIES FB**



SERIES FC**

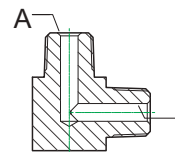


SERIES FM**

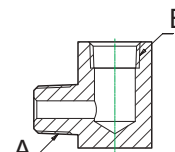


ELBOW AND TEE CONNECTORS

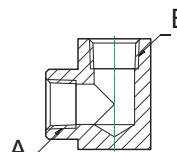
Model	(A)		(B)		(C)	
	Thread	Type	Thread	Type	Thread	Type
FD66	$\frac{3}{8}$ NPT	Male	$\frac{3}{8}$ NPT	Male	-	-
FE66	$\frac{3}{8}$ NPT	Male	$\frac{3}{8}$ NPT	Female	-	-
FF66	$\frac{3}{8}$ NPT	Female	$\frac{3}{8}$ NPT	Female	-	-
FG666	$\frac{3}{8}$ NPT	Male	$\frac{3}{8}$ NPT	Female	$\frac{3}{8}$ NPT	Female
FH444	$\frac{1}{4}$ NPT	Female	$\frac{1}{4}$ NPT	Female	$\frac{1}{4}$ NPT	Female
FH666	$\frac{3}{8}$ NPT	Female	$\frac{3}{8}$ NPT	Female	$\frac{3}{8}$ NPT	Female



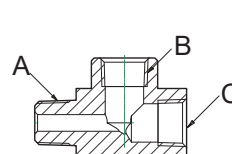
SERIES FD**



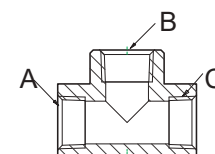
SERIES FE**



SERIES FF**



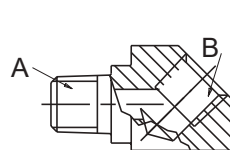
SERIES FG**



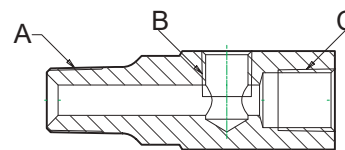
SERIES FH**

GAUGE CONNECTORS

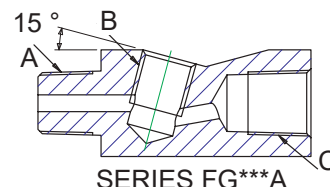
Model	(A)		(B)		(C)	
	Thread	Type	Thread	Type	Thread	Type
FP44	$\frac{1}{4}$ NPT	Male	$\frac{1}{4}$ NPT	Female	-	-
FG646	$\frac{3}{8}$ NPT	Male	$\frac{1}{4}$ NPT	Female	$\frac{3}{8}$ NPT	Female
FG646A	$\frac{3}{8}$ NPT	Male	$\frac{1}{4}$ NPT	Female	$\frac{3}{8}$ NPT	Female



SERIES FP**



SERIES FG**



SERIES FG**A

HIGH FLOW COUPLINGS

- Ball style
- Compatible with pin style couplings
- Coupling set comes with rubber dust caps
- Max flow 35 lpm
- Max working pressure 700 bar (10,000 psi)

Model	Size (NPT)	Thread type	Female half	Male half
FMC6	$\frac{3}{8}$	Female	-	✓
MC6	$\frac{3}{8}$	Male	✓	-
CS6	$\frac{3}{8}$	Male & Female	✓	✓
FMC4	$\frac{1}{4}$	Female	-	✓
MC4	$\frac{1}{4}$	Male	✓	-
MC4M	$\frac{1}{4}$	Male	-	✓



Models: FMC6 / FMC4



Models: MC6 / MC4



Model: MC4M



Model: CS6

FLUSH FACE COUPLINGS

- Zero leakage
- Push to connect positive locking
- Max flow 40 lpm
- Max working pressure 700 bar (10,000 psi)

Model	Size (NPT)	Thread type	Female half	Male half
FFC6M	$\frac{3}{8}$	Female	-	✓
FFC6F	$\frac{3}{8}$	Male	✓	-



Model: FFC6M



Model: FFC6F

DUST CAPS

Model	Size (NPT)	Material	Suits Coupler	
			Female half	Male half
DCS6M	$\frac{3}{8}$	Aluminium	-	✓
DCS6F	$\frac{3}{8}$	Aluminium	✓	-
DCR6	$\frac{3}{8}$	Rubber	✓	✓
DCS4M	$\frac{1}{4}$	Aluminium	-	✓
DCS4F	$\frac{1}{4}$	Aluminium	✓	-



Models: DCS6F / DCS4F



Models: DCS6M / DCS4M



Model: DCR6

HOSE FEATURES

- 4:1 safety factor
- Rubber guards on all models for crimp and bend protection
- Rubber dust caps supplied with all male couplings
- Working pressure 700 bar (10,000 psi)



HOSE MODEL CODES

Model	Hose length (m)	Hose ID	Hose end one	Hose end two
9765-P	0.6	6.4mm (1/4")	3/8 Npt	3/8 Npt
9755-P	0.9	6.4mm (1/4")	3/8 Npt	3/8 Npt
9756-P	1.8	6.4mm (1/4")	3/8 Npt	3/8 Npt
9757-P	2.4	6.4mm (1/4")	3/8 Npt	3/8 Npt
9758-P	3.1	6.4mm (1/4")	3/8 Npt	3/8 Npt
9759-P	3.7	6.4mm (1/4")	3/8 Npt	3/8 Npt
9760-P	6.1	6.4mm (1/4")	3/8 Npt	3/8 Npt
9761-P	9.1	6.4mm (1/4")	3/8 Npt	3/8 Npt
9762-P	15.3	6.4mm (1/4")	3/8 Npt	3/8 Npt
9750-P	22.9	6.4mm (1/4")	3/8 Npt	3/8 Npt
9751-P	30.5	6.4mm (1/4")	3/8 Npt	3/8 Npt
9765-PC	0.6	6.4mm (1/4")	3/8 Npt	MC6
9755-PC	0.9	6.4mm (1/4")	3/8 Npt	MC6
9756-PC	1.8	6.4mm (1/4")	3/8 Npt	MC6
9757-PC	2.4	6.4mm (1/4")	3/8 Npt	MC6
9758-PC	3.1	6.4mm (1/4")	3/8 Npt	MC6
9759-PC	3.7	6.4mm (1/4")	3/8 Npt	MC6
9760-PC	6.1	6.4mm (1/4")	3/8 Npt	MC6
9761-PC	9.1	6.4mm (1/4")	3/8 Npt	MC6
9762-PC	15.3	6.4mm (1/4")	3/8 Npt	MC6
9750-PC	22.9	6.4mm (1/4")	3/8 Npt	MC6
9751-PC	30.5	6.4mm (1/4")	3/8 Npt	MC6
9765-PC2	0.6	6.4mm (1/4")	MC6	MC6
9755-PC2	0.9	6.4mm (1/4")	MC6	MC6
9756-PC2	1.8	6.4mm (1/4")	MC6	MC6
9757-PC2	2.4	6.4mm (1/4")	MC6	MC6
9758-PC2	3.1	6.4mm (1/4")	MC6	MC6
9759-PC2	3.7	6.4mm (1/4")	MC6	MC6
9760-PC2	6.1	6.4mm (1/4")	MC6	MC6
9761-PC2	9.1	6.4mm (1/4")	MC6	MC6
9762-PC2	15.3	6.4mm (1/4")	MC6	MC6
9750-PC2	22.9	6.4mm (1/4")	MC6	MC6
9751-PC2	30.5	6.4mm (1/4")	MC6	MC6

HOSE ASSEMBLY OPTIONS

Suffix Code	Description
S	Supplied with burst protection sleeve
T	Supplied with test certificate
-MDG41	Full MDG41 compliant hose assembly
Custom lengths are available on request	

PRESSURE GAUGES - 1000 BAR

Boss hydraulic pressure gauges are dual scale displaying in both Bar and PSI. The gauges "red line" between 700 Bar/10,000 PSI up to 1000 Bar /14,500 PSI to protect the gauge from pressure spikes.



Boss gauges are fully adjustable, can be calibrated and supplied with NATA certification.

Part No.	Description	Size (mm)
G634B	Liquid filled 1/4 NPT bottom entry	63
G1004B	Liquid filled 1/4 NPT bottom entry	100

HYDRAULIC OIL

Boss hydraulic oil gives you the reassurance your hydraulic equipment will work at a premium level. Boss hydraulic oil is an ISO46 grade oil.



Part No.	Description	Size (lt)
B01L46	Hydraulic Oil - ISO46	1
B04L46	Hydraulic Oil - ISO46	4

***PORTA POWER KITS
HYDRAULIC TOOLING
WORKSHOP TOOLS
PULLERS***

MODEL: PPK-SERIES

- Quick “snap-together” design for fast and easy assembly and disassembly
- Extra thick extension tubes for added strength
- Blow moulded case for organised component storage and easy transport
- The PPK10 case has wheels for added portability
- Single Speed Pump (10,000 psi)
- Flexible hydraulic hose with hose guards at each end
- Pump has a forged base and rugged construction for extended life
- All components are manufactured to withstand the full force of the hydraulic cylinder
- Male coupling on hose for easy connection
- PPK4 - 19.6kg, PPK10 - 37.6kg



PPK4 - 4 TON KIT

Item No.	Part No.	Description
1	PH1035	Heavy Duty Hand Pump
2	1B12057	Cylinder Hose - 6 Feet
3	1B12059	4 Ton Cylinder - 4" Stroke
4	1B12060	½ Ton Spreader Cylinder
5	1B12033	16" Extension Tube
6	1B12034	12" Extension Tube
7	1B12035	8" Extension Tube
8	1B12036	4" Extensions Tube
9	1B12028	Male Connector
10	1B12049	Flat Base
11	1B12050	90° "V" Base
12	1B12051	Wedge Head
13	1B12052	Plunger Toe
14	1B12053	Cylinder Toe
15	1B12025	Rubber Flex Head
16	1B12048	Serrated Saddle
17	1B12055	Blow Moulded Case

PPK10 - 10 TON KIT

Item No.	Part No.	Description
1	PH1060	Heavy Duty Hand Pump
2	1B12057	Cylinder Hose - 6 Feet
3	B1B2058	10 Ton Cylinder - 6" Stroke
4	1B12060	½ Ton Spreader Cylinder
5	1B12029	19" Extension Tube
6	1B12030	14" Extension Tube
7	1B12031	10" Extension Tube
8	1B12032	5" Extensions Tube
9	1B12027	Male Connector
10	1B12043	Flat Base
11	1B12044	90° "V" Base
12	1B12045	Wedge Head
13	1B12046	Plunger Toe
14	1B12047	Cylinder Toe
15	1B12026	Rubber Flex Head
16	1B12042	Serrated Saddle
17	1B12054	Blow Moulded Case

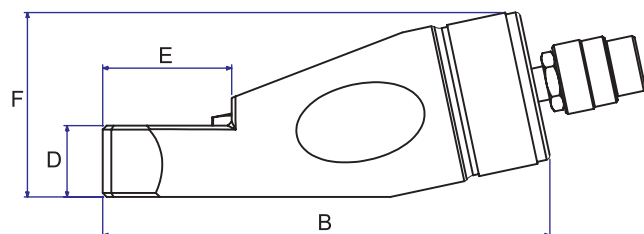
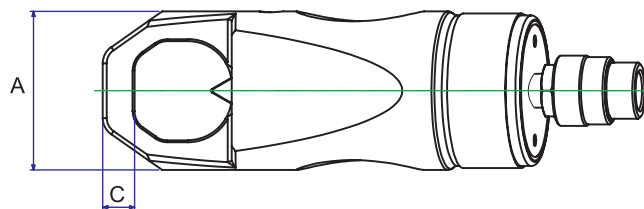


MODEL: NSH-SERIES

- Hydraulic Nut Splitter
- Capacity : 10 - 50 Ton
- Bolt Range: M12 - M39
- Maximum working pressure : 10,000 psi / 700 Bar

FEATURES

- Compact design will optimise use in confined spaces
- All models have a one piece cutting frame coupled to a heavy duty hydraulic cylinder
- Cutter blade designed with added strength
- Angle head design keeps the tool in full contact with the nut
- Replacement blades available



SPECIFICATIONS

Model	Hex Nut Range (mm)	Bolt Range (mm)	Cap. Ton	Oil Cap. (c.c)	A (mm)	B (mm)	C (mm)	D (mm)	E (mm)	F (mm)	Weight (kg)
NSH1924	19-24	M12-M16	10	20	60	167	10	25	40	68	2.1
NSH2432	24-32	M16-M22	15	60	70	178	13	30	52	76	3.1
NSH3241	32-41	M22-M27	20	80	80	226	15	36	65	93	4.2
NSH4150	41-50	M27-M33	35	155	95	244	21	45	76	106	8
NSH5060	50-60	M33-M39	50	240	106	269	24	55	92	125	11.5



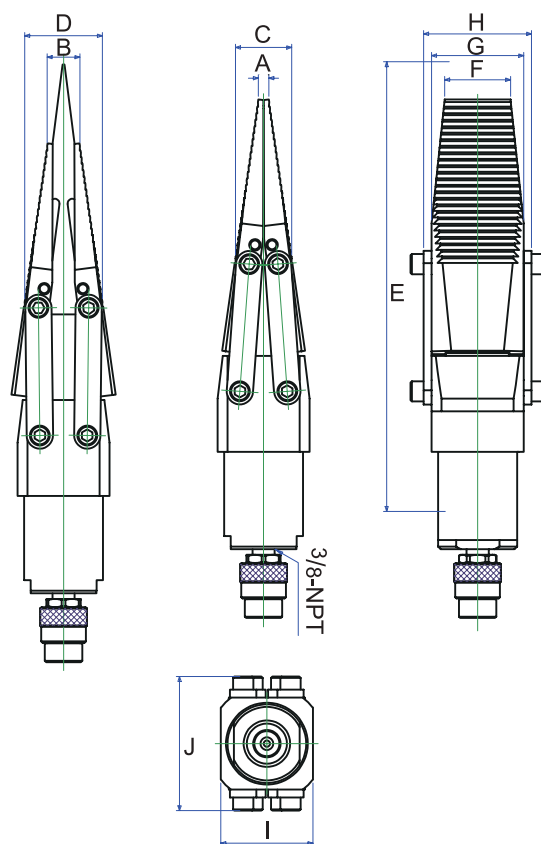
MODEL: SH-SERIES

- Capacity : 15 - 25 Ton
- Maximum working pressure : 10,000 psi / 700 Bar

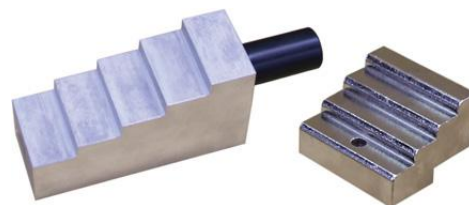
FEATURES

- Compact design will optimise use in low clearance applications
- Lightweight for increased portability
- Manufactured from high quality hardened steel

SPECIFICATIONS



Model	Cap. Ton	Spread (mm) A / B	Stroke (mm)	C (mm)	D (mm)	E (mm)	F (mm)	G (mm)	H (mm)	I (mm)	J (mm)	Weight (kg)
SH15	15	6 / 16	25	36	46	232	31	45	55	63	63	3.3
SH15-S	15	6 / 16	25	36	46	232	31	45	55	63	63	3.3
SH25	25	8 / 25	65	43	59	342	50	70	82	70	102	7.8



MODEL: LWH SERIES

- Hydraulic Lifting Wedge - Single Acting
- Capacity : 18 Ton
- Maximum working pressure : 10,000 psi / 700 Bar

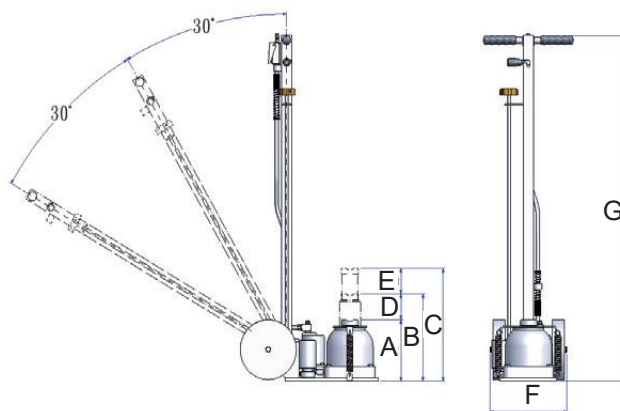
FEATURES

- Compact design will optimise use in low clearance applications
- Lifts in a straight and vertical motion
- Supplied with wedge set

SPECIFICATIONS

Model	Cap. Ton	Min Height (mm)	Max Height (mm) No Blocks / With Blocks	Max Pressure	Weight (kg)
LWM18T	18	9.5	51.5 / 67.5	700 Bar	12
LWH18T	18	9.5	51.5 / 67.5	700 Bar	18

AIR HYDRAULIC JACK



MODEL: JAT-SERIES

- Portable Air Hydraulic Jack
- Capacity : 15 - 50 Ton
- Maximum working pressure : 10,000 psi / 700 Bar

FEATURES

- Forged base providing robust design
- Telescopic design on JAT1527 & JAT2035
- Adjustable handle positions
- Equipped with large rubber wheels for easy mobility

SPECIFICATIONS

Model	Cap Ton	A (mm)	B (mm)	C (mm)	D (mm)	E (mm)	F (mm)	G (mm)	Weight (kg)
JAT1527	15-27	205	291	377	86	86	460	1155	45.5
JAT2035	20-35	205	291	377	86	86	490	1155	55.5
JAT300	30	247	367	-	120	-	460	1155	43
JAT500	50	266	369	-	130	-	490	1155	53.5

PRY AND JIMMY BARS

FEATURES

- Made in USA
- Heat treated chrome alloy steel
- Resists bending and breaking
- Rolling head on pry bars
- Tapered bodies on all models

PRY BARS

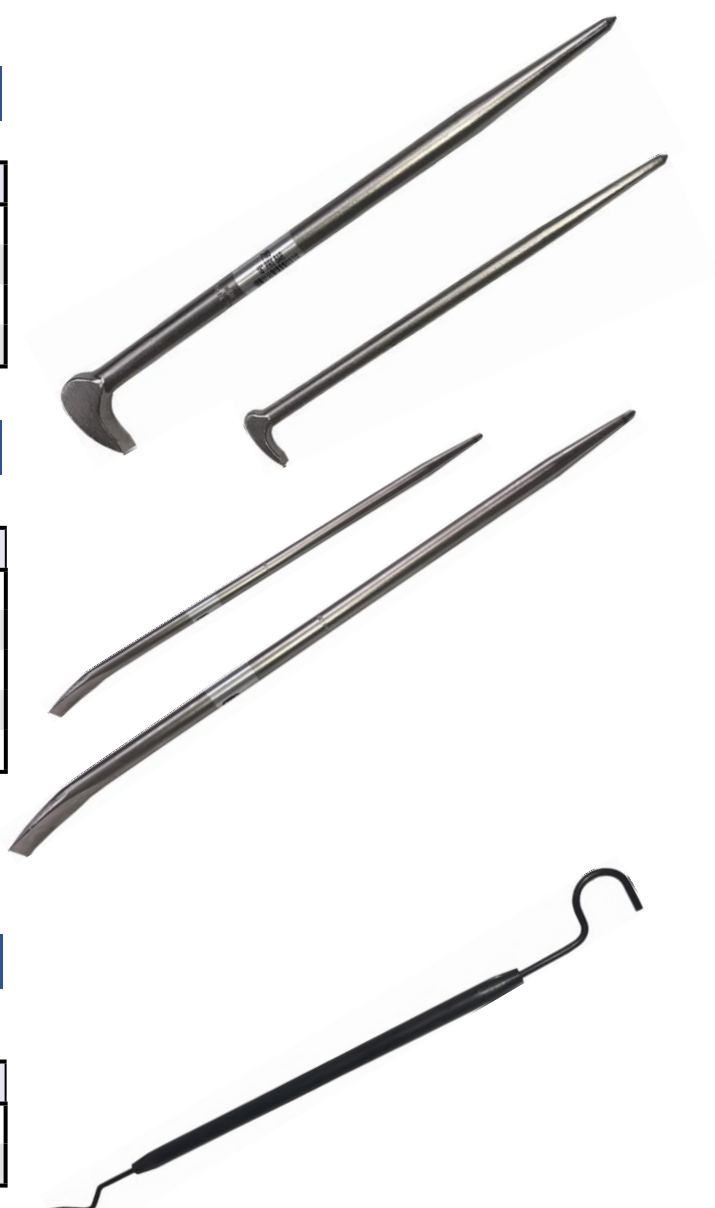
Part No.	Description	Weight (kg)
7162	9.5mm round. Length 152mm	0.1
7163	11.1mm round. Length 305mm	0.3
7164	14.3mm round. Length 406mm	0.5
7165	19mm round. Length 457mm	1

JIMMY BARS

Part No.	Description	Weight (kg)
7166	15.9mm round. Length 457mm	0.6
7167	19mm round. Length 610mm	1.1
7168	22.2mm round. Length 762mm	2
7420	14.3mm round. Length 406mm	3.4
7421	19mm round. Length 457mm	5.2

O'RING SEAL PICKS

Part No.	Description	Weight (kg)
7103	Seal pick set	0.05
7312	Single seal pick	0.05



FEATURES

- Made from 100% recycled plastic
- Durable heavy duty construction
- 3 load rating capacities (Yellow, Blue, Orange)
- 2 locking styles ("Pyramid" and "Lincoln log")
- Washable and impervious to most common industrial chemicals
- Resistant to splintering unlike timber alternatives
- Working load limit tags printed on product
- Huge range of different shapes and sizes available

D SERIES CRIB LINE

- Creates a completely interlocking base
- Coloured lanyard helps identify load limits
- Pyramid design on all sides

Part No.	Description	Dimensions (mm)	Weight (kg)	Capacity (kg)
ZT-67HDC-10	Little Black Diamond Crib	152 x 178 x 254	7.25	71,600
ZT-67HDC-30	Black Diamond Crib	152 x 178 x 762	18.14	23,700
ZT-44HDC-30	Profile Crib	102 x 102 x 762	7.71	50,800

Black Diamond Crib Series



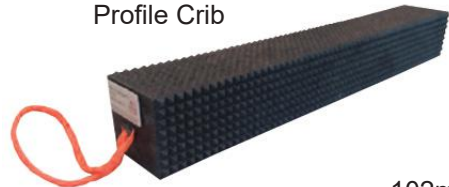
Orange lanyard indicates Heavy Working Load Limit



Yellow lanyard indicates Light Working Load Limit

152mm x 178mm

Profile Crib



Orange lanyard indicates Heavy Working Load Limit

102mm x 102mm

G SERIES CRIB LINE

- Two working surfaces in one block
- "Lincoln log" style locking for additional stability when multi stacking
- Coloured lanyard helps identify load limits
- Pyramid design provides a non slip secondary surface

Part No.	Description	Dimensions (mm)	Weight (kg)	Capacity (kg)
ZT-67PC-24	Prime Crib	152 x 178 x 610	12.24	58,800
ZT-67SC-24	Super Crib	152 x 178 x 610	10.43	49,900
ZT-66SC-36	Super Crib XL	152 x 152 x 914	17.23	78,400
ZT-44PL-18	Hybrid Crib	102 x 102 x 457	2.72	20,500
ZT-44SC-36	Hybrid Crib XL	102 x 102 x 914	8.16	53,200

Prime Crib



Orange lanyard indicates Heavy Working Load Limit



152mm x 178mm

Super Crib



Blue lanyard indicates Medium Working Load Limit

152mm x 178mm

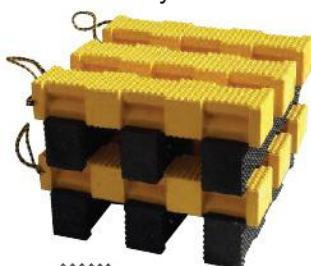
Super Crib XL



Orange lanyard indicates Heavy Working Load Limit

152mm x 152mm

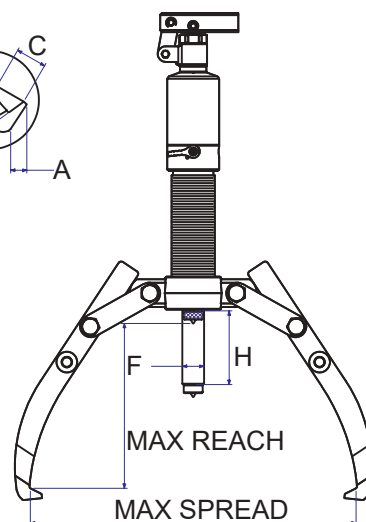
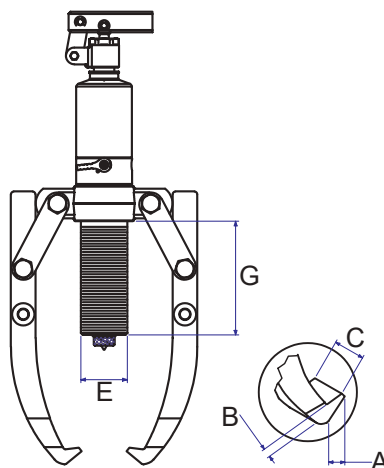
Hybrid Crib



102mm x 102mm



Yellow lanyard indicates Light Working Load Limit



MODEL: HPM-SERIES

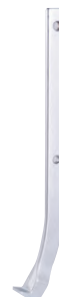
- Self contained puller and pump with built in safety valve
- Capacity: 4-30 ton

FEATURES

- Heat treated, chrome plated and alloy steel studs
- 2 or 3 jaw options
- 360° handle rotation
- Easy access release valve
- Removable spring loaded self centering nut

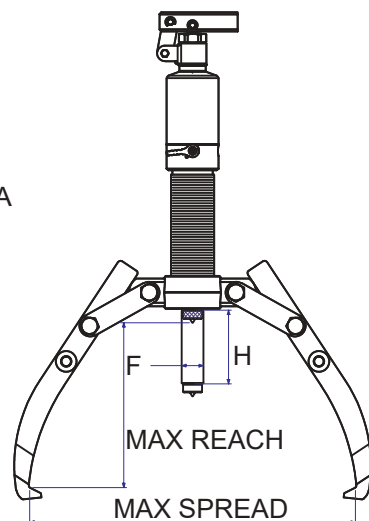
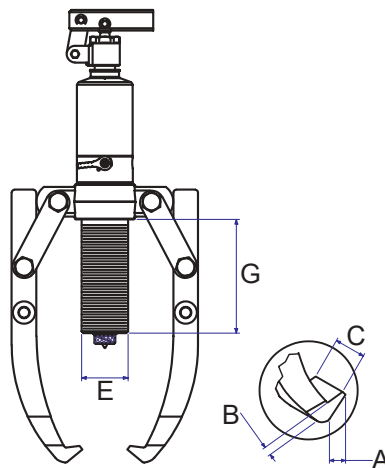
OPTIONAL LONGER JAWS

Model (Puller)	Model (Jaw)	Cap Ton	Reach Max (mm)
HPM4	1B12062	4	222
HPM6	1B12063	6	260
HPM8	1B12064	8	308
HPM12	1B12065	12	340
HPM20	1B12066	20	428
HPM30	1B12067	30	428



SPECIFICATIONS

Model	Cap Ton	Reach Max (mm)	Spread Max (mm)	Jaw Tip (mm)			Pump Tip (mm)			Stroke (mm) H	Weight (kg)
				A	B	C	E	F	G		
HPM4	4	185	255	11	6	22	42	22	84	60	4.5
HPM6	6	220	330	11	10	22	45	23	94	70	5.5
HPM8	8	230	350	11	10	25	50	25	122	85	6.5
HPM12	12	270	375	14	10	29	60	28	118	85	8
HPM20	20	360	520	20	27	33	50	40	161	111	22
HPM30	30	360	550	20	27	38	42	50	155	111	32

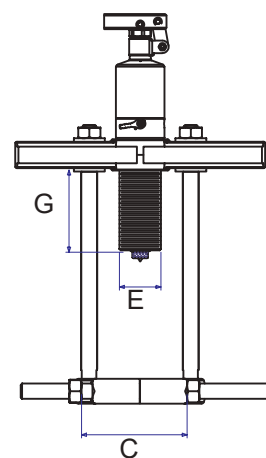
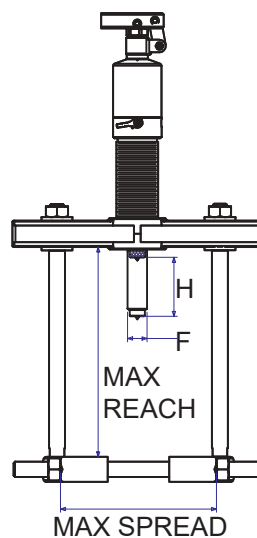


MODEL: HPM-K -SERIES

- Self contained puller and pump with built in safety valve
- Capacity: 4-12 ton

FEATURES

- Heat treated, chrome plated and alloy steel studs
- 2 or 3 jaw options
- 360° handle rotation
- Easy access release valve
- Removable spring loaded self centering nut
- Set includes bearing attachment and straight leg attachments



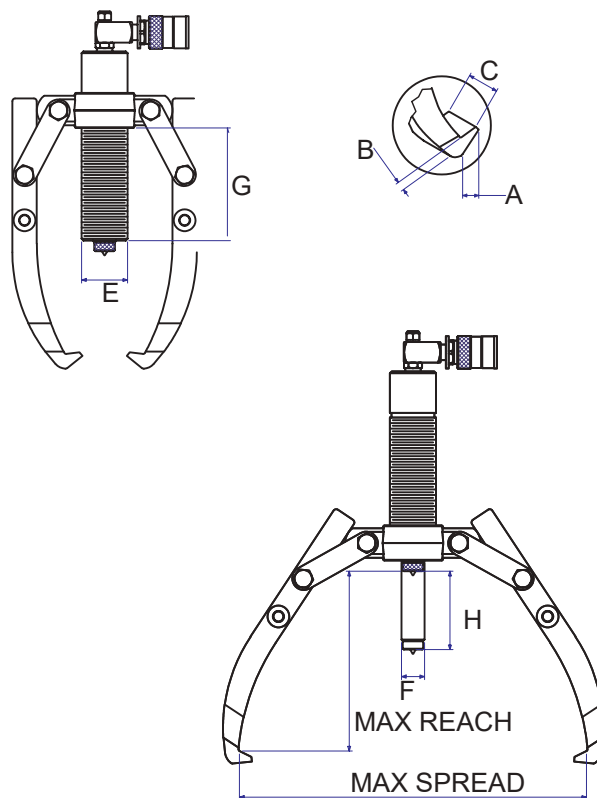
SPECIFICATIONS

Model	Cap Ton	Reach Max (mm)	Spread Max (mm)	Jaw Tip (mm)			Pump Tip (mm)			Stroke (mm) H	Weight (kg)
				A	B	C	E	F	G		
HPM4K	4	185/250	255/250	11	6	22	42	22	84	60	4.5/8.5
HPM6K	6	22/250	350/250	13	10	22	45	23	94	70	5.5/11.5
HPM8K	8	230/250	350/250	11	10	25	50	25	122	85	6.5/12.6
HPM12K	12	270/250	375/250	14	10	29	60	28	118	85	8.0/18.0



MODEL: HPRP-SERIES

- Hydraulic puller with separate hand pump
- Capacity : 4-30 ton



FEATURES

- Separate hand pump with built in safety valve
- Heat treated, chrome plated and alloy steel studs
- 2 or 3 jaw options
- 360° coupling swivel
- Easy release valve
- Removable spring loaded self centering nut

OPTIONAL LONGER JAWS

Model (Puller)	Model (Jaw)	Cap Ton	Reach Max (mm)
HPRP4	1B12062	4	222
HPRP8	1B12064	8	308
HPRP12	1B12065	12	340
HPRP20	1B12066	20	428
HPRP30	1B12067	30	428



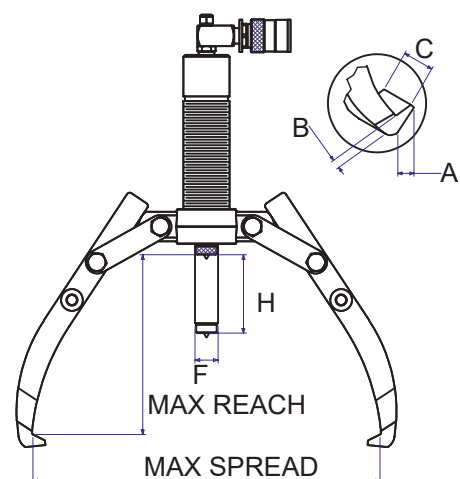
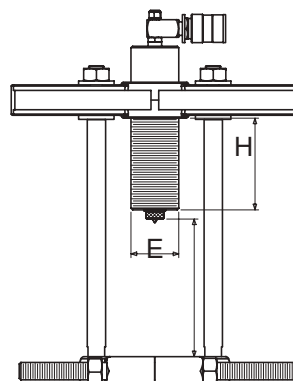
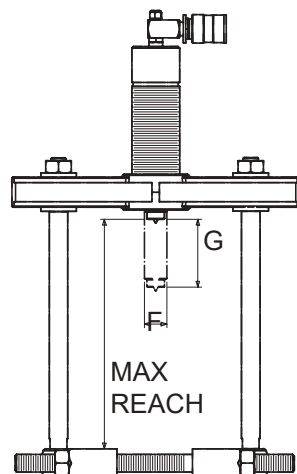
SPECIFICATIONS

Model	Cap Ton	Reach Max (mm)	Spread Max (mm)	Jaw Tip (mm)			Pump Tip (mm)			Stroke (mm) H	Weight (kg)
				A	B	C	E	F	G		
HPRP4	4	185	255	11	6	22	42	22	84	60	9.5
HPRP8	8	230	350	11	10	25	50	25	122	85	11.5
HPRP12	12	270	375	14	10	29	60	28	118	85	14
HPRP20	20	360	520	20	27	33	50	40	161	111	20
HPRP30	30	360	550	20	27	38	42	50	155	111	30



MODEL: HPRP-K -SERIES

- Hydraulic puller with separate hand pump
- Capacity : 4, 8 & 12 ton models
- Comes with 2 and 3 jaw attachments
- Includes cross bearing attachment



FEATURES

- Heat treated, chrome plated and alloy steel studs
- 2 or 3 jaw options
- 360° handle rotation
- Easy access release valve
- Removable spring loaded self centering nut

OPTIONAL LONGER JAWS

Model (Puller)	Model (Jaw)	Cap Ton	Reach Max (mm)
HPRP4	1B12062	4	222
HPRP8	1B12064	8	308
HPRP12	1B12065	12	340



SPECIFICATIONS

Model	Cap Ton	Reach Max (mm)	Spread Max (mm)	Jaw Tip (mm)			Pump Tip (mm)			Stroke (mm) H	Weight (kg)
				A	B	C	E	F	G		
HPRP4K	4	185/211	255/250	11	6	22	42	22	84	60	4.5/8.5
HPRP8K	8	230/243	350/250	11	10	25	50	25	122	85	6.5/12.6
HPRP12K	12	270/288	375/250	14	10	29	60	28	118	85	8.0/18.0

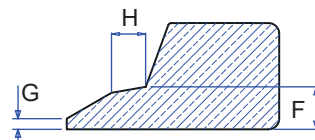
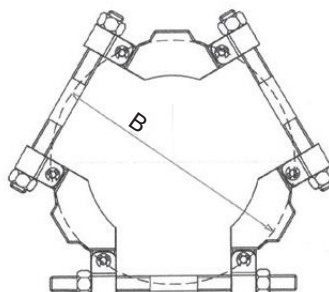
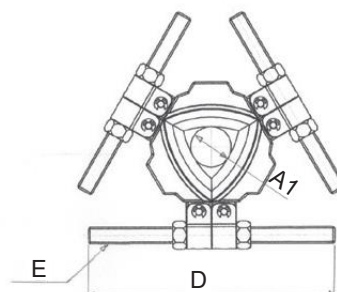
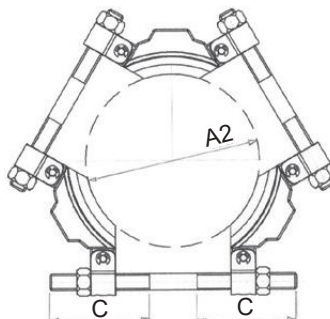


MODEL: HPA-SERIES

- Capacity : 6 - 30 Ton
- Max Spread: 216mm - 660mm

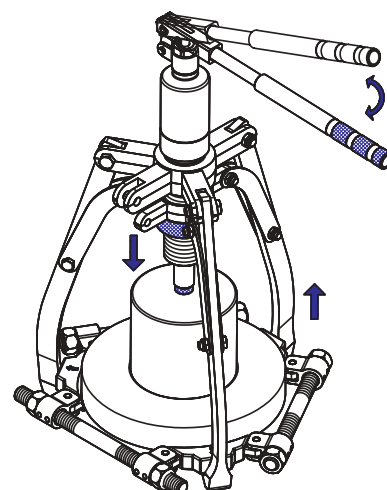
FEATURES

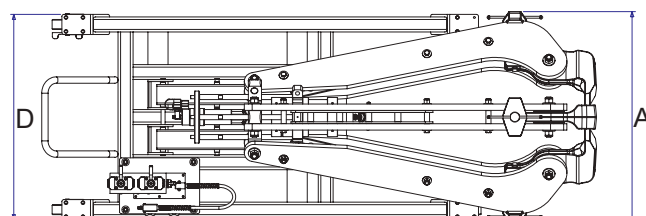
- Patented swing arm design for maximum spread
- Can be used with all 3-Jaw Pullers
- Provides force on both inner and outer ring for safe and efficient pulling
- Simple and Easy setup



SPECIFICATIONS

Model	Cap Ton	Available Shaft Ø A1 / A2	Max Spread (mm)	C (mm)	D (mm)	E (mm)	F (mm)	G (mm)	H (mm)	Weight (kg)
HPA3-160	6	26 / 160	216	105	240	5/8"-11 UNC	8	2	6.5	3.5
HPA3-210	8	50 / 210	280	117	285	7/8"-14 UNF	10	2	9	5.5
HPA3-340	20	90 / 340	460	175	430	1 1/4"-12 UNF	14	2	8	18
HPA3-495	30	140 / 495	660	235	610	1 3/4"-12 UNF	20	2	12	45



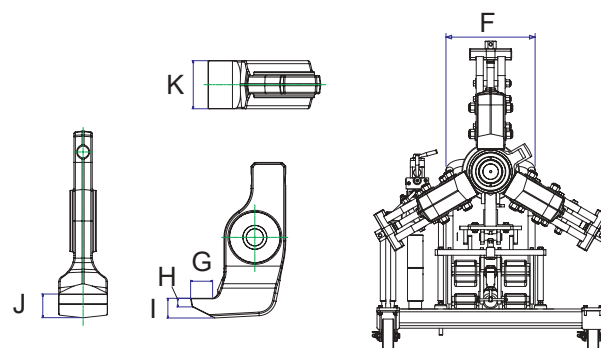
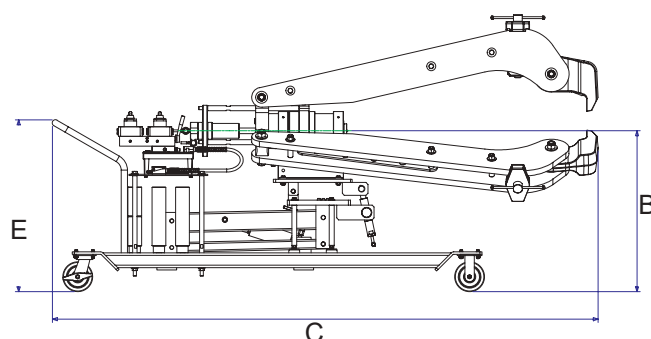


MODEL: HP-SERIES

- 100T pulling capacity
- Trolley mounted
- Single and 3 phase available

FEATURES

- Air/Hydraulic height adjustment
- Metered flow for precise speed control
- Double acting system for safe opening and closing of jaws
- Self centering design
- 2 or 3 jaw capabilities
- 5° up/down swivel adjustment for precise positioning

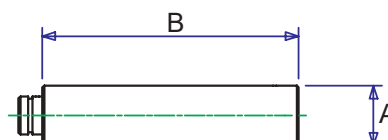


SPECIFICATIONS

Model	Stroke (mm)	Capacity (Ton)	A Min/Max (mm)	B Min/Max (mm)	C Min/Max (mm)	D (mm)	E (mm)	F (mm)	G (mm)	H (mm)	I (mm)	J (mm)	K (mm)	Weight (kg)	Pump
HP1003-220	270	100	1030-1980	817-1330	2390-2790	1025	873	402	65	25	58	58	120	1150	PED065
HP1003-380	270	100	1030-1980	817-1330	2390-2790	1025	873	402	65	25	58	58	120	1185	PED195

PULLER EXTENSIONS

Model	A (mm)	B (mm)	QTY
1B12020	70	150	2
1B12021	70	300	2





MODEL: HPJB-SERIES

- Rail Bearing Puller / Installer
- Capacity : 100 Ton
- Maximum working pressure : 10,000 psi / 700 Bar

FEATURES

- Designed for easy dismantling and installing of Rail axle bearings
- Simple, efficient and easy operation providing pulling force up to 100 ton
- Portable unit for easy manoeuvring and storage

SPECIFICATIONS

Model	Stroke (mm)	Capacity (Ton) Pull / Install	A (mm)	B (mm)	C (mm)	D (mm)	E (mm)	F (mm)	Weight (kg)	Pump
HPJB100-220	392	100 / 68	652	370	1047	900	1940-2209	1530	775	PED065
HPJB100-380	392	100 / 68	652	370	1047	900	1940-2209	1530	805	PED180
HPSJB100-220	254	100 / 68	627	384	731	909	1299	1175	370	PED065
HPSJB100-380	254	100 / 68	627	384	731	909	1299	1175	410	PED180

Imperial Accessories	Class B 108 x 203	Class C 127 x 229	Class D 140 x 254	Class E 152 x 279	Class EE 140 axle	Class EE 152 axle	Class F 165 x 305	Class G 178 x 305	Class G 165 axle	Class GG 165 axle
Pulling Shoe	1B11916 - Included as part of basic machine							1B11917	1B11917	1B11917
Pulling shoe insert adaptor	1B11914	1B11911	1B11912	1B11913	1B11913	1B11915	1B11915	-	-	-
Guide tube & cap screw assembly	1B11908	1B11909	1B11900	1B11901	1B11902	1B11903	1B11904	1B11906	1B11905	1B11907
Cap Screw **	1B11920	1B11921	1B11922	1B11923	1B11924	1B11922	1B11925	1B11927	1B11926	1B11926
Guide tube adaptor	1B11882	1B11881	1B11881	1B11883	1B11883	1B11883	1B11883	1B11883	1B11883	1B11883
Installing tube	1B11894 - Included as part of basic machine							1B11895	1B11895	1B11895
Installing tube adaptor ring	1B11880	1B11888	1B11889	1B11890	1B11890	1B11891	1B11891	1B11893	1B11892	1B11892

Metric Accessories	120	130	140	150
Pulling shoe insert adaptor	1B11910	1B11911	1B11912	1B11913
Guide tube & cap screw assembly	1B11896	1B11897	1B11898	1B11899
Cap Screw **	1B11918	1B11918	1B11918	1B11919
Guide tube adaptor	1B11883	1B11883	1B11883	1B11883
Installing tube adaptor ring	1B11884	1B11885	1B11886	1B11887

** Screws are supplied with the guide tube and should be ordered as replacements only



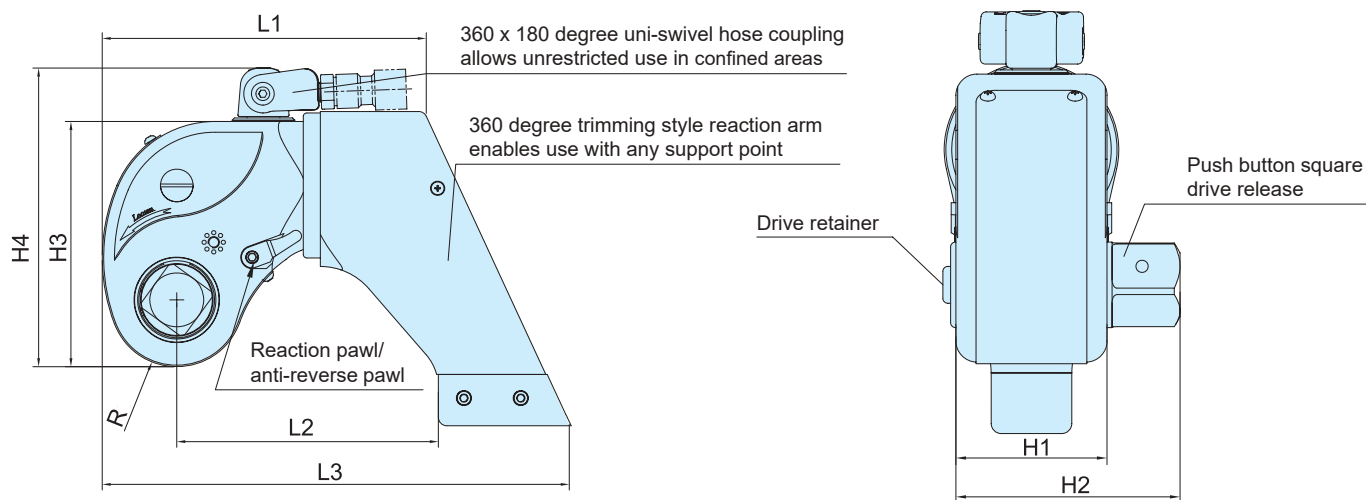
PROTORC BOLTING TORQUE WRENCHES HYDRAULIC PUMPS

MODEL: PTSD-SERIES

- ProTorc PTSD Hydraulic Square Drive Torque Wrenches are manufactured using high grade aluminium-titanium alloy and high strength alloy steel
- High repeatability can be achieved due to the precise design with an accuracy of +/- 3%
- The 360 x 180 degree uni-swivel hose coupling enables the tool to be used unrestricted in confined areas and eliminates hose kinking
- Torsion resistant housing and torsion free operation
- 360 degree positioning of reaction arm
- Anti-reverse pawl design
- Support handle supplied with models PTSD05 and above
- Two Year Manufacturers Warranty *



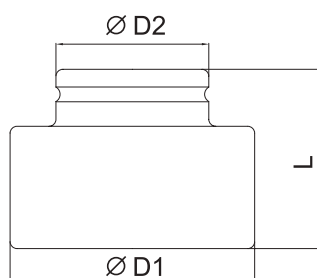
		PTSD02	PTSD05	PTSD08	PTSD10	PTSD16	PTSD20	PTSD28	PTSD36	PTSD50	PTSD70
Max. Torque	Nm	1760	4332	7420	10430	15090	19409	26447	34626	47414	69247
	ft/lbs	1299	3197	5476	7697	11137	14324	19518	25554	34992	51105
Min. Torque	Nm	164	433	742	1015	1509	1940	2504	3309	4741	6925
	ft/lbs	121	320	548	749	1114	1432	1848	2442	3499	5111
Sqr. Drive		3/4"	1"	1 - 1/2"	1 - 1/2"	1 - 1/2"	2 - 1/2"	2 - 1/2"	2 - 1/2"	2 - 1/2"	2 - 1/2"
L1 (mm)		130	170	202	228	237	273	287	323	351	376
L2 (mm)		102	140	160	184	192	223	248	256	271	295
L3 (mm)		182	249	286	326	336	391	433	464	494	528
H1 (mm)		52	70	81	90	100	110	120	138	153	162
H2 (mm)		77	98	125	134	144	164	187	206	217	226
H3 (mm)		96	127	149	172	181	206	221	258	279	291
H4 (mm)		133	165	184	207	216	241	256	293	315	326
R (mm)		25.8	34.8	39.8	46.8	50.8	56.8	59.8	70.8	76.8	78.8
Weight (kg)		2	4	7	10.6	12.9	20	25	33.8	43	52



* Conditions apply - contact ProTorc for more information



- Manufactured from high strength alloy steel in accordance with DIN Standards 3121 and 3129
- Machined from solid steel and hardened with heat treatment ensuring durability and longevity
- Non-standard socket sizes available upon request - contact ProTorc.



PTSK15 - 1-1/2" SOCKETS

Part No.	Bolt Type	Hex Size	L (mm)	D1 (mm)	D2 (mm)
PTSK15-36	M24	36	79	63	69
PTSK15-41	M27	41	87	63	69
PTSK15-46	M30	46	90	69	69
PTSK15-50	M33	50	92	76	76
PTSK15-55	M36	55	92	82	82
PTSK15-60	M39	60	94	90	86
PTSK15-65	M42	65	97	99	86
PTSK15-70	M45	70	100	108	86
PTSK15-75	M48	75	103	116	86
PTSK15-80	M52	80	110	123	88
PTSK15-85	M56	85	114	130	90
PTSK15-90	M60	90	116	138	92
PTSK15-95	M64	95	120	145	94
PTSK15-100	M68	100	124	153	96
PTSK15-105	M72	105	126	160	100
PTSK15-110	M76	110	129	176	110
PTSK15-115	M80	115	133	182	116
PTSK15-120	M85	120	138	188	122
PTSK15-130	M90	130	143	199	133

PTSK075 - 3/4" SOCKETS

Part No.	Bolt Type	Hex Size	L (mm)	D1 (mm)	D2 (mm)
PTSK075-24	M16	24	46	38	35
PTSK075-27	M18	27	48	42	36
PTSK075-30	M20	30	50	46	38
PTSK075-34	M22	34	52	48	40
PTSK075-36	M24	36	54	52	42
PTSK075-41	M27	41	57	58	44
PTSK075-46	M30	46	60	64	46
PTSK075-50	M33	50	63	70	48
PTSK075-55	M36	55	66	76	50

PTSK25 - 2-1/2" SOCKETS

Part No.	Bolt Type	Hex Size	L (mm)	D1 (mm)	D2 (mm)
PTSK25-50	M33	50	76	114	114
PTSK25-55	M36	55	99	114	114
PTSK25-60	M39	60	102	114	114
PTSK25-65	M42	65	105	114	114
PTSK25-70	M45	70	108	114	114
PTSK25-75	M48	75	113	116	116
PTSK25-80	M52	80	120	123	120
PTSK25-85	M56	85	124	130	124
PTSK25-90	M60	90	126	138	128
PTSK25-95	M64	95	130	145	132
PTSK25-100	M68	100	134	153	136
PTSK25-105	M72	105	138	160	140
PTSK25-110	M76	110	142	168	144
PTSK25-115	M80	115	146	175	148
PTSK25-120	M85	120	152	182	150
PTSK25-130	M90	130	156	196	152
PTSK25-135	M95	135	162	212	155
PTSK25-145	M100	145	167	228	158
PTSK25-150	M105	150	172	230	160
PTSK25-155	M110	155	177	232	160
PTSK25-165	M115	165	182	240	174

PTSK1 - 1" SOCKETS

Part No.	Bolt Type	Hex Size	L (mm)	D1 (mm)	D2 (mm)
PTSK1-30	M20	30	65	45	45
PTSK1-34	M22	34	67	47	47
PTSK1-36	M24	36	69	52	52
PTSK1-41	M27	41	72	59	52
PTSK1-46	M30	46	75	65	52
PTSK1-50	M33	50	77	71	52
PTSK1-55	M36	55	77	79	52
PTSK1-60	M39	60	79	84	53
PTSK1-65	M42	65	83	90	56
PTSK1-70	M45	70	86	98	61
PTSK1-75	M48	75	89	104	64

MODEL: PTHD - SERIES

- Designed specifically for use with ProTorc PTSD Hydraulic Wrenches
- Manufactured from high strength hardened steel
- Comply with DIN Standard 3121 and 3129.

Wrench Model	Hex Size A/F (in.)	Part No.	Hex Size A/F (mm)	Part No.
PTSD02	5/8	PTHD02-063	17	PTHD02-017
	3/4	PTHD02-075	19	PTHD02-019
	7/8	PTHD02-088	22	PTHD02-022
	1	PTHD02-100	24	PTHD02-024
	-	-	27	PTHD02-027
PTSD05	5/8	PTHD05-063	17	PTHD05-017
	3/4	PTHD05-075	19	PTHD05-019
	7/8	PTHD05-088	22	PTHD05-022
	1	PTHD05-100	24	PTHD05-024
	1-1/8	PTHD05-113	27	PTHD05-027
	1-1/4	PTHD05-125	30	PTHD05-030
	1-3/8	PTHD05-138	32	PTHD05-032
PTSD08	7/8	PTHD08-088	22	PTHD08-022
	1	PTHD08-100	24	PTHD08-024
	1-1/8	PTHD08-113	27	PTHD08-027
	1-1/4	PTHD08-125	30	PTHD08-030
	1-3/8	PTHD08-138	32	PTHD08-032
	1-1/2	PTHD08-150	36	PTHD08-036
	1-5/8	PTHD08-163	41	PTHD08-041
PTSD10	1-1/8	PTHD10-113	27	PTHD10-027
	1-1/4	PTHD10-125	30	PTHD10-030
	1-3/8	PTHD10-138	32	PTHD10-032
	1-1/2	PTHD10-150	36	PTHD10-036
	1-5/8	PTHD10-163	41	PTHD10-041
	1-3/4	PTHD10-175	46	PTHD10-046
	1-1/4	PTHD16-125	30	PTHD16-030
PTSD16	1-3/8	PTHD16-138	32	PTHD16-032
	1-1/2	PTHD16-150	36	PTHD16-036
	1-5/8	PTHD16-163	41	PTHD16-041
	1-3/4	PTHD16-175	46	PTHD16-046
	1-7/8	PTHD16-188	50	PTHD16-050
PTSD20	1-3/8	PTHD20-138	32	PTHD20-032
	1-1/2	PTHD20-150	36	PTHD20-036
	1-5/8	PTHD20-163	41	PTHD20-041
	1-3/4	PTHD20-175	46	PTHD20-046
	1-7/8	PTHD20-188	50	PTHD20-050
	2	PTHD20-200	55	PTHD20-055

Wrench Model	Hex Size A/F (in.)	Part No.	Hex Size A/F (mm)	Part No.
PTSD28	1-1/2	PTHD28-150	36	PTHD28-036
	1-5/8	PTHD28-163	41	PTHD28-041
	1-3/4	PTHD28-175	46	PTHD28-046
	1-7/8	PTHD28-188	50	PTHD28-050
	2	PTHD28-200	55	PTHD28-055
	2-1/4	PTHD28-225	60	PTHD28-060
PTSD36	1-1/2	PTHD36-150	36	PTHD36-036
	1-5/8	PTHD36-163	41	PTHD36-041
	1-3/4	PTHD36-175	46	PTHD36-046
	1-7/8	PTHD36-188	50	PTHD36-050
	2	PTHD36-200	55	PTHD36-055
	2-1/4	PTHD36-225	60	PTHD36-060
PTSD50	2-1/2	PTHD36-250	65	PTHD36-065
	1-1/2	PTHD50-150	36	PTHD50-036
	1-5/8	PTHD50-163	41	PTHD50-041
	1-3/4	PTHD50-175	46	PTHD50-046
	1-7/8	PTHD50-188	50	PTHD50-050
	2	PTHD50-200	55	PTHD50-055
	2-1/4	PTHD50-225	60	PTHD50-060
	2-1/2	PTHD50-250	65	PTHD50-065
	2-3/4	PTHD50-275	70	PTHD50-070
	1-1/2	PTHD70-150	36	PTHD70-036
PTSD70	1-5/8	PTHD70-163	41	PTHD70-041
	1-3/4	PTHD70-175	46	PTHD70-046
	1-7/8	PTHD70-188	50	PTHD70-050
	2	PTHD70-200	55	PTHD70-055
	2-1/4	PTHD70-225	60	PTHD70-060
	2-1/2	PTHD70-250	65	PTHD70-065
	2-3/4	PTHD70-275	70	PTHD70-070



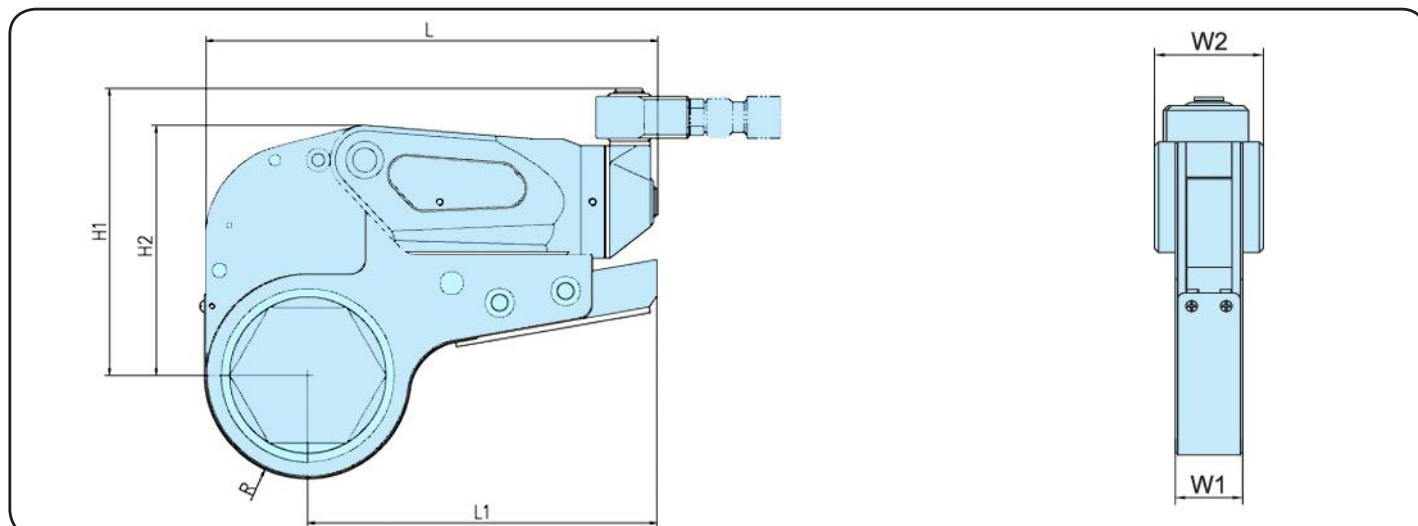
MODEL: PTLC - SERIES

- ProTorc PTLC Low Clearance Hydraulic Torque Wrenches are manufactured using high grade aluminium-titanium alloy and high strength alloy
- Equipped with a 360 x 270 degree uni-swivel coupling eradicating hose kinking
- The tools ultra-thin profile and light weight enables it to be used in confined areas where access may be restricted
- Required torque is maintained due to the anti-reverse pawl design which prevents the ratchet returning
- Torsion resistant housing and torsion free operation
- Quick-Torc lever design enables rapid cycle
- User friendly design enables fast switching of cassette links
- Two Year Manufacturers Warranty *



		PTLC02	PTLC05	PTLC10	PTLC20	PTLC25	PTLC40
Max. Torque	Nm	2534	5392	10452	16245	22899	40639
	ft/lbs	1870	3979	7714	11989	16900	29992
Min. Torque	Nm	244	489	1017	1724	2247	4064
	ft/lbs	180	361	751	1272	1658	2999
Hex Size (mm)		27 - 50	27 - 65	50 - 90	85 - 115	95 - 135	100 - 155
Head Part No.		PTLCH02	PTLCH05	PTLCH10	PTLCH20	PTLCH25	PTLCH40
Link Part No.		PTLCL02-***	PTLCL05-***	PTLCL10-***	PTLCL20-***	PTLCL25-***	PTLCL40-***
L (mm)		205	251.3	302.5	367	400.5	457.5
L1 (mm)		147	188	233	283	308	364
H1 (mm)		129	163	191	223	246	282
H2 (mm)		100	136	166.5	198	224	265
W1 (mm)		32	41	53	64	70	84
W2 (mm)		50	66	83	99	110	132
R (mm)		41.3	53.8	68.8	85.3	98.8	115.8
Weight (kg)		2.2	5	9.6	16.9	22.9	38

*** Please refer to Hex Links & Reducers information on Pg: 4-5



* Conditions apply - contact ProTorc for more information

MODEL: PTLCL - SERIES

- Manufactured from high strength alloy steel
- Reducers comply with DIN Standard 3121 and 3129

Contact ProTorc for availability of custom and non-standard Hex Links & Reducers



Wrench Model	Hex Link	Hex Size (mm)	Reducer Model					
			Part No.	A/B (mm)	Part No.	A/B (mm)	Part No.	A/B (mm)
PTLCL02	PTLCL02-27	27	-	-	-	-	-	-
	PTLCL02-30	30	-	-	-	-	-	-
	PTLCL02-32	32	PTLCR02-3227	32/27	-	-	-	-
	PTLCL02-36	36	PTLCR02-3627	36/27	PTLCR02-3630	36/30	-	-
	PTLCL02-41	41	PTLCR02-4127	41/27	PTLCR02-4130	41/30	PTLCR02-4132	41/32
	PTLCL02-46	46	PTLCR02-4630	46/30	PTLCR02-4632	46/32	PTLCR02-4636	46/36
	PTLCL02-50	50	PTLCR02-5032	50/32	PTLCR02-5036	50/36	PTLCR02-5041	50/41

Wrench Model	Hex Link	Hex Size (mm)	Reducer Model					
			Part No.	A/B (mm)	Part No.	A/B (mm)	Part No.	A/B (mm)
PTLCL05	PTLCL05-27	27	-	-	-	-	-	-
	PTLCL05-30	30	-	-	-	-	-	-
	PTLCL05-32	32	PTLCR05-3227	32/27	-	-	-	-
	PTLCL05-36	36	PTLCR05-3627	36/27	PTLCR05-3630	36/30	-	-
	PTLCL05-41	41	PTLCR05-4127	41/27	PTLCR05-4130	41/30	PTLCR05-4132	41/32
	PTLCL05-46	46	PTLCR05-4630	46/30	PTLCR05-4632	46/32	PTLCR05-4636	46/36
	PTLCL05-50	50	PTLCR05-5032	50/32	PTLCR05-5036	50/36	PTLCR05-5041	50/41
	PTLCL05-55	55	PTLCR05-5536	55/36	PTLCR05-5541	55/41	PTLCR05-5546	55/46
	PTLCL05-60	60	PTLCR05-6041	60/41	PTLCR05-6046	60/46	PTLCR05-6050	60/50
	PTLCL05-65	65	PTLCR05-6546	65/46	PTLCR05-6550	65/50	PTLCR05-6555	65/55

Wrench Model	Hex Link	Hex Size (mm)	Reducer Model					
			Part No.	A/B (mm)	Part No.	A/B (mm)	Part No.	A/B (mm)
PTLCL10	PTLCL10-50	50	-	-	-	-	-	-
	PTLCL10-55	55	PTLCR10-5541	55/41	PTLCR10-5546	55/46	-	-
	PTLCL10-60	60	PTLCR10-6046	60/46	PTLCR10-6050	60/50	-	-
	PTLCL10-65	65	PTLCR10-6546	65/46	PTLCR10-6550	65/50	PTLCR10-6555	65/55
	PTLCL10-70	70	PTLCR10-7050	70/50	PTLCR10-7055	70/55	PTLCR10-7060	70/60
	PTLCL10-75	75	PTLCR10-7555	75/55	PTLCR10-7560	75/60	PTLCR10-7565	75/65
	PTLCL10-80	80	PTLCR10-8060	80/60	PTLCR10-8065	80/65	PTLCR10-8070	80/70
	PTLCL10-85	85	PTLCR10-8565	85/65	PTLCR10-8570	85/70	PTLCR10-8575	85/75
	PTLCL10-90	90	PTLCR10-9070	90/70	PTLCR10-9075	90/75	PTLCR10-9080	90/80

Wrench Model	Hex Link	Hex Size (mm)	Reducer Model					
			Part No.	A/B (mm)	Part No.	A/B (mm)	Model	A/B (mm)
PTLCL20	PTLCL20-65	65	-	-	-	-	-	-
	PTLCL20-70	70	-	-	-	-	-	-
	PTLCL20-75	75	PTLCR20-7565	75/65	-	-	-	-
	PTLCL20-80	80	PTLCR20-8065	80/65	PTLCR20-8070	80/70	-	-
	PTLCL20-85	85	PTLCR20-8565	85/65	PTLCR20-8570	85/70	PTLCR20-8575	85/75
	PTLCL20-90	90	PTLCR20-9070	90/70	PTLCR20-9075	90/75	PTLCR20-9080	90/80
	PTLCL20-95	95	PTLCR20-9575	95/75	PTLCR20-9580	95/80	PTLCR20-9585	95/85
	PTLCL20-100	100	PTLCR20-10080	100/80	PTLCR20-10085	100/85	PTLCR20-10090	100/90
	PTLCL20-105	105	PTLCR20-10585	105/85	PTLCR20-10590	105/90	PTLCR20-10595	105/95
	PTLCL20-110	110	PTLCR20-11090	110/90	PTLCR20-11095	110/95	PTLCR20-110100	110/100
	PTLCL20-115	115	PTLCR20-11595	115/95	PTLCR20-115100	115/100	PTLCR20-115105	115/105

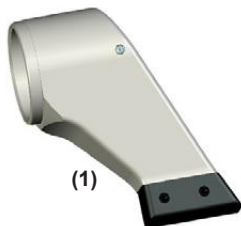
Wrench Model	Hex Link	Hex Size (mm)	Reducer Model					
			Part No.	A/B (mm)	Part No.	A/B (mm)	Part No.	A/B (mm)
PTLCL25	PTLCL25-75	75	-	-	-	-	-	-
	PTLCL25-80	80	-	-	-	-	-	-
	PTLCL25-85	85	PTLCR25-8575	85/75	-	-	-	-
	PTLCL25-90	90	PTLCR25-9075	90/75	PTLCR25-9080	90/80	-	-
	PTLCL25-95	95	PTLCR25-9575	95/75	PTLCR25-9580	95/80	PTLCR25-9585	95/85
	PTLCL25-100	100	PTLCR25-10080	100/80	PTLCR25-10085	100/85	PTLCR25-10090	100/90
	PTLCL25-105	105	PTLCR25-10585	105/85	PTLCR25-10590	105/90	PTLCR25-10595	105/95
	PTLCL25-110	110	PTLCR25-11090	110/90	PTLCR25-11095	110/95	PTLCR25-110100	110/100
	PTLCL25-115	115	PTLCR25-11595	115/95	PTLCR25-115100	115/100	PTLCR25-115105	115/105
	PTLCL25-120	120	PTLCR25-120100	120/100	PTLCR25-120105	120/105	PTLCR25-120110	120/110
	PTLCL25-130	130	PTLCR25-130110	130/110	PTLCR25-130115	130/115	PTLCR25-130120	130/120
	PTLCL25-135	135	PTLCR25-135115	135/115	PTLCR25-135120	135/120	PTLCR25-135130	135/130

Wrench Model	Hex Link	Hex Size (mm)	Reducer Model					
			Part No.	A/B (mm)	Part No.	A/B (mm)	Part No.	A/B (mm)
PTLCL40	PTLCL40-80	80	-	-	-	-	-	-
	PTLCL40-85	85	-	-	-	-	-	-
	PTLCL40-90	90	PTLCR40-9080	90/80	-	-	-	-
	PTLCL40-95	95	PTLCR40-9580	95/80	PTLCR40-9585	95/85	-	-
	PTLCL40-100	100	PTLCR40-10080	100/80	PTLCR40-10085	100/85	PTLCR40-10090	100/90
	PTLCL40-105	105	PTLCR40-10590	105/90	PTLCR40-10595	105/95	PTLCR40-105100	105/100
	PTLCL40-110	110	PTLCR40-11090	110/90	PTLCR40-11095	110/95	PTLCR40-110100	110/100
	PTLCL40-115	115	PTLCR40-11595	115/95	PTLCR40-115100	115/100	PTLCR40-115105	115/105
	PTLCL40-120	120	PTLCR40-120100	120/100	PTLCR40-120105	120/105	PTLCR40-120110	120/110
	PTLCL40-130	130	PTLCR40-130110	130/110	PTLCR40-130115	130/115	PTLCR40-130120	130/120
	PTLCL40-145	145	PTLCR40-145115	145/115	PTLCR40-145120	145/120	PTLCR40-145130	145/130
	PTLCL40-155	155	PTLCR40-155120	155/120	PTLCR40-155130	155/130	PTLCR40-155145	155/145

SUIT SERIES PTSD



ALCO Extension Arms

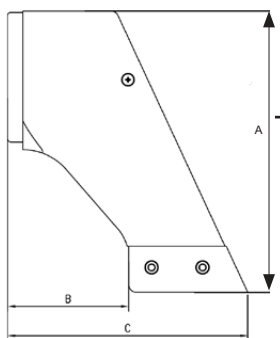


(1)

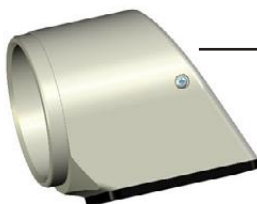
Square Drive Reaction Arms



(2)



Square Drive Reaction Sleeve with Foot



Wrench Model	Part No.		
	300mm	400mm	550mm
PTSD02	162001	162002	162003
PTSD05	162004	162005	162006
PTSD08	162007	162008	162009
PTSD10	162010	062011	162012
PTSD16	162013	162014	162015
PTSD20	162016	162017	162018
PTSD28	162019	162020	162021
PTSD36	162022	162023	162024
PTSD50	162025	162026	162027
PTSD70	162028	162029	162030

Wrench Model	Standard Reaction Arm (1) Part No.	Standard Reaction Arm (1) - mm			Extended Reaction Arm (2) Part No.	Extended Reaction Arm (2) - mm		
		A	B	C		A	B	C
PTSD02	162071	129	47	97	163258	199	75	125
PTSD05	162124	166	73	143	163259	236	106	176
PTSD08	162178	192	83	163	163260	262	114	194
PTSD10	162231	222	95	185	163261	292	126	216
PTSD16	162284	235	94	184	163262	305	124	214
PTSD20	162337	273	94	184	163263	343	142	247
PTSD28	162390	285	130	250	163264	355	166	286
PTSD36	162443	322	118	248	163265	392	149	279
PTSD50	162496	330	128	266	163266	400	158	296
PTSD70	162549	349	140	283	163267	419	170	313

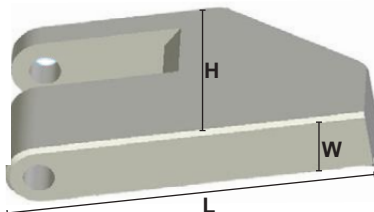
Wrench Model	Part No.
PTSD02	163268
PTSD05	163269
PTSD08	163270
PTSD10	163271
PTSD16	163272
PTSD20	163273
PTSD28	163274
PTSD36	163275
PTSD50	163276
PTSD70	163277

SUIT SERIES PTLC



Low Clearance Extended Reaction Arms

Wrench Model	Part No. (Length 550mm)
PTLC02	163246
PTLC05	163247
PTLC10	163248
PTLC20	163249
PTLC25	163250
PTLC40	163251



Low Clearance Reaction Pad

Wrench Model	Part No.	Dimension (mm)		
		L	W	H
PTLC02	163252	110	26	38
PTLC05	163253	143	32	51
PTLC10	163254	181	45	64
PTLC20	163255	229	64	76
PTLC25	163256	284	83	100
PTLC40	163257	361	111	127

MODEL: TWP55-50-220-01

- Two speed high performance electric pump - 220V, 50Hz
- External adjustable pressure regulator
- Retract side internal relief valve protects tool
- Hand Remote with 3m cord
- Suitable for use with single or double acting tools
- Four tool manifold option available
- Roll cage available
- NATA traceable and certified gauges available



MODEL: RWP55

- Use where air is the preferred power source
- Powerful 2.2Kw motor starts under load
- External adjustable pressure regulator
- Retract side internal relief valve protects tool
- Suitable for use with single and double acting tools
- Safe to use in hazardous or explosive environments
- Four tool manifold option available
- Filter Regulator/ Lubricators available
- Available with NATA traceable and certified gauges
- Roll cage available



Part No	Manifold	Oil Delivery (L/min)	Oil Reservoir (L)	Usable Oil (L)	Overall Width (mm)	Overall Length (mm)	Overall Height (mm)	Weight w/oil (kg)
TWP55-50-220-01	Single Tool	11.5 @ 7 bar 0.9 @ 700 bar	9.5	8.4	435	241	460	34
RWP55	Single Tool	7.6 @ 7 bar 0.9 @ 700 bar	9.5	8.4	450	280	483	44

700 BAR TWIN LINE HYDRAULIC HOSE

- 1/4" high pressure polyurethane hydraulic hose with polyimide core reinforced by two spiral layers and two open spiral layers of high tensile steel
- 4:1 Safety Factor
- 20' (6m) length as standard - custom lengths available upon request
- Fitted with zinc plated 1/4" NPT Male couplings and dust caps
- Equipped with hose guards to increase user safety
- Available with MDG41 compliant burst sleeves (TWH20-VIC-S)



TWH20-VIC



TWH20-VIC-S

Model	Description
	6M Twin line hose with complete with 1/4" couplings
	6M Twin line hose with complete with 1/4" couplings fitted with burst sleeve
	163248

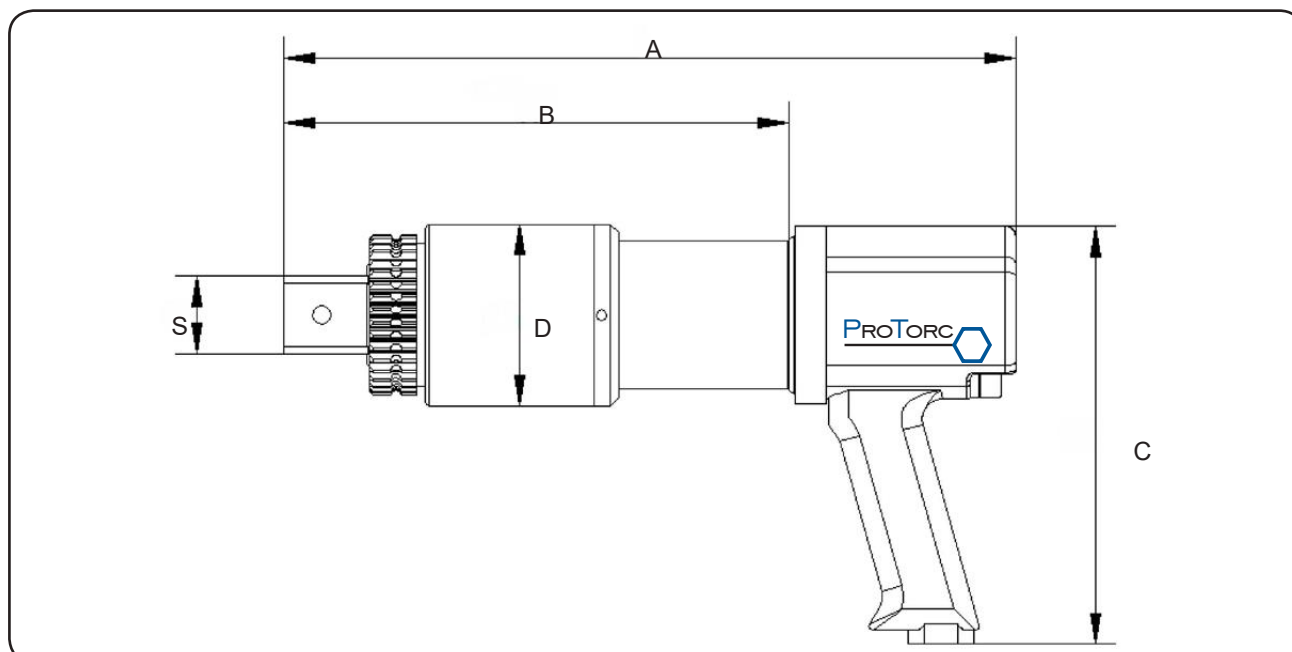
MODEL: PTP - SERIES

- Powered by the reliable Ingersoll Rand (IR) Air Motor
- Torque output is consistently repeatable
- Steel adaption plate enables tool to be used underground
- Heat treated and hardened hex drive for superior longevity
- All models include a FRL & 12' air hose
- Support handle supplied with models PTP35 and above
- Accuracy level of +/- 5%
- Two Year Manufacturers Warranty *



		PTP10	PTP18	PTP22	PTP35	PTP45	PTP55	PTP75	PTP100	PTP120
Max. Torque	Nm	1107	1830	2175	3539	4500	5727	7703	11920	12713
	ft/lbs	816	1350	1604	2610	3319	4224	5681	8792	9377
Min. Torque	Nm	120	174	191	696	1113	1870	1987	3847	4216
	ft/lbs	89	128	141	513	821	1379	1466	2837	3110
Air Pressure (bar)	Min.	1	1	1	1.5	1.5	2	2	2	2
	Max.	6	6	6	6	6	6	6	6	6
Square Drive (S)		3/4"	1"	1"	1"	1"	1 1/2"	1 1/2"	1 1/2"	1 1/2"
A (mm)		285	312	312	346	367	385	392	411	411
B (mm)		175	202	202	236	257	275	282	301	301
C (mm)		195	195	195	195	195	195	195	195	195
D (mm)		74	77	77	81	88	113	120	128	128
Weight (kg) **		5.2	6.2	6.2	7.8	9.4	14.3	15.8	19	19





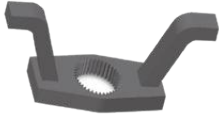
** Does not include reaction arm



* Conditions apply - contact ProTorc for more information

MODEL: PTPR - SERIES

- PTP reaction arms are compatible with large socket sizes
- Reaction arms utilise a slim line design improving versatility & reducing overall tool weight
- Custom and non-standard reaction arms available

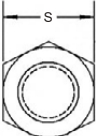
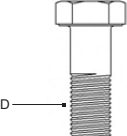
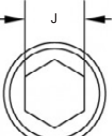
	Standard Angle	Deep Angle	90° Angle	90° Deep	Double Ended Angle
					
PTP10	PTPR10S	PTPR10D	PTPR1090S	PTPR1090D	PTPR10DA
PTP18	PTPR1822S	PTPR1822D	PTPR182290S	PTPR182290D	PTPR1822DA
PTP22					
PTP35	PTPR3545S	PTPR3545D	PTPR354590S	PTPR354590D	PTPR3545DA
PTP45					
PTP55	PTPR55S	PTPR55D	PTPR5590S	PTPR5590D	PTPR55DA
PTP75	PTPR75S	PTPR75D	PTPR7590S	PTPR7590D	PTPR75DA
PTP100					
PTP120	PTPR100120S	PTPR100120D	PTPR10012090S	PTPR10012090D	PTPR100120DA

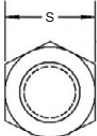
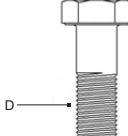
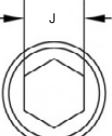
	Single Blank	Double Blank	Sliding	Nose Ext. 12"	Nose Ext. 18"
					
PTP10	PTPR10SB	PTPR10DB	PTPR10SL	PTPR10E12	PTPR10E18
PTP18	PTPR1822SB	PTPR1822DB	PTPR1822SL	PTPR1822E12	PTPR1822E18
PTP22					
PTP35	PTPR3545SB	PTPR3545DB	PTPR3545SL	PTPR3545E12	PTPR3545E18
PTP45					
PTP55	PTPR55SB	PTPR55DB	Contact ProTorc for larger sliding reaction arms	PTPR55E12	PTPR55E18
PTP75	PTPR75SB	PTPR75DB		PTPR75E12	PTPR75E18
PTP100	PTPR100120SB	PTPR100120DB		PTPR100120E12	PTPR100120E18
PTP120					

Part Number	Tool Model	Min CTRS (mm)	Max CTRS (mm)
PTPR10SL	PTP10	60	180
PTPR1822SL	PTP18	80	260
	PTP22		
PTPR3545SL	PTP35	80	180
	PTP45		

Pressure (Bar)	Pressure (PSI)	PTSD02 Torque (Nm)	PTSD05 Torque (Nm)	PTSD08 Torque (Nm)	PTSD10 Torque (Nm)	PTSD16 Torque (Nm)	PTSD20 Torque (Nm)	PTSD28 Torque (Nm)	PTSD36 Torque (Nm)	PTSD50 Torque (Nm)	PTSD70 Torque (Nm)
70	1015	164	433	742	1015	1509	1940	2504	3309	4741	6925
80	1160	187	495	848	1160	1724	2218	2862	3782	5419	7914
90	1305	211	557	954	1305	1940	2495	3219	4254	6096	8903
100	1450	234	619	1060	1450	2155	2772	3577	4727	6773	9892
110	1595	258	681	1166	1584	2373	3040	3938	5245	7451	10882
120	1740	282	743	1272	1728	2591	3307	4299	5763	8128	11871
130	1885	305	805	1378	1872	2810	3575	4661	6282	8806	12860
140	2031	329	866	1484	2016	3028	3842	5022	6800	9483	13849
150	2176	353	928	1590	2160	3246	4110	5383	7318	10160	14839
160	2321	378	990	1696	2304	3468	4378	5778	7817	10838	15828
170	2466	402	1052	1802	2448	3690	4645	6173	8315	11515	16817
180	2611	427	1114	1908	2592	3913	4913	6567	8814	12192	17806
190	2756	451	1176	2014	2736	4135	5180	6962	9312	12870	18796
200	2901	476	1238	2120	2880	4357	5448	7357	9811	13547	19785
210	3046	503	1300	2226	3045	4576	5739	7737	10319	14224	20774
220	3191	530	1361	2332	3190	4796	6030	8118	10827	14902	21763
230	3336	558	1423	2438	3335	5015	6320	8498	11334	15579	22753
240	3481	585	1485	2544	3480	5235	6611	8879	11842	16256	23742
250	3626	612	1547	2650	3625	5454	6902	9259	12350	16934	24731
260	3771	638	1609	2756	3770	5675	7164	9656	12879	17611	25720
270	3916	664	1671	2862	3915	5896	7427	10054	13407	18288	26709
280	4061	690	1733	2968	4060	6116	7689	10451	13936	18966	27699
290	4206	716	1795	3074	4205	6337	7952	10849	14464	19643	28688
300	4351	742	1857	3180	4350	6558	8214	11246	14993	20320	29677
310	4496	768	1918	3286	4549	6776	8481	11604	15464	20998	30666
320	4641	793	1980	3392	4696	6994	8749	11963	15936	21675	31656
330	4786	819	2042	3498	4843	7213	9016	12321	16407	22352	32645
340	4931	844	2104	3604	4990	7431	9284	12680	16879	23030	33634
350	5076	870	2166	3710	5136	7649	9551	13038	17350	23707	34623
360	5221	896	2228	3816	5283	7868	9798	13429	17844	24384	35613
370	5366	922	2290	3922	5430	8088	10045	13820	18337	25062	36602
380	5511	948	2352	4028	5577	8307	10291	14211	18831	25739	37591
390	5656	974	2414	4134	5723	8527	10538	14602	19324	26417	38580
400	5802	1000	2475	4240	5870	8746	10785	14993	19818	27094	39570
410	5947	1026	2537	4346	6050	8964	11064	15362	20312	27771	40559
420	6092	1052	2599	4452	6197	9182	11343	15731	20805	28449	41548
430	6237	1077	2661	4558	6345	9401	11623	16099	21299	29126	42537
440	6382	1103	2723	4664	6492	9619	11902	16468	21792	29803	43527
450	6527	1129	2785	4770	6640	9837	12181	16837	22286	30481	44516
460	6672	1154	2847	4876	6787	10054	12527	17221	22780	31158	45505
470	6817	1180	2909	4982	6935	10271	12872	17606	23273	31835	46494
480	6962	1205	2971	5088	7082	10488	13218	17990	23767	32513	47484
490	7107	1231	3032	5194	7230	10705	13563	18375	24260	33190	48473
500	7252	1256	3094	5300	7378	10922	13909	18759	24754	33867	49462
510	7397	1282	3156	5406	7599	11134	14158	19143	25248	34545	50451
520	7542	1308	3218	5512	7748	11345	14407	19528	25741	35222	51440
530	7687	1333	3280	5618	7897	11557	14657	19912	26235	35899	52430
540	7832	1359	3342	5724	8046	11768	14906	20297	26728	36577	53419
550	7977	1385	3404	5830	8195	11980	15155	20681	27222	37254	54408
560	8122	1411	3466	5936	8344	12189	15414	21065	27716	37931	55397
570	8267	1437	3527	6042	8493	12398	15672	21450	28209	38609	56387
580	8412	1462	3589	6148	8642	12607	15931	21834	28703	39286	57376
590	8557	1488	3651	6254	8791	12816	16189	22219	29196	39963	58365
600	8702	1514	3713	6360	8940	13025	16448	22603	29690	40641	59354
610	8847	1539	3775	6466	9089	13237	16726	22987	30184	41318	60344
620	8992	1564	3837	6572	9238	13449	17004	23372	30677	41995	61333
630	9137	1590	3899	6678	9387	13660	17281	23756	31171	42673	62322
640	9282	1615	3961	6784	9536	13872	17559	24141	31664	43350	63311
650	9427	1640	4023	6890	9685	14084	17837	24525	32158	44028	64301
660	9572	1664	4084	6996	9834	14285	18151	24909	32652	44705	65290
670	9718	1688	4146	7102	9983	14486	18466	25294	33145	45382	66279
680	9863	1712	4208	7208	10132	14688	18780	25678	33639	46060	67268
690	10008	1736	4270	7314	10281	14889	19095	26063	34132	46737	68258
700	10153	1760	4332	7420	10430	15090	19409	26447	34626	47414	69247

Pressure (Bar)	Pressure (PSI)	PTLC02 Torque (Nm)	PTLC05 Torque (Nm)	PTLC10 Torque (Nm)	PTLC20 Torque (Nm)	PTLC25 Torque (Nm)	PTLC40 Torque (Nm)
70	1015	244	489	1017	1724	2247	4064
80	1160	278	558	1162	1991	2568	4645
90	1305	313	628	1308	2257	2889	5225
100	1450	348	698	1453	2523	3210	5806
110	1595	384	774	1595	2789	3544	6386
120	1740	421	851	1738	3055	3878	6967
130	1885	457	927	1880	3322	4212	7547
140	2031	494	1004	2023	3588	4546	8128
150	2176	530	1080	2165	3854	4880	8709
160	2321	567	1162	2314	4091	5212	9289
170	2466	604	1244	2463	4328	5544	9870
180	2611	641	1326	2612	4566	5876	10450
190	2756	678	1408	2761	4803	6208	11031
200	2901	715	1490	2910	5040	6540	11611
210	3046	749	1568	3052	5284	6871	12192
220	3191	784	1646	3194	5528	7202	12773
230	3336	818	1724	3336	5772	7532	13353
240	3481	853	1802	3478	6016	7863	13934
250	3626	887	1880	3620	6260	8194	14514
260	3771	923	1957	3758	6504	8517	15095
270	3916	958	2034	3896	6748	8841	15675
280	4061	994	2110	4033	6992	9164	16256
290	4206	1029	2187	4171	7236	9488	16837
300	4351	1065	2264	4309	7480	9811	17417
310	4496	1103	2343	4467	7622	10153	17998
320	4641	1141	2422	4625	7763	10494	18578
330	4786	1179	2502	4784	7905	10836	19159
340	4931	1217	2581	4942	8046	11177	19739
350	5076	1255	2660	5100	8188	11519	20320
360	5221	1292	2735	5246	8418	11867	20901
370	5366	1329	2810	5392	8648	12215	21481
380	5511	1366	2885	5538	8879	12563	22062
390	5656	1403	2960	5684	9109	12911	22642
400	5802	1440	3035	5830	9339	13259	23223
410	5947	1478	3123	6004	9569	13577	23803
420	6092	1517	3211	6178	9799	13895	24384
430	6237	1555	3299	6353	10030	14214	24965
440	6382	1594	3387	6527	10260	14532	25545
450	6527	1632	3475	6701	10490	14850	26126
460	6672	1669	3570	6846	10720	15186	26706
470	6817	1706	3665	6991	10950	15523	27287
480	6962	1744	3761	7135	11181	15859	27867
490	7107	1781	3856	7280	11411	16196	28448
500	7252	1818	3951	7425	11641	16532	29029
510	7397	1855	4017	7588	11871	16863	29609
520	7542	1891	4083	7751	12101	17194	30190
530	7687	1928	4148	7914	12332	17526	30770
540	7832	1964	4214	8077	12562	17857	31351
550	7977	2001	4280	8240	12792	18188	31931
560	8122	2032	4354	8378	13022	18476	32512
570	8267	2063	4428	8516	13252	18764	33093
580	8412	2094	4502	8654	13483	19053	33673
590	8557	2125	4576	8792	13713	19341	34254
600	8702	2156	4650	8930	13943	19629	34834
610	8847	2194	4721	9085	14173	19956	35415
620	8992	2232	4792	9240	14403	20283	35995
630	9137	2270	4863	9396	14634	20610	36576
640	9282	2308	4934	9551	14864	20937	37157
650	9427	2346	5005	9706	15094	21264	37737
660	9572	2384	5082	9855	15324	21591	38318
670	9718	2421	5160	10004	15554	21918	38898
680	9863	2459	5237	10154	15785	22245	39479
690	10008	2496	5315	10303	16015	22572	40059
700	10153	2534	5392	10452	16245	22899	40639

		
Hexagon Size (A/F) S (mm)	Thread Size D (mm)	Int. Hexagon Size J (mm)
17	M10	8
19	M12	10
22	M14	12
24	M16	14
27	M18	14
30	M20	17
34	M22	17
36	M24	19
41	M27	19
46	M30	22
50	M33	24
55	M36	27
60	M39	27 (30)
65	M42	32
70	M45	-
75	M48	36
80	M52	36
85	M56	41
90	M60	46
95	M64	50
100	M68	55
105	M72	60
110	M76	65
115	M80	70
120	M85	70 (75)
130	M90	-
135	M95	80
145	M100	-
150	M105	-
155	M110	-
165	M115	-
170	M120	-
180	M125	-
185	M130	-
200	M140	-
210	M150	-

		
Hexagon Size (A/F) S (inch)	Thread Size D (inch)	Int. Hexagon Size J (inch)
1 - 1/16	5/8	1/2
1 - 1/4	3/4	5/8
1 - 7/16	7/8	3/4
1 - 5/8	1	3/4
1 - 13/16	1 - 1/8	7/8
2	1 - 1/4	7/8
2 - 3/16	1 - 3/8	1
2 - 3/8	1 - 1/2	1
2 - 9/16	1 - 5/8	-
2 - 3/4	1 - 3/4	1 - 1/4
2 - 15/16	1 - 7/8	1 - 3/8
3	2	1 - 1/2
3 - 1/8	2	1 - 5/8
3 - 3/8	2 - 1/4	1 - 3/4
3 - 1/2	2 - 1/4	1 - 3/4
3 - 3/4	2 - 1/2	1 - 3/4
3 - 7/8	2 - 1/2	1 - 7/8
4 - 1/8	2 - 3/4	2
4 - 1/4	2 - 3/4	2
4 - 5/8	3	2 - 1/4
5	3 - 1/4	2 - 1/4

- Use values as a guide only. Always check with the manufacturer of the bolt or equipment before use
- Refer to "Bolt & Nut Pre-tightening Force Chart" to determine the max torque of wrench required



Strength Grade		8.8		10.9		12.9	
Bolt	A/F (mm)	Torque		Torque		Torque	
		lbs.ft	Nm	lbs.ft	Nm	lbs.ft	Nm
M14	22	101	137	122	165	166	225
M16	24	152	206	182	247	268	363
M18	27	210	284	252	341	354	480
M20	30	297	402	420	569	499	677
M22	34	398	539	565	765	672	911
M24	36	506	686	724	981	868	1176
M27	41	759	1029	1086	1472	1302	1764
M30	46	904	1225	1448	1962	1736	2352
M33	50	1085	1470	1520	2060	1808	2450
M36	55	1302	1764	1810	2453	2170	2940
M39	60	1591	2156	2172	2943	2676	3626
M42	65	2025	2744	2824	3826	3399	4606
M45	70	2314	3136	3258	4415	3978	5390
M48	75	2893	3920	4127	5592	4918	6664
M52	80	3472	4704	4851	6573	6148	8330
M56	85	4412	5978	6227	8437	7594	10290
M60	90	5714	7742	7964	10791	9764	13230
M64	95	6509	8820	8855	11998	11066	14994
M68	100	7956	10780	10070	13645	12585	17053
M72	105	9330	12642	11459	15527	14321	19405
M76	110	10849	14700	13021	17644	16273	22050
M80	115	13380	18130	14426	19547	18029	24429
M85	120	16273	22050	15625	21172	19527	26459
M90	130	18081	24500	18751	25407	23433	31752
M100	145	20251	27440	24306	32935	30376	41160
M110	155	24156	32732	28994	39287	36235	49098
M120	170	29364	39788	35244	47756	44046	59682

- Use values as a guide only. Always check with the manufacturer of the bolt or equipment before use
- Figures represent the max torque of the bolt - the tightening torque is 80-90% of chart figures
- The recommended loosening torque is up to 150% of the tightening torque
- Load Sockets must comply with the appropriate standards e.g., DIN3121, DIN3129
- The above table shows German Standard (DIN) figures



WARRANTY POLICY

Boss Hydraulics offers lifetime warranty (lifetime is defined by when the product is no longer fit for purpose due to standard wear) on their 700 bar range of products against manufacturer's defects and workmanship. This warranty does not cover parts that have been misused or used for a purpose other than which it was intended. General wear and tear of any products is also not covered under this warranty. Motors and batteries are warranted separately according to the original manufacturer's warranty.

Warranty may also be void if:

- Modifications are made to the product
- The product has been repaired by an unauthorised repair centre
- Non recommended fluids are used

LIABILITY OF SUPPLIER

Total liability held by Boss Hydraulics with regards to the warranty of products against defects is limited.

Boss Hydraulics will have the option to either repair, replace or refund the product at their sole discretion. Boss Hydraulics will not be liable for any direct, indirect, consequential or economic loss or incidental damages of any kind as a result of any act or omission by Boss Hydraulics.

All transport costs to/from Boss Hydraulics or an authorised agent will be at the product owner's expense.

HOW TO CLAIM

If you believe your Boss Hydraulic product is defective and warranty applies please contact Boss Hydraulics or an authorised agent.

To fully determine the validity of a warranty claim the product will/may be required to be returned to Boss Hydraulics or an authorised agent.

All products returned must be accompanied by both return authorisation and proof of purchase.

LOW PRESSURE HYDRAULIC POWER UNITS & AG CYLINDERS

BOSS

HYDRAULICS

- Dual ported UN-Oring threads
- Hard chrome plated piston rod - AISI K1045 material
- CDSM honed barrel
- Range of bore sizes available (1.5-5")



- AC & DC Power units
- 12/24 volt
- Multiple tank sizes available
- Full range of valve options

- Mobile valves
- 1 - 8 spool design available
- Multiple spool options
- Comes with carry over port





- HYDRAULIC TOOLS & EQUIPMENT -
- OVER 35 YEARS EXPERIENCE -
- STEEL & ALUMINIUM CYLINDERS -
- CUSTOMISED CYLINDERS UP TO 2000T -
- ELECTRIC, AIR & HAND PUMPS -
- PORTABLE JACKS -
- MAINTENANCE KITS -
- HYDRAULIC PULLERS -
- COMPLETE RANGE OF ACCESSORIES -
- AFTER SALES CUSTOMER SUPPORT -
- LIFETIME WARRANTY* -

* Conditions Apply



Phone: 1300 731 775
Int: (61) 7 3277 1775
Fax: (61) 7 3277 3994
Email: sales@titantools.com.au

4/8 Willingdon Street
Archerfield
Queensland, Australia 4108

www.titantools.com.au