



- AG STYLE CYLINDERS -
- DC POWER PACKS -
- MOBILE VALVES -



BLDP1-18

**SUPERIOR TORQUE AND TENSION SOLUTIONS**

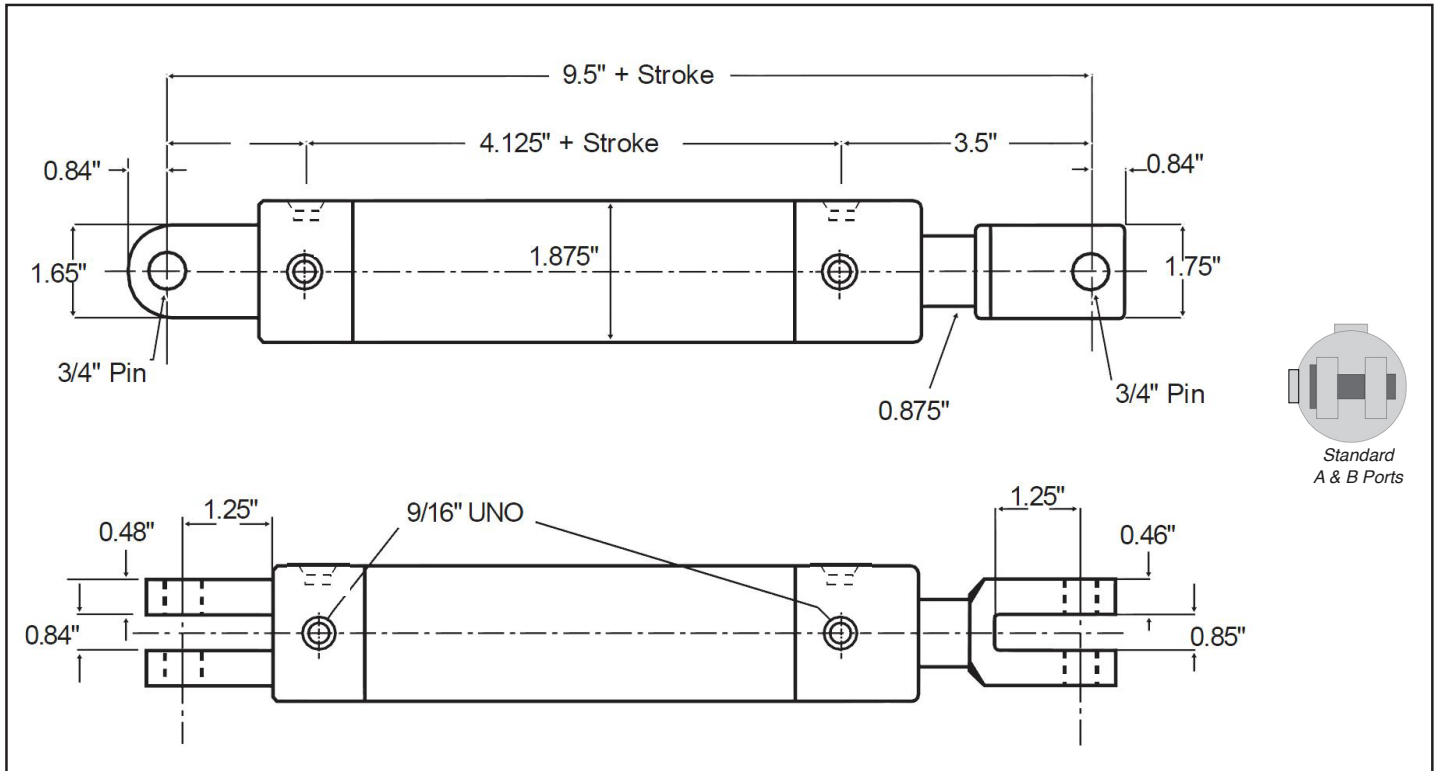
**FEATURES & BENEFITS**

1. *Dual Ported UN-Oring threads - This great innovation provides you with 2 ports at the rod end and 2 ports at the rear clevis end of the cylinder. No more stocking both A & B ported cylinders*
2. *Hard Chrome Plated Piston Rod - AISI K1045 Material.*
3. *CDSM Honed Barrel.*
4. *Rod Gland manufactured from ASTM A536 ductile iron*
5. *Steel 2 Piece Piston - O-ring seal to rod gives no leak situation.*
6. *Rod End Clevis - Cast iron. Rear clevis mount - Cast Steel.*
7. *Cylinders supplied with port sealing plugs & shipped in plastic bag - this prevents dirt ingress during transportation & storage.*
8. *All cylinders are 100% pre-pressure tested. Providing the customer full confidence in purchase.*
9. *Genuine Hallite Brand Seals - Available all over Australia!*
  - 5 Piece Type Piston Seal
  - Hallite Twin Lip Rod Seal
  - Hallite Type 520 (Poly) Rod Wiper
  - Tube & Piston Id O-rings made from nitrile rubber



## BORE SIZE - 1.5 INCH

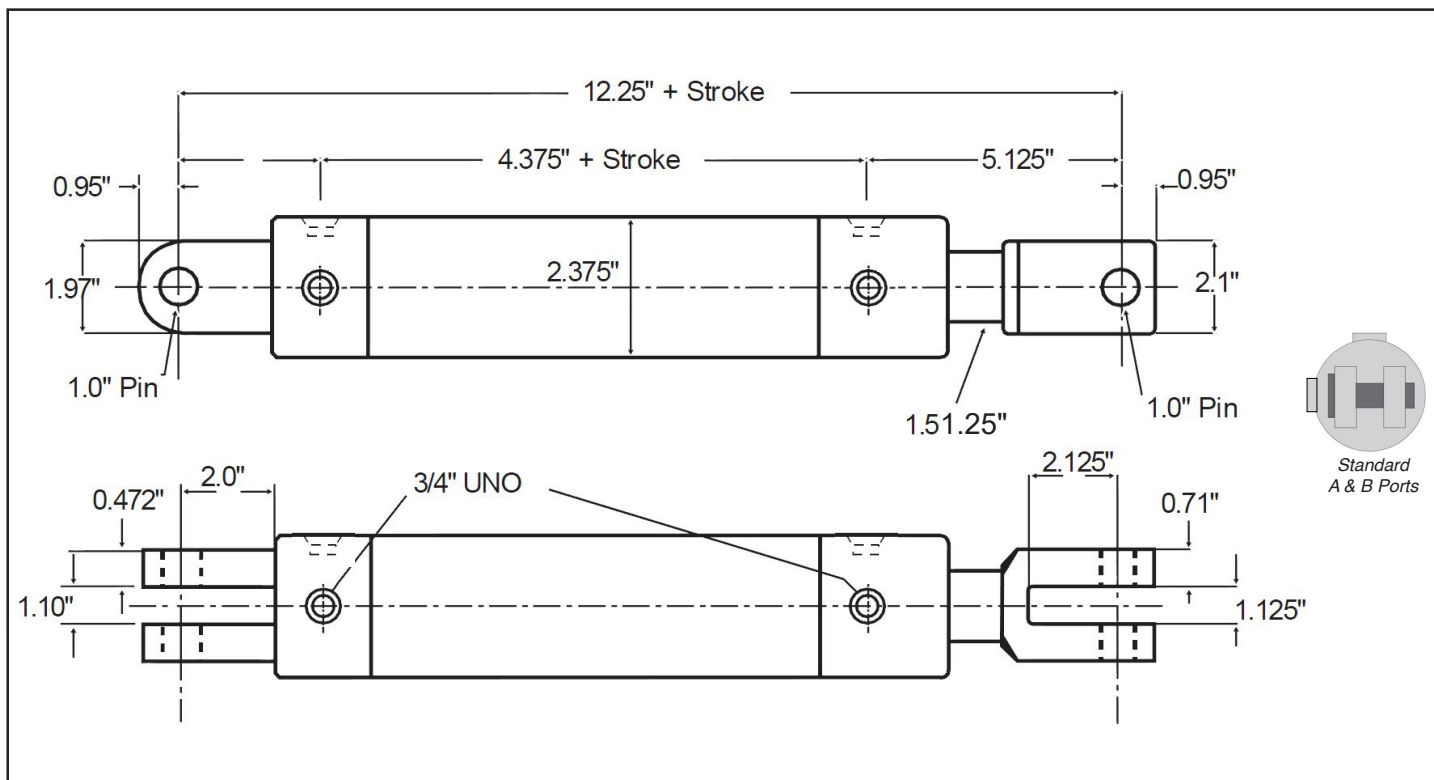
Max Pressure 3500 PSI (240 Bar)



Part No.	Stroke (Inch)	Pin to Pin "Closed" (Inch)	Rod (Inch)	Pin (Inch)	Ports (Inch)	Weight (kg)	List Price
AG1502AB	2	9.5 + STROKE	0.875	0.75	9/16 UNO	3.5	\$349.00
AG1504AB	4					4	\$349.00
AG1506AB	6					4.5	\$349.00
AG1508AB	8					5	\$349.00
AG1510AB	10					5.5	\$366.00
AG1512AB	12					6	\$383.00
AG1516AB	16					7	\$417.00
AG1518AB	18					7.5	\$434.00
AG1520AB	20					8	\$451.00
AG1524AB	24					9	\$485.00
AG1530AB	30					10.5	\$512.00
AG1536AB	36					12	\$562.00
AG1548AB	48					18	\$660.00

## BORE SIZE - 2 INCH

Max Pressure **3500 PSI (240 Bar)**

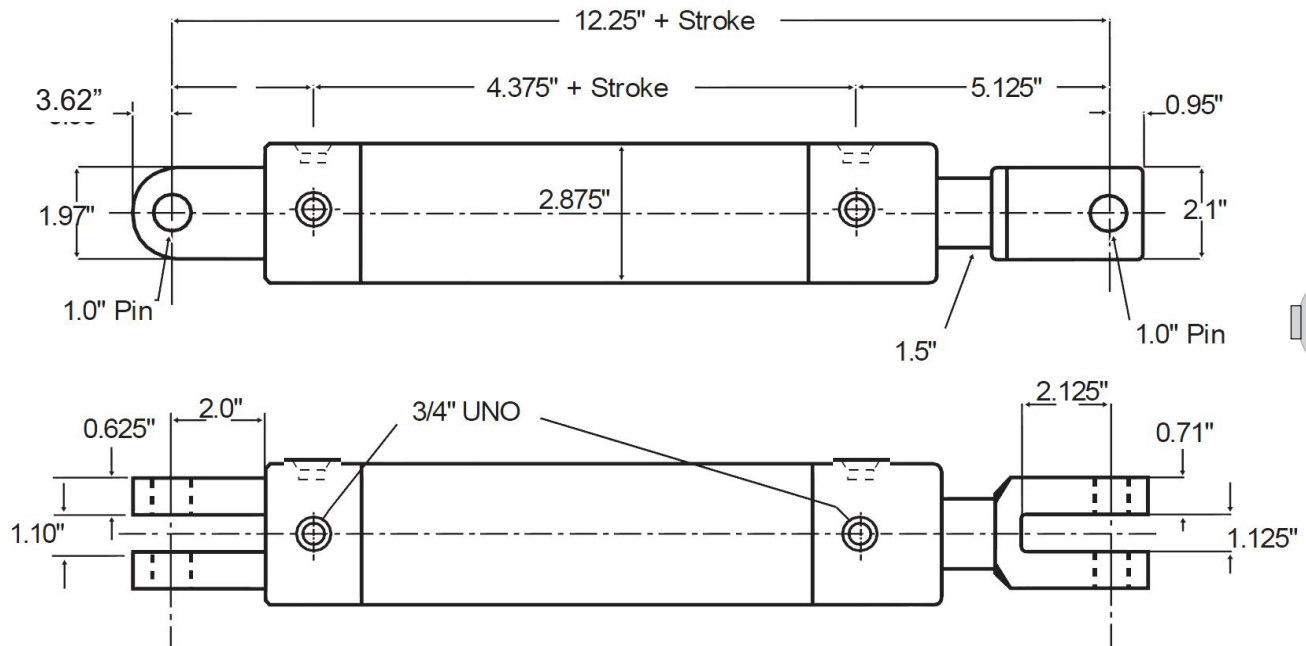


Part No.	Stroke (Inch)	Pin to Pin "Closed" (Inch)	Rod (Inch)	Pin (Inch)	Ports (Inch)	Weight (kg)	List Price
AG2002AB	2	12.25 + STROKE	1.25	1	3/4 UNO	7.5	\$329.00
AG2004AB	4					8	\$329.00
AG2006AB	6					9	\$329.00
AG2008AB	8					10	\$329.00
AG2010AB	10					10.5	\$347.00
AG2012AB	12					11.5	\$365.00
AG2014AB	14					12	\$385.00
AG2016AB	16					13	\$403.00
AG2018AB	18					14	\$418.00
AG2020AB	20					14.5	\$446.00
AG2022AB	22					15.5	\$475.00
AG2024AB	24					16	\$475.00
AG2026AB	26					17	\$542.00
AG2028AB	28					18	\$542.00
AG2030AB	30					19	\$542.00
AG2036AB	36					21	\$584.00
AG2042AB	42					23.5	\$712.00
AG2048AB	48					26	\$712.00



## BORE SIZE - 2.5 INCH

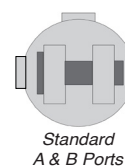
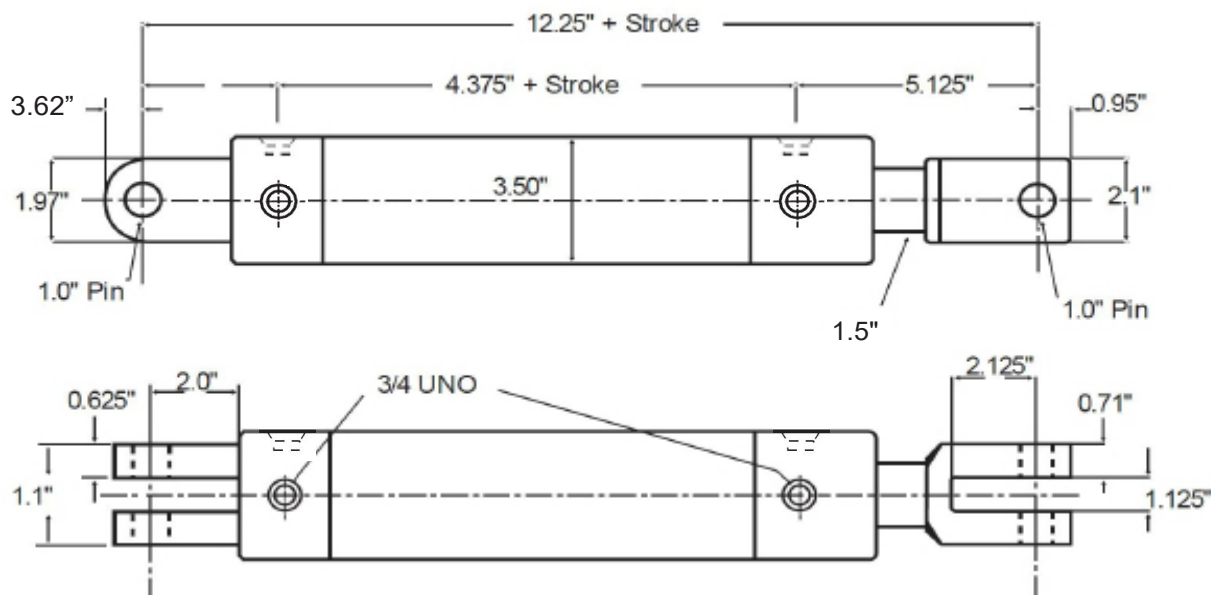
Max Pressure 3500 PSI (240 Bar)



Part No.	Stroke (Inch)	Pin to Pin "Closed" (Inch)	Rod (Inch)	Pin (Inch)	Ports (Inch)	Weight (kg)	List Price
AG2504AB	4	12.25 + STROKE	1.5	1	3/4 UNO	9	\$331.00
AG2506AB	6					10	\$331.00
AG2508AB	8					11	\$331.00
AG2510AB	10					12	\$349.00
AG2512AB	12					13	\$367.00
AG2514AB	14					14	\$385.00
AG2516AB	16					15	\$403.00
AG2518AB	18					15	\$421.00
AG2520AB	20					16	\$448.00
AG2522AB	22					17	\$475.00
AG2524AB	24					18	\$475.00
AG2526AB	26					19	\$509.00
AG2528AB	28					20	\$542.00
AG2530AB	30					21	\$542.00
AG2536AB	36					23	\$586.00
AG2542AB	42					26	\$714.00
AG2548AB	48					29	\$714.00

## BORE SIZE - 3 INCH

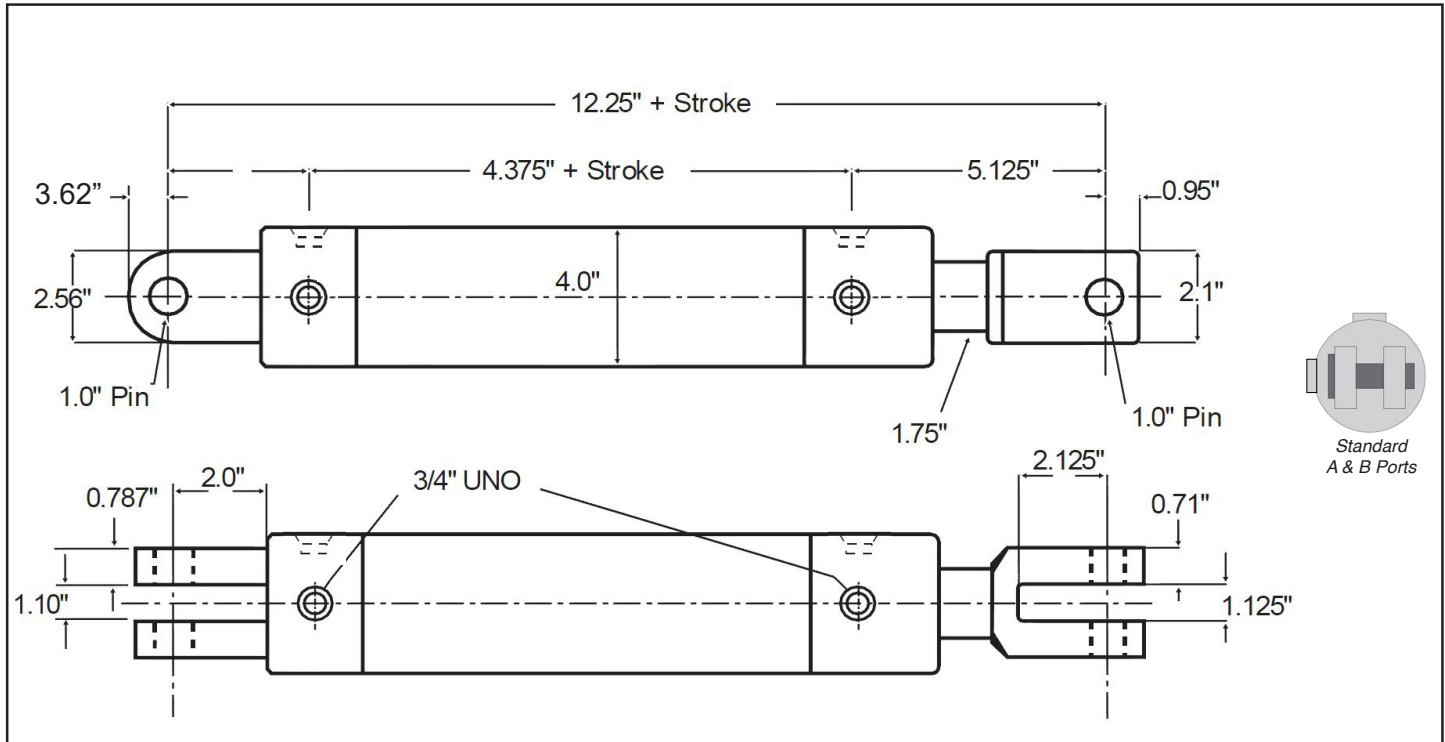
Max Pressure 3250 PSI (224 Bar)



Part No.	Stroke (Inch)	Pin to Pin "Closed" (Inch)	Rod (Inch)	Pin (Inch)	Ports (Inch)	Weight (kg)	List Price
AG3004AB	4	12.25 + STROKE	1.5	1	3/4 UNO	12	\$387.00
AG3006AB	6					13	\$387.00
AG3008AB	8					14	\$387.00
AG3010AB	10					15	\$408.00
AG3012AB	12					17	\$430.00
AG3014AB	14					18	\$494.00
AG3016AB	16					19	\$494.00
AG3018AB	18					20	\$494.00
AG3020AB	20					21	\$557.00
AG3022AB	22					22	\$557.00
AG3024AB	24					23	\$557.00
AG3026AB	26					24	\$621.00
AG3028AB	28					26	\$621.00
AG3030AB	30					27	\$621.00
AG3036AB	36					30	\$685.00
AG3042AB	42					33	\$813.00
AG3048AB	48					37	\$813.00

## BORE SIZE - 3.5 INCH

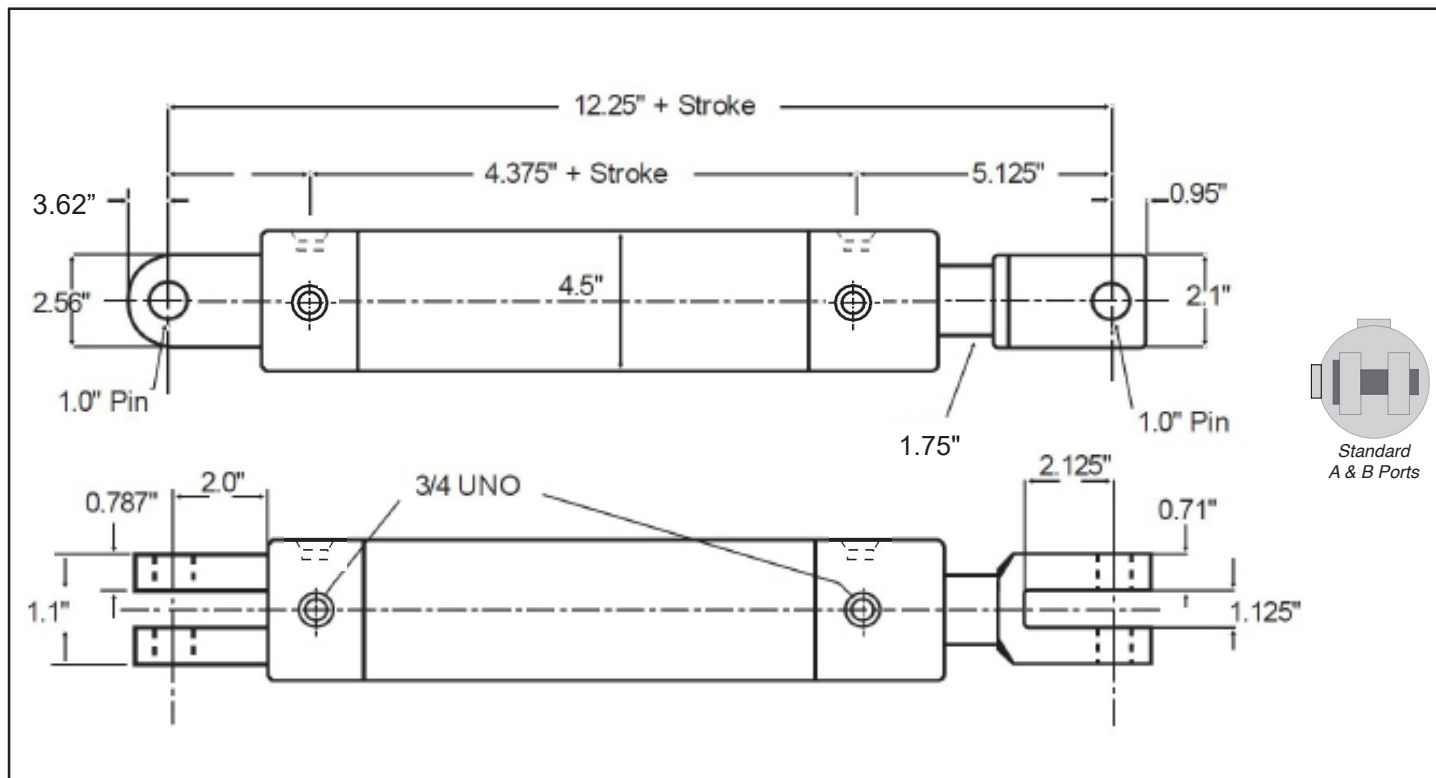
Max Pressure 3250 PSI (224 Bar)



Part No.	Stroke (Inch)	Pin to Pin "Closed" (Inch)	Rod (Inch)	Pin (Inch)	Ports (Inch)	Weight (kg)	List Price
AG3506AB	6	12.25 + STROKE	1.75	1	3/4 UNO	22	\$498.00
AG3508AB	8					23	\$498.00
AG3510AB	10					25	\$531.00
AG3512AB	12					26	\$564.00
AG3514AB	14					27	\$597.00
AG3516AB	16					29	\$630.00
AG3518AB	18					30	\$663.00
AG3520AB	20					32	\$696.00
AG3524AB	24					34	\$762.00
AG3530AB	30					39	\$861.00
AG3532AB	32					41	\$960.00
AG3536AB	36					43	\$960.00
AG3542AB	42					47	\$1057.00
AG3548AB	48					51	\$1154.00

## BORE SIZE - 4 INCH

Max Pressure 3000 PSI (206 Bar)

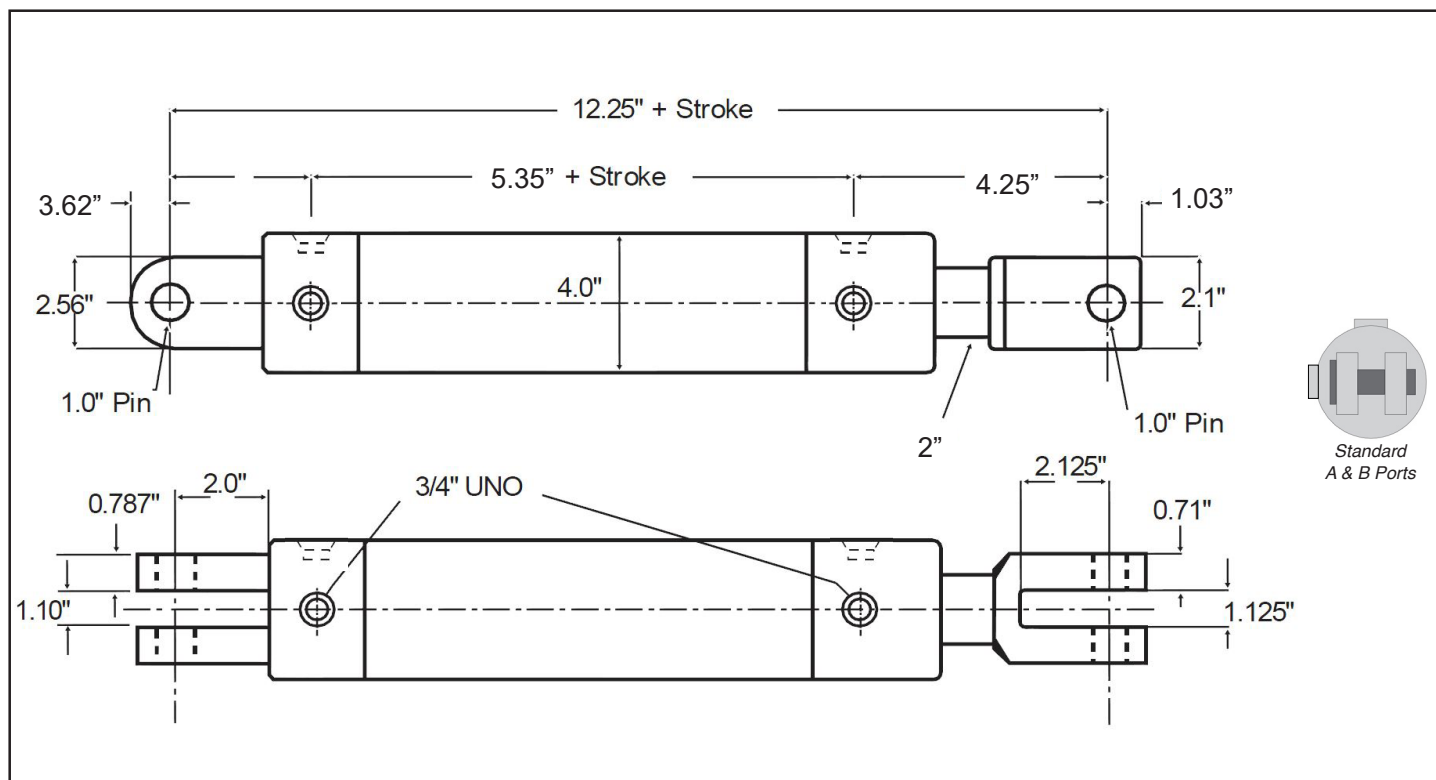


Part No.	Stroke (Inch)	Pin to Pin "Closed" (Inch)	Rod (Inch)	Pin (Inch)	Ports (Inch)	Weight (kg)	List Price
AG4008AB	8	12.25 + STROKE	1.75	1	3/4 UNO	23	\$587.00
AG4012AB	12					26	\$665.00
AG4016AB	16					29	\$743.00
AG4018AB	18					30	\$782.00
AG4020AB	20					32	\$821.00
AG4024AB	24					35	\$898.00
AG4028AB	28					28	\$1015.00
AG4030AB	30					39	\$1015.00
AG4036AB	36					44	\$1133.00
AG4042AB	42					48	\$1247.00
AG4048AB	48					53	\$1361.00



## BORE SIZE - 5 INCH

Max Pressure 3000 PSI (206 Bar)



Part No.	Stroke (Inch)	Pin to Pin "Closed" (Inch)	Rod (Inch)	Pin (Inch)	Ports (Inch)	Weight (kg)	List Price
AG5004AB	4	12.25 + STROKE	2	1	3/4 UNO	29	P.O.A
AG5006AB	6					31	P.O.A
AG5008AB	8					34	P.O.A
AG5010AB	10					36	P.O.A
AG5012AB	12					38	P.O.A
AG5024AB	24					52	P.O.A
AG5028AB	28					57	P.O.A
AG5030AB	30					59	P.O.A

## SEAL KITS

Part No.	Bore Size (Inch)	Rod Size (Inch)	List Price
BSK-15087	1.5	0.875	\$48.00
BSK-20125	2	1.25	\$52.00
BSK-2515	2.5	1.5	\$60.00
BSK-3015	3	1.5	\$60.00
BSK-35175	3.5	1.75	\$68.00
BSK-40175	4	1.75	\$80.00
BSK-5020	5	2.00	\$80.00



## CYLINDER PINS

Part No.	Pin Size (Inch)	Suits Bore (Inch)	List Price
B-PIN0.75	0.75	1.5	\$10.00
B-PIN1.0	1	2, 2.5, 3, 3.5, 4, 5	\$10.00



## ORDERING CODE

*	OCV	B	U	*
	S = Single D = Double	Banjo Mount	For UNO Port	09 = 9/16" 12 = 3/4"

Model	Description	List Price
S08CVBU-12	Single Counter balance valve	\$440.00
D08CVBU-12	Double Counter balance valve	\$540.00

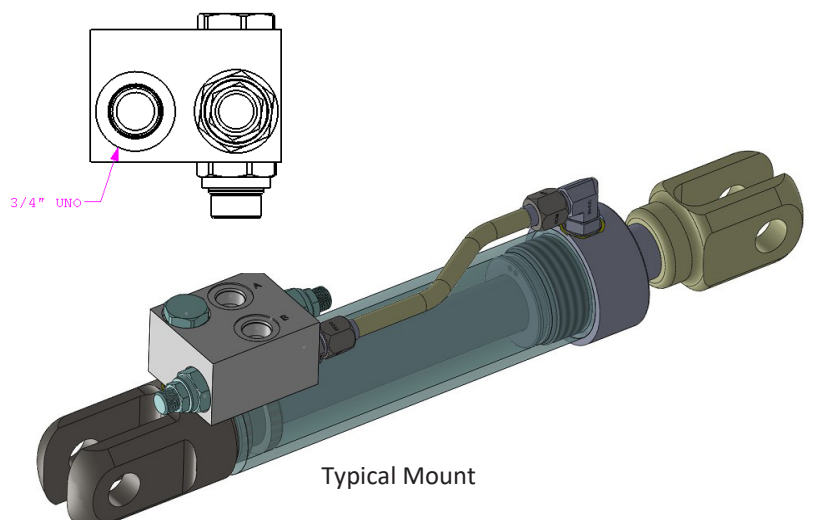
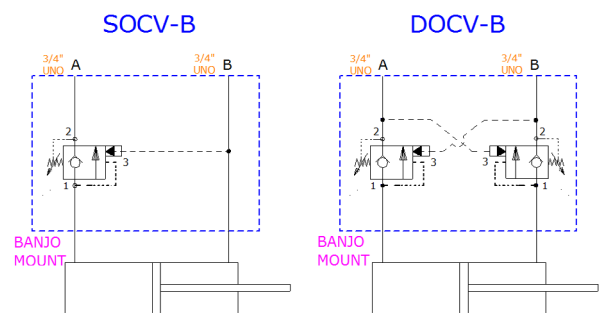
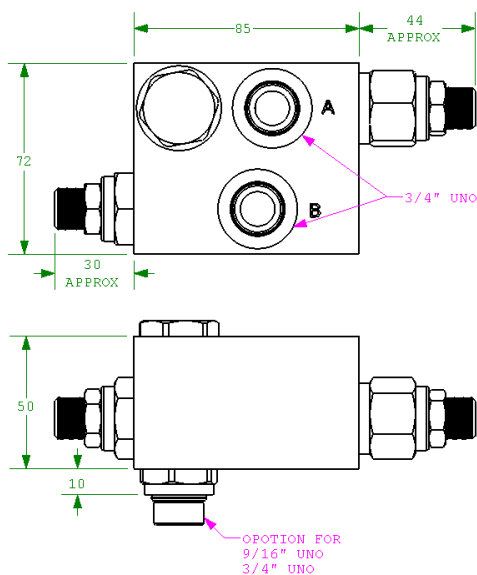
## Included Parts

- Counter Balance Valves
- Banjo Bolts (set)

## FEATURES AND BENEFITS

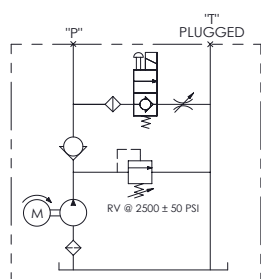
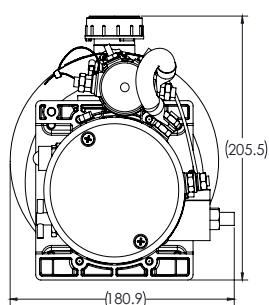
- Banjo mount directly on the cylinder
- Material - Alloy - 6061
- Surface Treatment - Zinc Plated
- Max Working Pressure - 210 Bar
- Max Flow - Approximately 45 Litre / Min
- Port Sizes - A & B = 3/4" UNO
- Sun Cartridge Valve is Standard (CBCG-LJN)
- Can be supplied with Command Control Valve on request
- Optional ports & sizes are available on request
- Optional elbow and tube assembly available on request

## SPECIFICATIONS

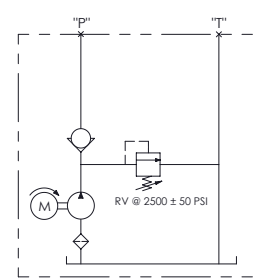
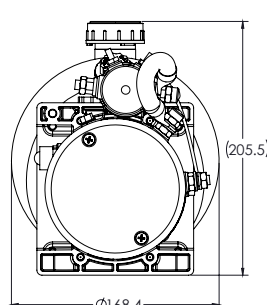


## FEATURES AND BENEFITS

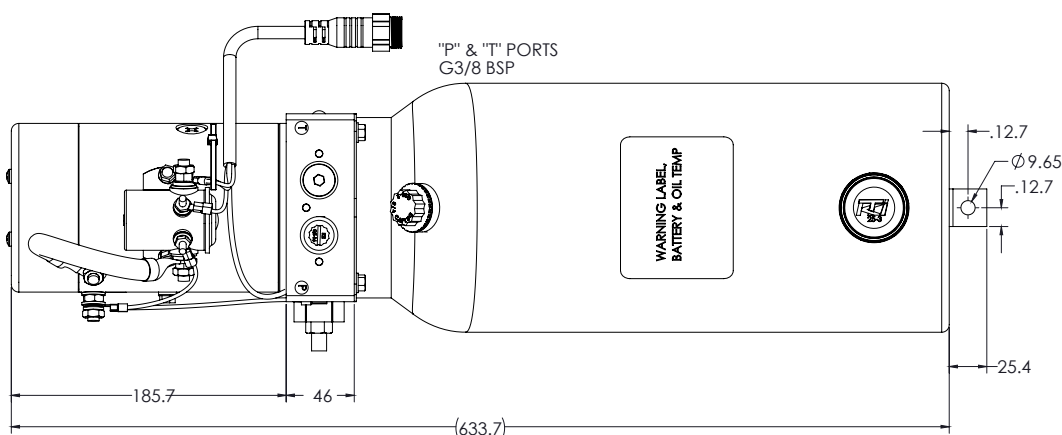
- Off the shelf products
- Extended duty motors
- 200 amp continuously rated start solenoid as standard
- Fly lead as standard for simple pendant connection
- Optional solenoid cover for weather protection
- 19 Different tank sizes available
- Adjustable lowering valve fitted as standard
- Manual Override standard on single acting packs



Single Acting Circuit



P & T Circuit



Single Acting Unit shown for dimension purposes only

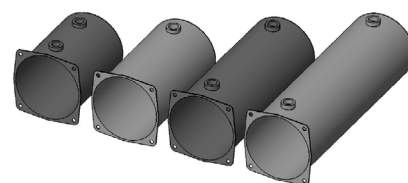
## STANDARD MODELS

Model	Volts	Function	Pump Size	Reservoir Type	Reservoir Cap. (Lt)	List Price
BPT121-01	12	P & T	2.1	No Tank	No Tank	\$668.00
BSA121-01	12	S/A				\$756.00
BPT221-01	24	P & T				\$668.00
BSA221-01	24	S/A				\$756.00
BPT121S8-01	12	P & T	2.1	Steel	8	\$704.00
BSA121S8-01	12	S/A				\$792.00
BPT221S8-01	24	P & T				\$704.00
BSA221S8-01	24	S/A				\$792.00

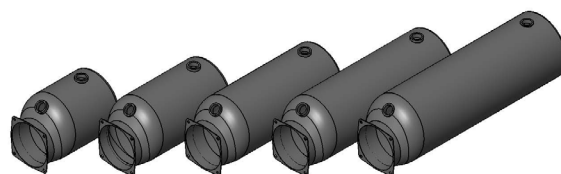
For other reservoir size options use no tank option and add reservoir from following page

## RESERVOIRS

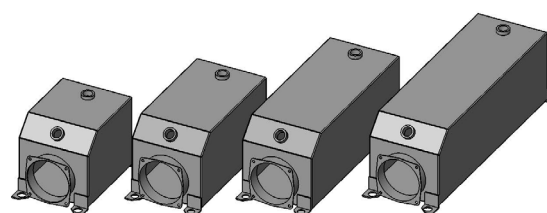
Model	Type	Useable Volume (lt)	Length (mm)	List Price
8080-21-K	Round Steel	1.5	159	\$52.00
8080-2-K	Round Steel	2	213	\$60.00
8080-3-K	Round Steel	3	292	\$60.00
8080-4-K	Round Steel	4	378	\$88.00
8080-5-K	Offset Steel	4	232	\$80.00
8080-6-K	Offset Steel	6	318	\$88.00
8080-8-K	Offset Steel	8	403	\$72.00
8080-10-K	Offset Steel	10	489	\$95.00
8080-12-K	Offset Steel	12	575	\$112.00
8080-8-S-K	Square Steel	8	235	\$120.00
8080-13-K	Square Steel	12	349	\$144.00
8080-16-K	Square Steel	16	470	\$168.00
8080-20-K	Square Steel	20	581	\$192.00
8181-35-K	Square plastic	3	203	\$68.00
8181-5-K	Square plastic	4	267	\$68.00
8181-6-K	Square plastic	6	337	\$68.00
8282-8-K	Square plastic	8	440	\$72.00
8181-14-K	Square plastic	10	632	\$84.00
8282-16-K	Square plastic	14	699	\$80.00



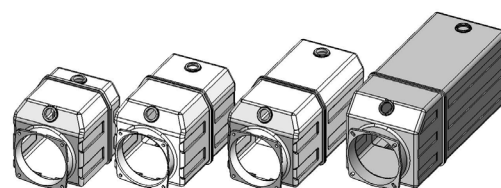
Round Steel



Offset Steel



Square Steel



Square Plastic

## PENDANT OPTIONS

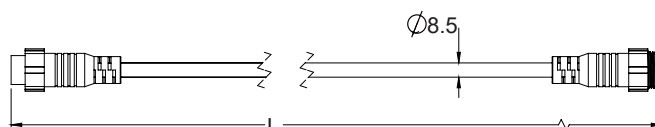
"Plug and play" pendants available with or without battery indicator

Model	Description	List Price
395-55	Two button Pendant	\$34.00
395-55-L	Two button Pendant with LED	\$46.00



Pendant Extensions Cables available in 4.5m and 7.6m lengths

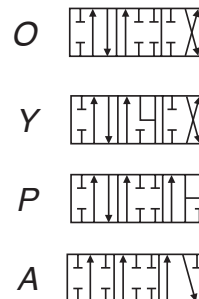
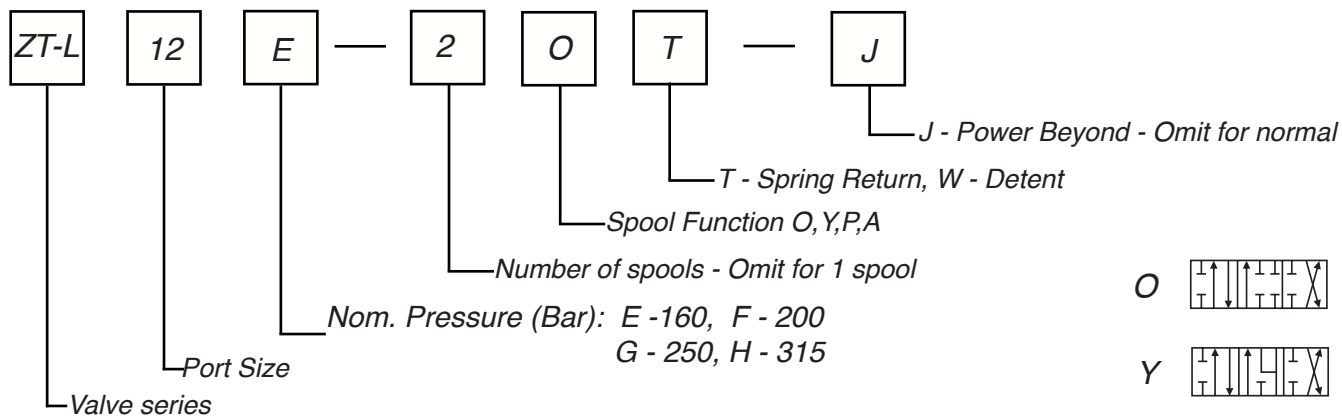
Model	Description	List Price
74-06	4.5m Pendant Extension Cable	\$41.00
74-07	7.6m Pendant Extension Cable	\$60.00



For complete range of power packs contact BOSS Hydraulics



## MODEL CODE



## FEATURES AND BENEFITS

- Internal check valve prevents return of oil
- Adjustable internal relief valve
- "Power Beyond" circuit capabilities
- Control options include manual, pneumatic, hydraulic and solenoid
- Up to 7 spools available

## PRICING

Model	Spool Function	No. Spools	Port Size BSPP	B Side Operator	List Price
ZT-L12G-OT		1			\$134.00
ZT-L12G-2OT	"O" Spool (Cylinder Spool) (All Ports Blocked)	2	1/2"	Spring Return	\$211.00
ZT-L12G-3OT		3			\$288.00
ZT-L12G-4OT		4			\$364.00
ZT-L12G-5OT		5			\$441.00

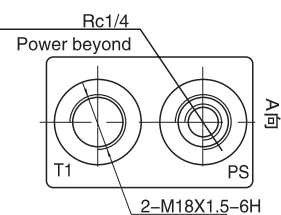
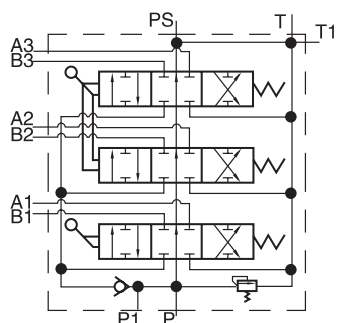
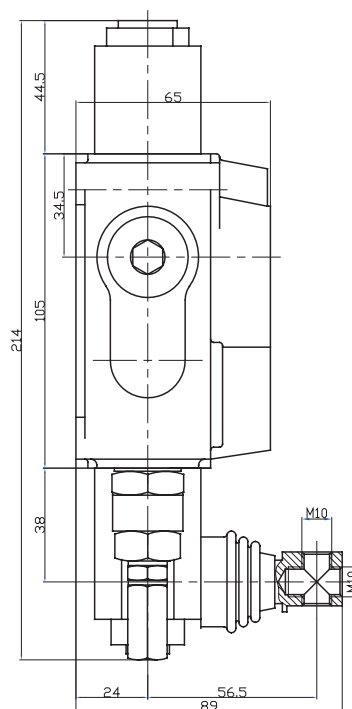
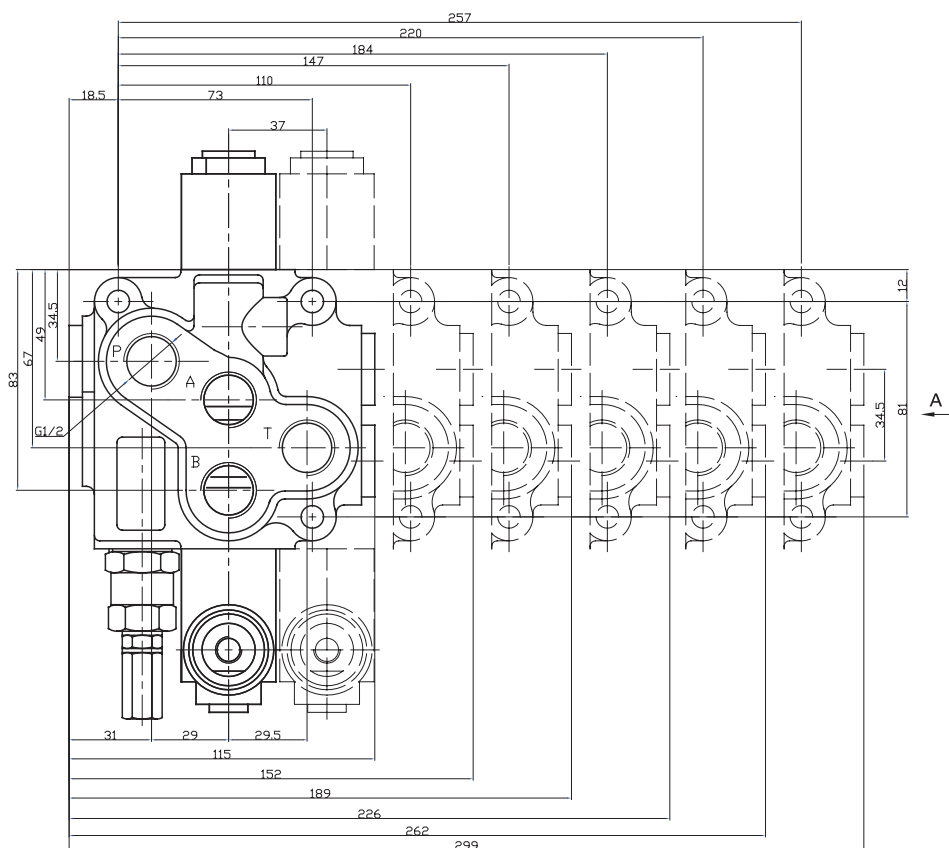
Stocked options include

- Pneumatic kits
- Detent kits
- Y motor spools



## SPECIFICATIONS

Nominal Pressure (Bar)	Max Pressure (Bar)	Nominal Flow (lpm)	Allowable Back Pressure (Mpa)	Hydraulic Oil		
				Temp Range (°C)	Viscosity Range (mm²/s)	Filtrating Accuracy (µm)
160	315	50	<1	-20 to 80	10 to 400	<10





- AG CYLINDERS UP TO 5" -
- HYDRAULIC POWER PACKS -
- MONO BLOCK VALVES 1 - 7 SPOOLS -
- CUSTOMISED DESIGNS -
- HEAVY DUTY 12 AND 24V MOTORS -
- AFTER SALES CUSTOMER SUPPORT -



**SUPERIOR TORQUE AND TENSION SOLUTIONS**

Phone: 1300 731 775  
Int: (61) 7 3277 1775  
Fax: (61) 7 3277 3994  
Email: [sales@titantools.com.au](mailto:sales@titantools.com.au)

4/8 Willingdon Street  
Archerfield  
Queensland, Australia 4108

[www.titantools.com.au](http://www.titantools.com.au)